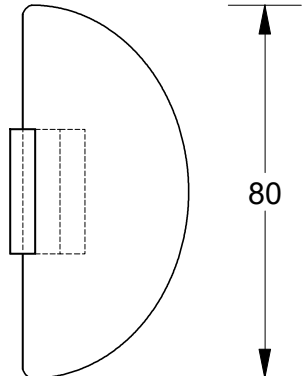


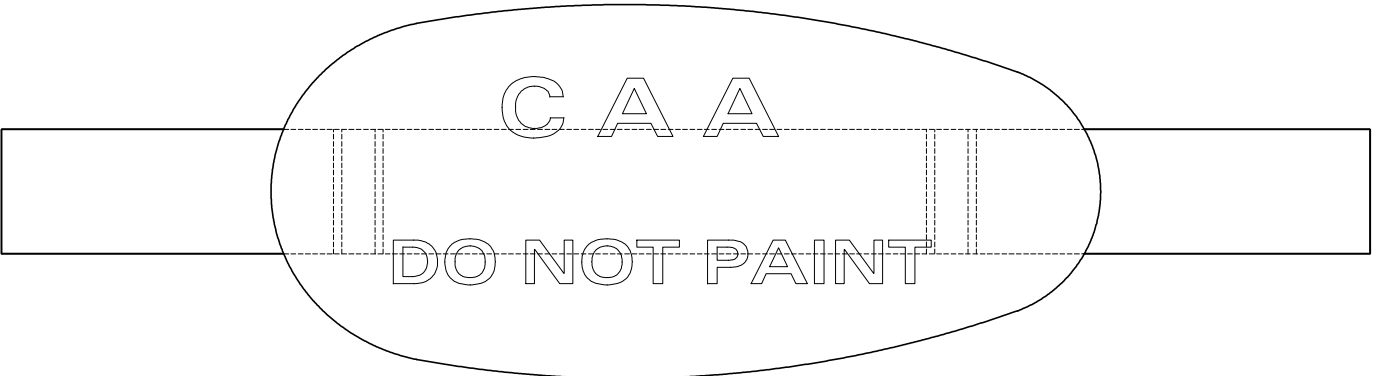
This drawing is the property of Cathodic Anodes Australasia. To be used with permission only.
 This drawing becomes an uncontrolled document once issued as hard or electronic copy.
 Customer to confirm current revision of drawing prior to ordering.

43

330



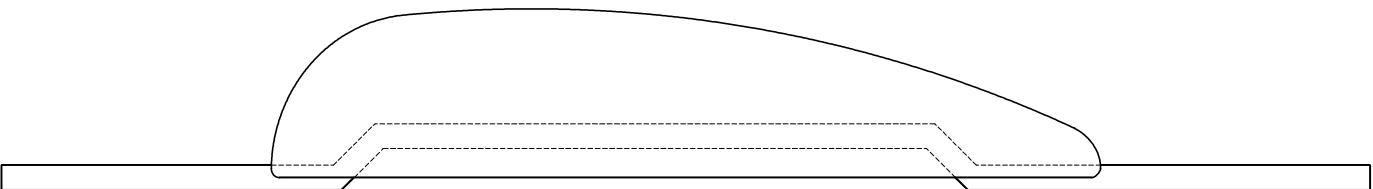
80



32

65 200 65

43



6

INSERT - 32 x 6 ALUMINIUM FLAT

Chemical Composition Limits			Alloy:
Standard: AS2239* (Most current revision)			Z1
Zinc			
Element	min.	max.	
Cadmium	0.025	0.07	
Aluminium	0.10	0.50	
Silicon	-	0.005	
Copper	-	0.005	
Iron	-	0.005	
Lead	-	0.006	
Other Impurities			
- each	-	0.005	
- total	-	0.02	
Zinc	remainder		

* Corresponds to MIL-DTL-18001L alloy composition

- Notes
- Anodes are cast to comply with CAA's standard casting tolerances
 - All sharp edges removed for safe handling
 - Anode insert material to meet relevant Australian/International specifications



Nett Weight Kg (nominal)	Gross Weight Kg (nominal)
2.40	2.50

Rev	Details of Change(s)	Date	Drawn	Verified
1	2019 Catalogue Version	17 NOV 2020	R.N.	R.G.

CAA
Cathodic Anodes Australasia
cathodicanodes.com.au

Product Zinc Anode	
Part no. CDZ3-8 ALS Type 1 2.5 kg	Scale 1 : 1.75
Drawing No: CD2612	Rev 1 Sheet 1 of 1
Drawn by: R Northey Date: 17 NOV 2020	
Mould No: Strap Sample: Custom	

All dimensions are in mm (nominal)

4

3

2

1

4

3

2

1