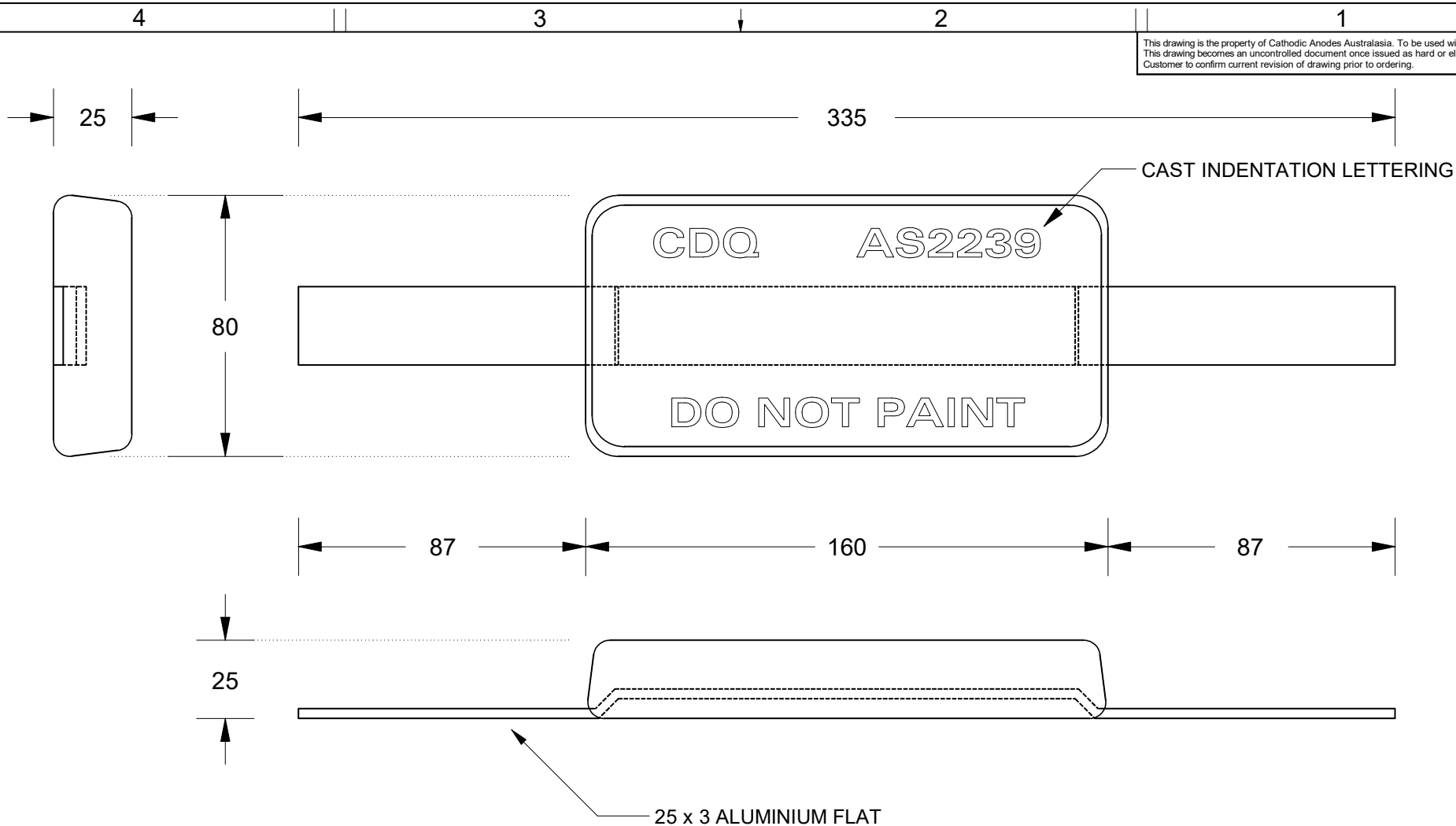


This drawing is the property of Cathodic Anodes Australasia. To be used with permission only. This drawing becomes an uncontrolled document once issued as hard or electronic copy. Customer to confirm current revision of drawing prior to ordering.



Chemical Composition Limits			Alloy:
Standard: AS2239* (Most current revision)			<b>Z1</b>
Zinc			
Element	min.	max.	
Cadmium	0.025	0.07	
Aluminium	0.10	0.50	
Silicon	-	0.005	
Copper	-	0.005	
Iron	-	0.005	
Lead	-	0.006	
Other Impurities			
- each	-	0.005	
- total	-	0.02	
Zinc	remainder		

\* Corresponds to MIL-DTL-18001L alloy composition

Notes

1. Anodes are cast to comply with CAA's standard casting tolerances
2. All sharp edges removed for safe handling
3. Anode insert material to meet relevant Australian/International specifications



25 x 3 ALUMINIUM FLAT

All dimensions are in mm (nominal)

Rev		Details of Change(s)	Date	Drawn	Verified
1		2019 Catalogue Version	17 NOV 20	R.N.	R.G.

Nett Weight Kg (nominal)	Gross Weight Kg (nominal)
<b>1.90</b>	<b>2.00</b>



Cathodic Anodes Australasia

[cathodicanodes.com.au](http://cathodicanodes.com.au)

Product <b>Zinc Anode</b>		Scale <b>1 : 1.75</b>	
Part no. <b>CDZ2-63-1 ALS</b>		Rev <b>1</b>	Sheet <b>1 of 1</b>
Drawing No: <b>CD2609</b>			
Drawn by: R Northey Date: 17 NOV 2020			
Mould No: 60	Strap Sample: 16		