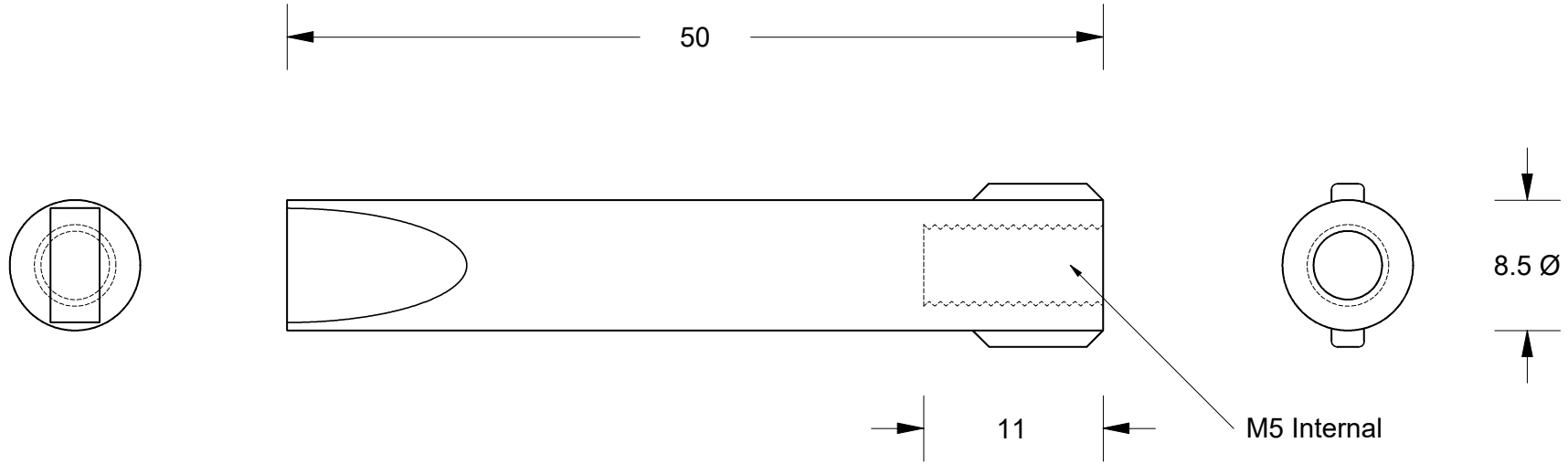


This drawing is the property of Cathodic Anodes Australasia. To be used with permission only.  
 This drawing becomes an uncontrolled document once issued as hard or electronic copy.  
 Customer to confirm current revision of drawing prior to ordering.



### Yamaha 62Y-11325-00

Chemical Composition Limits			Alloy:
Standard: AS2239* (Most current revision)			<b>Z1</b>
Element	min.	max.	
Cadmium	0.025	0.07	
Aluminium	0.10	0.50	
Silicon	-	0.005	
Copper	-	0.005	
Iron	-	0.005	
Lead	-	0.006	
Other Impurities			
- each	-	0.005	
- total	-	0.02	
Zinc		remainder	

\* Corresponds to MIL-DTL-18001L alloy composition

- Notes**
1. Anodes are cast to comply with CAA's standard casting tolerances
  2. All sharp edges removed for safe handling
  3. Anode insert material to meet relevant Australian/International specifications

Rev	Details of Change(s)	Date	Drawn	Verified
1	For Manufacture	11 Aug 2020	R.N.	R.G.

Nett Weight Kg (nominal)	Gross Weight Kg (nominal)
<b>0.020</b>	<b>N/A</b>



Cathodic Anodes Australasia

[cathodicanodes.com.au](http://cathodicanodes.com.au)

Product			
<b>Zinc Anode</b>			
Part no.	Scale		
<b>CDZ9-197</b>	<b>2.5 : 1</b>		
Drawing No:	<b>CD2592</b>	Rev	Sheet
		<b>1</b>	<b>1 of 1</b>
Drawn by: R Northey	Date: 11 AUG 2020		

All dimensions are in mm (nominal)