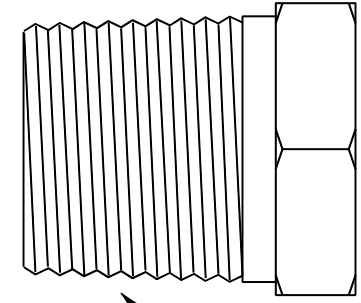
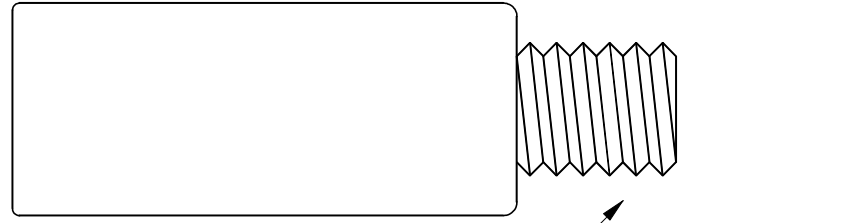


COMBINATION SET - Individual Components Shown At Top - Plug Material: DEZINCIFICATION RESISTANT BRASS

This drawing is the property of Cathodic Anodes Australasia. To be used with permission only. This drawing becomes an uncontrolled document once issued as hard or electronic copy. Customer to confirm current revision of drawing prior to ordering.

Zinc Anode Only - CAA Part No: CDZ9-212 (Drawing No: CD2570)

D.R. Brass Plug 09 (BP09)

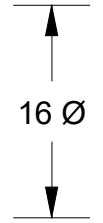


7/16 UNC

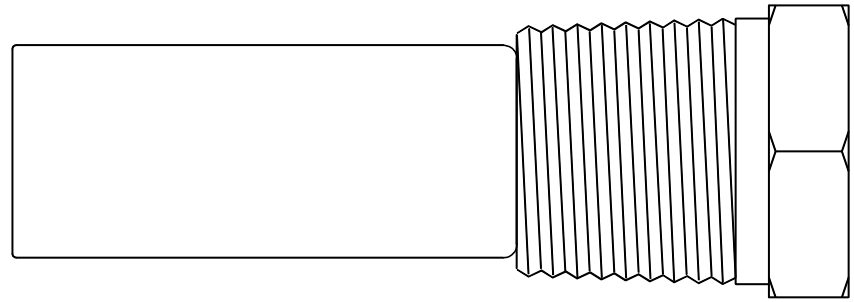
1/2 NPT



63



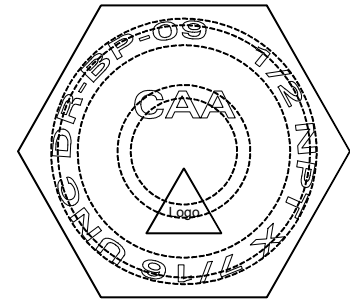
16 Ø



38

19

6



22

NO SHARP EDGES

 = Australian Made Logo

All dimensions are in mm (nominal)

Chemical Composition Limits			Alloy: Z1
Element	min.	max.	
Standard: AS2239* (Most current revision)			
Zinc			
Cadmium	0.025	0.07	
Aluminium	0.10	0.50	
Silicon	-	0.005	
Copper	-	0.005	
Iron	-	0.005	
Lead	-	0.006	
Other Impurities			
- each	-	0.005	
- total	-	0.02	
Zinc		remainder	

* Corresponds to MIL-DTL-18001L alloy composition

- Notes
1. Anodes are cast to comply with CAA's standard casting tolerances
 2. All sharp edges removed for safe handling
 3. Anode insert material to meet relevant Australian/International specifications



Rev	Details of Change(s)	Date	Drawn	Verified
1	For Manufacture	08 JUN 2020	R.N.	R.G.
2	Stamping & Logo added to DR Brass Plug	10 Nov 2020	R.N.	R.G.

Nett Weight Kg (nominal)	Gross Weight Kg (nominal)
0.055	0.115



cathodicanodes.com.au

Product Zinc Anode & DR Brass Plug			
Part no. CDZ9-217		Scale 1.75 : 1	
Drawing No: CD2576		Rev 2	Sheet 1 of 1
Drawn by: R Northey		Date: 10 NOV 2020	
		