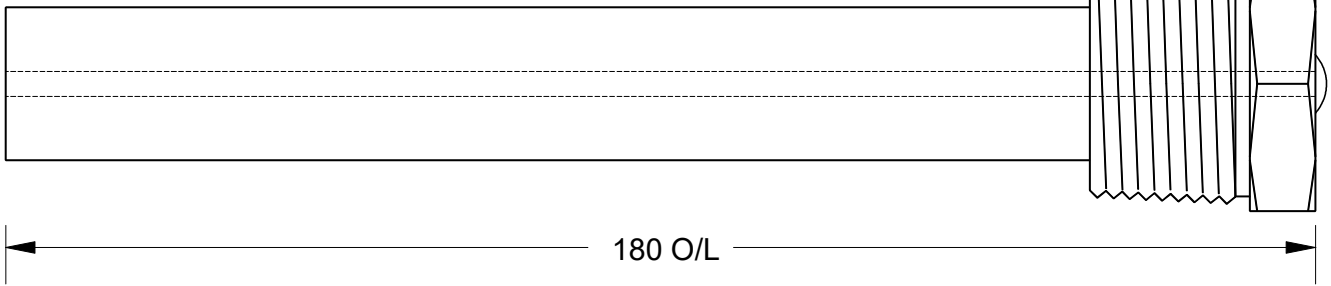


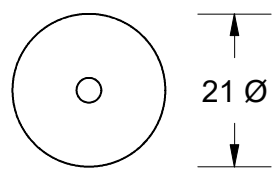
This drawing is the property of Cathodic Anodes Australasia. To be used with permission only.
 This drawing becomes an uncontrolled document once issued as hard or electronic copy.
 Customer to confirm current revision of drawing prior to ordering.

Component View - Scale 1 : 1

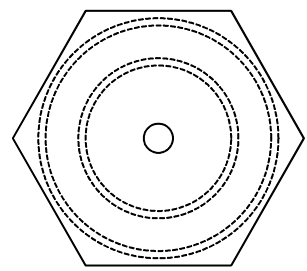
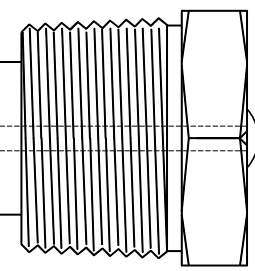
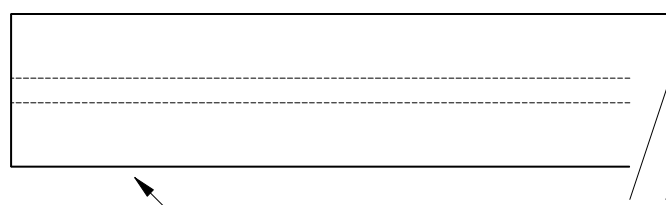


3.4 Ø Mild Steel (Wire) Core - Welded at Cap End

1" BSPT (Stainless Steel) Cap



21 Ø



35
Hex

21 mm Ø Low Potential (AS2239-M2) Magnesium Rod

Chemical Composition Limits			Alloy:
Standard: AS2239 (Most current revision)			M2
Magnesium. Low Potential			
Element	min.	max.	
Aluminium	2.5	3.5	
Zinc	0.7	1.3	
Manganese	0.20	1.5	
Silicon	-	0.05	
Copper	-	0.006	
Iron	-	0.003	
Nickel	-	0.001	
Calcium	-	0.04	
Other Impurities			
- each	-	-	
- total	-	0.30	
Magnesium	remainder		

- Notes
1. Anodes are cast to comply with CAA's standard casting tolerances
 2. All sharp edges removed for safe handling
 3. Anode insert material to meet relevant Australian/International specifications

Rev	Details of Change(s)	Nett Weight		Gross Weight	
		Drawn	Initials	Verified	Initials
1	For Manufacture	10 JUN 19	R.N.	10 JUN 19	L.S.

Nett Weight Kg (nominal)	Gross Weight Kg (nominal)
0.122	0.172



cathodicanodes.com.au

Product	
Magnesium Anode	
Part no.	Scale
CDMR-M2-21-0180-A	NTS
Drawing No: CD2505	Rev Sheet
	1 1 of 1
Drawn by: R Northey Date: 10 JUN 2019	
All dimensions are in mm (nominal)	