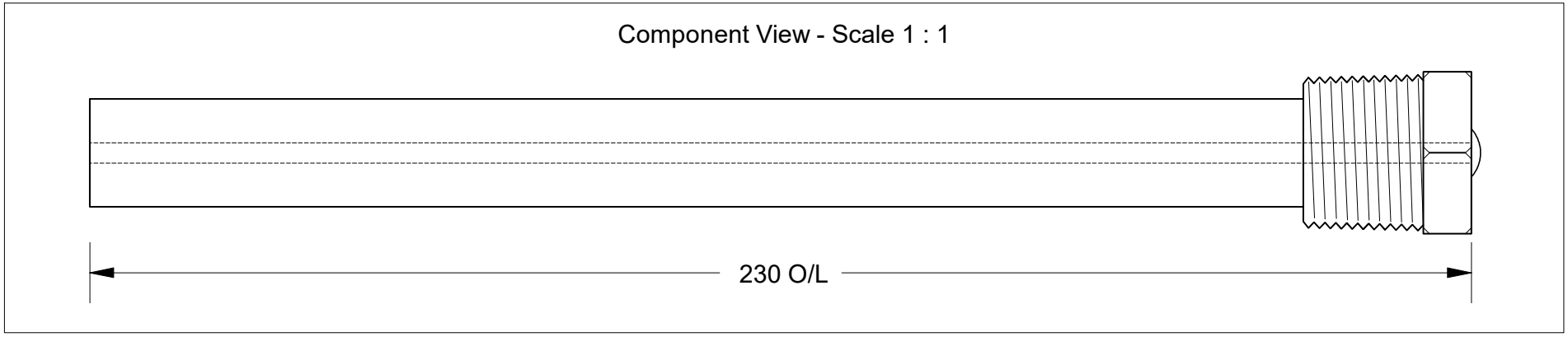


This drawing is the property of Cathodic Anodes Australasia. To be used with permission only. This drawing becomes an uncontrolled document once issued as hard or electronic copy. Customer to confirm current revision of drawing prior to ordering.

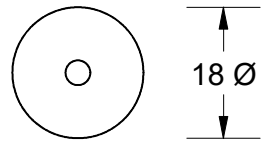
Component View - Scale 1 : 1



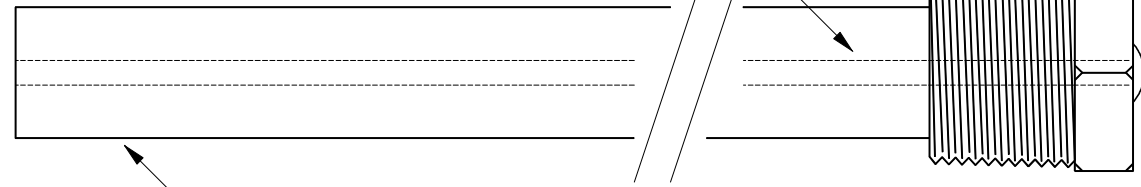
230 O/L

3.4 Ø Mild Steel (Wire) Core - Welded at Cap End

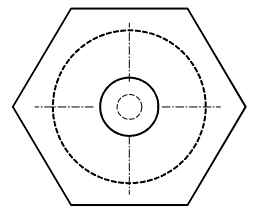
3/4 BSPT (Mild Steel) Cap



18 Ø



18 mm Ø High Potential (M1C) Magnesium Rod



27 Hex

Chemical Composition Limits			Alloy:
Standard: ASTM B843 (Most current revision)			M1C
Magnesium, High Potential			
Element	min.	max.	
Aluminium	-	0.01	
Zinc	-	0.02	
Manganese	0.50	1.3*	
Silicon	-	0.05	
Copper	-	0.02	
Iron	-	0.03	
Nickel	-	0.001	
Calcium	-	0.04	
Other Impurities			
- each	-	0.05	
- total	-	0.30	
Magnesium	remainder		

- Notes
1. Anodes are cast to comply with CAA's standard casting tolerances
 2. All sharp edges removed for safe handling
 3. Anode insert material to meet relevant Australian/International specifications

Rev		Details of Change(s)	Drawn	Initials	Verified	Initials
1		For Manufacture	21 MAY 19	R.N.	21 MAY 19	S.P.

Nett Weight	Gross Weight
Kg (nominal)	Kg (nominal)
0.127	0.177



Cathodic Anodes Australasia

cathodicanodes.com.au

Product		Magnesium Anode	
Part no.	CDMR-M1-18-0230-A	Scale	NTS
Drawing No:	CD2501	Rev	1
Drawn by: R Northey		Date: 21 MAY 2019	Sheet 1 of 1
All dimensions are in mm (nominal)			

