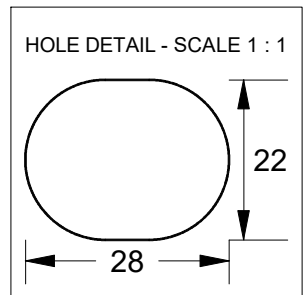
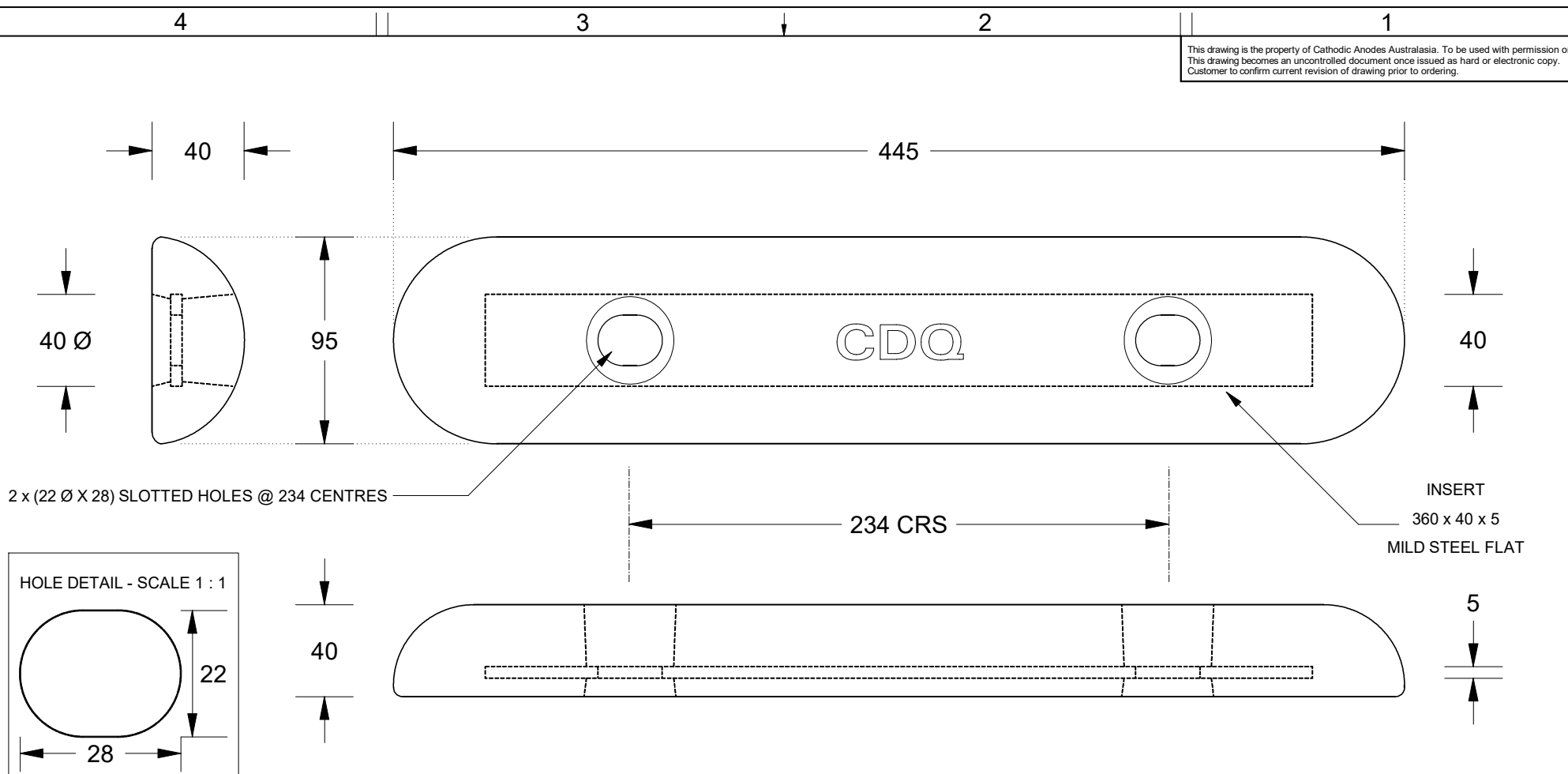


This drawing is the property of Cathodic Anodes Australasia. To be used with permission only.
 This drawing becomes an uncontrolled document once issued as hard or electronic copy.
 Customer to confirm current revision of drawing prior to ordering.



| Alloy Compositions Standard: AS2239 Aluminium <small>(Most current revision)</small> | Alloy: A1 | | Alloy: A6 | |
|--|---------------------|-------|---------------------|-------|
| | Min | Max | Min | Max |
| Zinc | 2.1 | 2.7 | 2.0 | 6.0 |
| Indium | 0.017 | 0.025 | 0.01 | 0.02 |
| Cadmium | 0.008 | 0.012 | — | 0.005 |
| Silicon | — | 0.20 | 0.08 | 0.12 |
| Iron | — | 0.12 | — | 0.12 |
| Magnesium | — | 0.02 | — | 0.02 |
| Titanium | — | 0.02 | — | 0.02 |
| Copper | — | 0.006 | — | 0.006 |
| Tin | — | 0.02 | — | 0.02 |
| Other Impurities | - Each 0.02 | | - Each 0.02 | |
| | - Total 0.05 | | - Total 0.05 | |
| Aluminium | remainder | | remainder | |

- Notes**
- Anodes are cast to comply with CAA's standard casting tolerances
 - All sharp edges removed for safe handling
 - Anode insert material to meet relevant Australian/International specifications



| Nett Weight Kg (nominal) | | Gross Weight Kg (nominal) | | |
|-----------------------------|------------------------|------------------------------|-------|----------|
| 3.00 | | 3.70 | | |
| Rev | Details of Change(s) | Date | Drawn | Verified |
| 1 | 2019 Catalogue Version | 23 APR 19 | R.N. | R.G. |
| | | | | |
| | | | | |

CDQ
CAST INDENTATION LETTERING

CAA
Cathodic Anodes Australasia
cathodicanodes.com.au

| | | | |
|-----------------------------------|--|---|------------------------|
| Product Aluminium Anode | | Scale 1 : 2.5 | |
| Part no. CDA8-18H | | Rev 1 | Sheet 1 of 1 |
| Drawing No: CD2489 | | Drawn by: R Northey Date: 23 APR 2019 Mould No: 99 Strap Sample 34 | |

All dimensions are in mm (nominal)