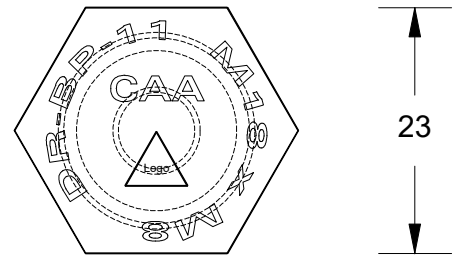
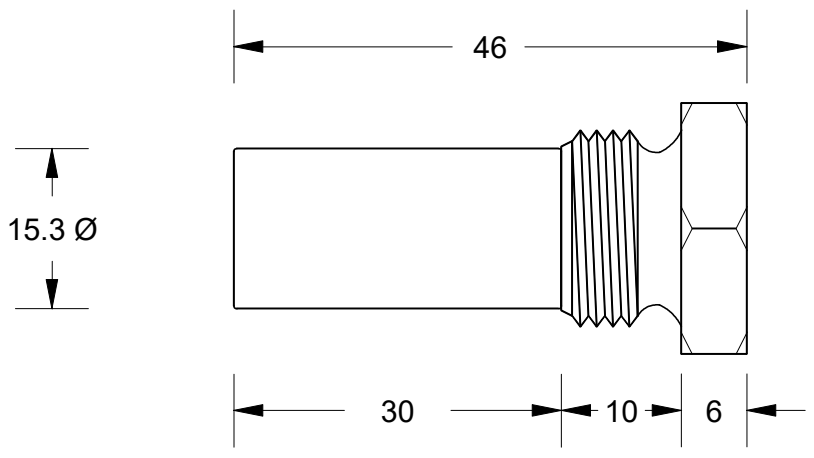
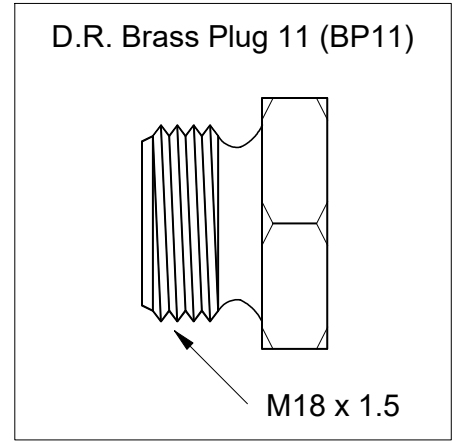
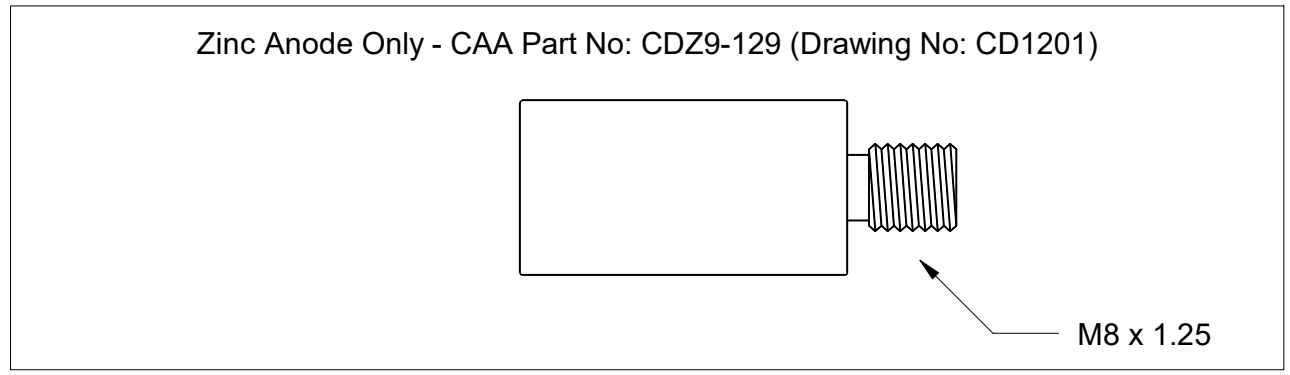


4 3 2 1
COMBINATION SET - Individual Components Shown At Top - Plug Material: DEZINCIFICATION RESISTANT BRASS

This drawing is the property of Cathodic Anodes Australasia. To be used with permission only. This drawing becomes an uncontrolled document once issued as hard or electronic copy. Customer to confirm current revision of drawing prior to ordering.



NO SHARP EDGES

= Australian Made Logo

All dimensions are in mm (nominal)

- Notes**
- Anodes are cast to comply with CAA's standard casting tolerances
 - All sharp edges removed for safe handling
 - Anode insert material to meet relevant Australian/International specifications



Chemical Composition Limits			Alloy:
Standard: AS2239* (Most current revision)			Z1
Element	min.	max.	
Zinc			
Cadmium	0.025	0.07	
Aluminium	0.10	0.50	
Silicon	-	0.005	
Copper	-	0.005	
Iron	-	0.005	
Lead	-	0.006	
Other Impurities			
- each	-	0.005	
- total	-	0.02	
Zinc	remainder		

* Corresponds to MIL-DTL-18001L alloy composition

Rev	Details of Change(s)	Date	Nett Weight		Gross Weight	
			Kg (nominal)		Kg (nominal)	
			0.042		0.076	
1	2013 Catalogue Version (CAA Logo)	24 Apr 2018		R.N.		R.G.
2	Stamping & Logo added to DR Brass Plug	10 Nov 2020		R.N.		R.G.

CAA
 Cathodic Anodes Australasia
 cathodicanodes.com.au

Product			
Zinc Anode & DR Brass Plug			
Part no.	Scale		
CDZ9-201	1.5 : 1		
Drawing No:	Rev	Sheet	
CD2452	2	1 of 1	
Drawn by: R Northey	Date: 10 NOV 2020		