

This drawing is the property of Cathodic Anodes Australasia. To be used with permission only.  
 This drawing becomes an uncontrolled document once issued as hard or electronic copy.  
 Customer to confirm current revision of drawing prior to ordering.

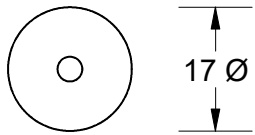
Component View - Scale 1 : 7.5

28 ← → Exposed Length = 28 mm (Nominal)

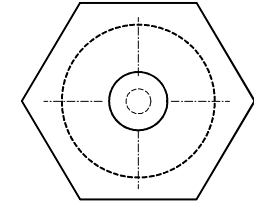
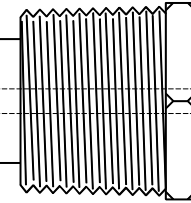
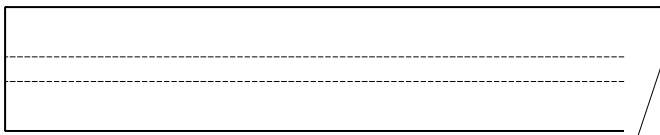
1686 O/L

3.5 Ø (7 x 7) (Galvanised Steel Wire Rope) Core - Welded at Cap End

3/4 BSPT (Mild Steel) Cap



17 Ø



27 Hex

17 mm Ø (AS2239-A5) Aluminium Rod

Notes

1. Anodes are cast to comply with CAA's standard casting tolerances
2. All sharp edges removed for safe handling
3. Anode insert material to meet relevant Australian/International specifications

Chemical Composition Limits		Alloy:	
Standard: AS2239 (Most current revision)		<b>A5</b>	
Aluminium			
Element	min.	max.	
Zinc	4.0	5.0	
Cadmium	-	0.005	
Silicon	-	0.25	
Iron	-	0.25	
Tin	0.05	0.25	
Other Impurities - total	-	0.15	
Aluminium	remainder		

Rev	Details of Change(s)	Nett Weight		Gross Weight	
		kg (nominal)		kg (nominal)	
		<b>1.135</b>		<b>1.185</b>	
1	2013 Catalogue Version	26 APR 18	R.N.	26 APR 18	R.G.
2	Exposed (Steel Core) Length Shown = 28 mm	04 APR 19	R.N.	04 APR 19	L.S.



Cathodic Anodes Australasia

cathodicanodes.com.au

Product			
<b>Aluminium Anode</b>			
Part no.		Scale	
<b>CDAR-A5-17-1686-F5</b>		<b>NTS</b>	
Drawing No: <b>CD2428</b>		Rev	Sheet
		<b>2</b>	<b>1 of 1</b>
Drawn by: R Northey Date: 04 APR 2019			
All dimensions are in mm (nominal)			

