

This drawing is the property of Cathodic Anodes Australasia. To be used with permission only.
 This drawing becomes an uncontrolled document once issued as hard or electronic copy.
 Customer to confirm current revision of drawing prior to ordering.

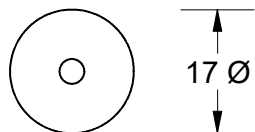
Component View - Scale 1 : 5

Exposed Length = 28 mm (Nominal)

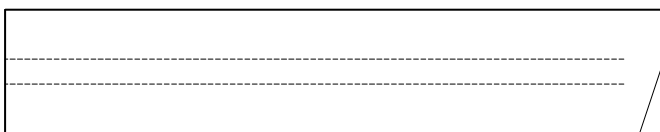
1190 O/L

3.5 Ø (7 x 7) (Galvanised Steel Wire Rope) Core - Welded at Cap End

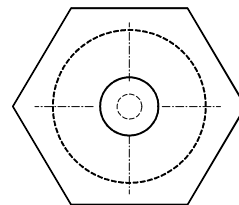
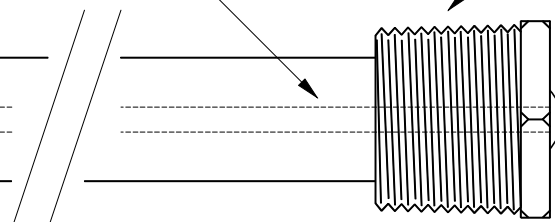
3/4 BSPT (Mild Steel) Cap



17 Ø



17 mm Ø (AS2239-A5) Aluminium Rod



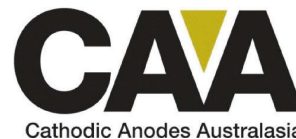
27 Hex

Notes

1. Anodes are cast to comply with CAA's standard casting tolerances
2. All sharp edges removed for safe handling
3. Anode insert material to meet relevant Australian/International specifications

Chemical Composition Limits			Alloy: A5
Standard: AS2239 (Most current revision)			
Element	min.	max.	
Zinc	4.0	5.0	
Cadmium	-	0.005	
Silicon	-	0.25	
Iron	-	0.25	
Tin	0.05	0.25	
Other Impurities - total	-	0.15	
Aluminium	remainder		

Rev	Details of Change(s)	Nett Weight Kg (nominal)		Gross Weight Kg (nominal)	
		Drawn	Initials	Verified	Initials
1	2013 Catalogue Version	26 APR 18	R.N.	26 APR 18	R.G.
2	Exposed (Steel Core) Length Shown = 28 mm	04 APR 19	R.N.	04 APR 19	L.S.



cathodicanodes.com.au

Product Aluminium Anode	
Part no. CDAR-A5-17-1190-F4	Scale N T S
Drawing No: CD2426	Rev Sheet 2 1 of 1
Drawn by: R Northey Date: 04 APR 2019	
All dimensions are in mm (nominal)	

