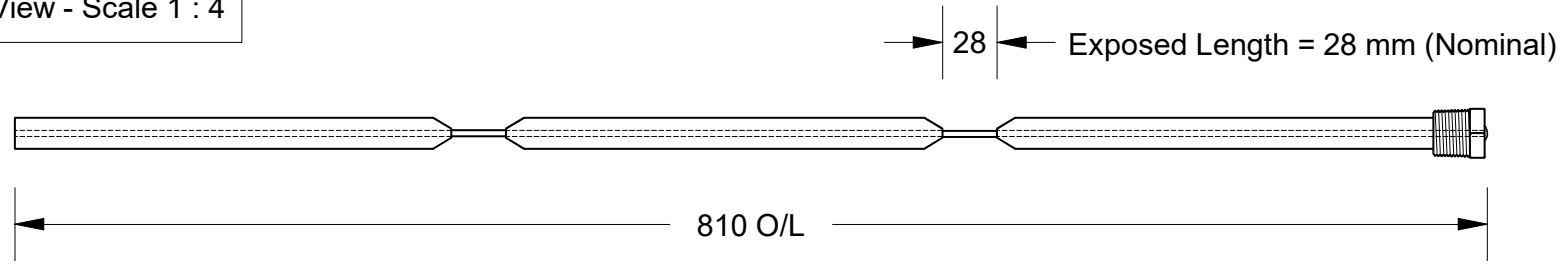


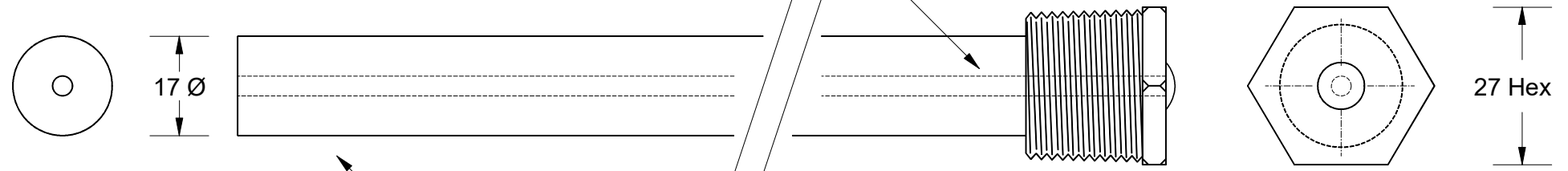
This drawing is the property of Cathodic Anodes Australasia. To be used with permission only. This drawing becomes an uncontrolled document once issued as hard or electronic copy. Customer to confirm current revision of drawing prior to ordering.

Component View - Scale 1 : 4



3.5 Ø (7 x 7) (Galvanised Steel Wire Rope) Core - Welded at Cap End

3/4 BSPT (Mild Steel) Cap



17 mm Ø (AS2239-A5) Aluminium Rod

- Notes
1. Anodes are cast to comply with CAA's standard casting tolerances
 2. All sharp edges removed for safe handling
 3. Anode insert material to meet relevant Australian/International specifications

Chemical Composition Limits		Alloy: A5
Standard: AS2239 (Most current revision)		
Element	min.	max.
Zinc	4.0	5.0
Cadmium	-	0.005
Silicon	-	0.25
Iron	-	0.25
Tin	0.05	0.25
Other Impurities - total	-	0.15
Aluminium	remainder	

Rev	Details of Change(s)	Nett Weight		Gross Weight	
		kg (nominal)		kg (nominal)	
		0.514		0.564	
1	2013 Catalogue Version	24 APR 18	R.N.	24 APR 18	R.G.
2	Exposed (Steel Core) Length Shown = 28 mm	04 APR 19	R.N.	04 APR 19	L.S.

CAA
Cathodic Anodes Australasia

cathodicanodes.com.au

Product		Aluminium Anode	
Part no.	CDAR-A5-17-810-F3	Scale	NTS
Drawing No:	CD2425	Rev	Sheet
		2	1 of 1
Drawn by: R Northey		Date: 04 APR 2019	
All dimensions are in mm (nominal)			