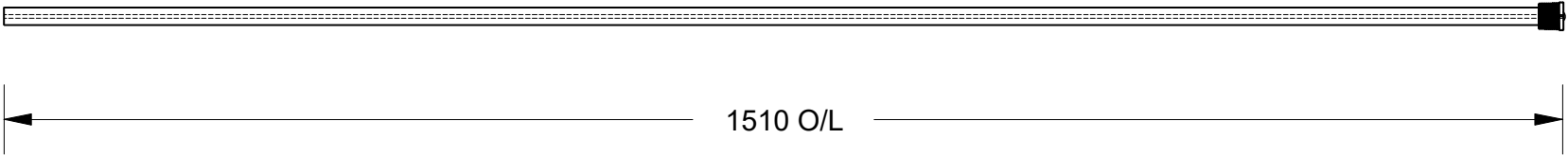


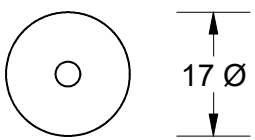
This drawing is the property of Cathodic Anodes Australasia. To be used with permission only.
 This drawing becomes an uncontrolled document once issued as hard or electronic copy.
 Customer to confirm current revision of drawing prior to ordering.

Component View - Scale 1 : 6.75

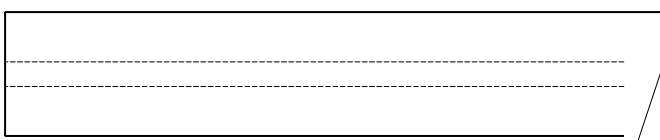


3.4 Ø Mild Steel (Wire) Core - Welded at Cap End

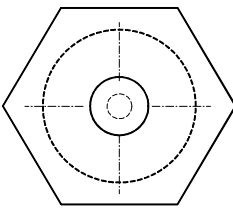
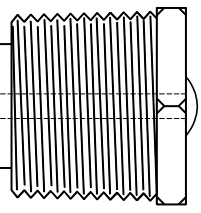
3/4 BSPT (Mild Steel) Cap



17 Ø



17 mm Ø (AS2239-A5) Aluminium Rod



27 Hex

- Notes
1. Anodes are cast to comply with CAA's standard casting tolerances
 2. All sharp edges removed for safe handling
 3. Anode insert material to meet relevant Australian/International specifications

Chemical Composition Limits			Alloy: A5
Standard: AS2239 (Most current revision)			
Element	min.	max.	
Zinc	4.0	5.0	
Cadmium	-	0.005	
Silicon	-	0.25	
Iron	-	0.25	
Tin	0.05	0.25	
Other Impurities			
- total	-	0.15	
Aluminium	remainder		

Rev	Details of Change(s)	Drawn	Initials	Verified	Initials
1	2013 Catalogue Version	08 JAN 18	R.N.	08 JAN 18	R.G.

Nett Weight Kg (nominal)	Gross Weight Kg (nominal)
1.040	0.990

CAA
Cathodic Anodes Australasia

cathodicanodes.com.au

Product Aluminium Anode	
Part no. CDAR-A5-17-1510-A	Scale NTS
Drawing No: CD2423	Rev 1 Sheet 1 of 1
Drawn by: R Northey Date: 08 JAN 2018	
All dimensions are in mm (nominal)	