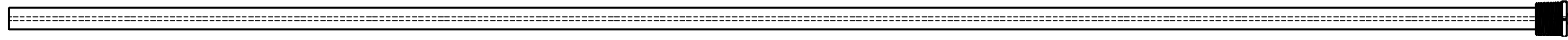


This drawing is the property of Cathodic Anodes Australasia. To be used with permission only. This drawing becomes an uncontrolled document once issued as hard or electronic copy. Customer to confirm current revision of drawing prior to ordering.

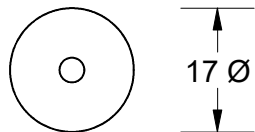
Component View - Scale 1 : 5



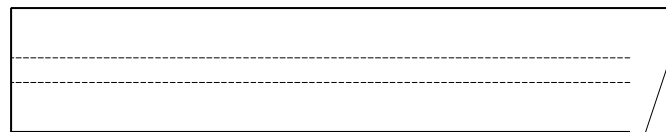
1190 O/L

3.4 Ø Mild Steel (Wire) Core - Welded at Cap End

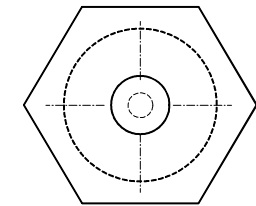
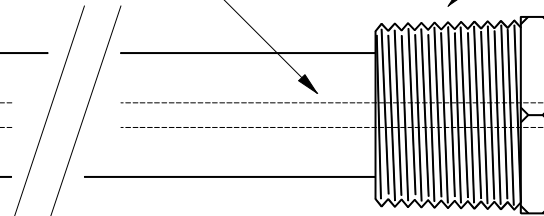
3/4 BSPT (Mild Steel) Cap



17 Ø



17 mm Ø (AS2239-A5) Aluminium Rod



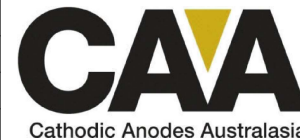
27 Hex

Notes

1. Anodes are cast to comply with CAA's standard casting tolerances
2. All sharp edges removed for safe handling
3. Anode insert material to meet relevant Australian/International specifications

Chemical Composition Limits			Alloy: <b>A5</b>
Standard: AS2239 (Most current revision)			
Element	min.	max.	
Zinc	4.0	5.0	
Cadmium	-	0.005	
Silicon	-	0.25	
Iron	-	0.25	
Tin	0.05	0.25	
Other Impurities - total	-	0.15	
Aluminium	-	remainder	

Rev	Details of Change(s)	Nett Weight		Gross Weight	
		kg (nominal)	kg (nominal)	kg (nominal)	kg (nominal)
		<b>0.832</b>	<b>0.782</b>		
1	2013 Catalogue Version	08 JAN 18	R.N.	08 JAN 18	R.G.



Cathodic Anodes Australasia

cathodicanodes.com.au

Product		<b>Aluminium Anode</b>	
Part no.	<b>CDAR-A5-17-1190-A</b>	Scale	<b>NTS</b>
Drawing No:	<b>CD2422</b>	Rev	Sheet
		<b>1</b>	<b>1 of 1</b>
Drawn by: R Northey	Date: 08 JAN 2018		
All dimensions are in mm (nominal)			