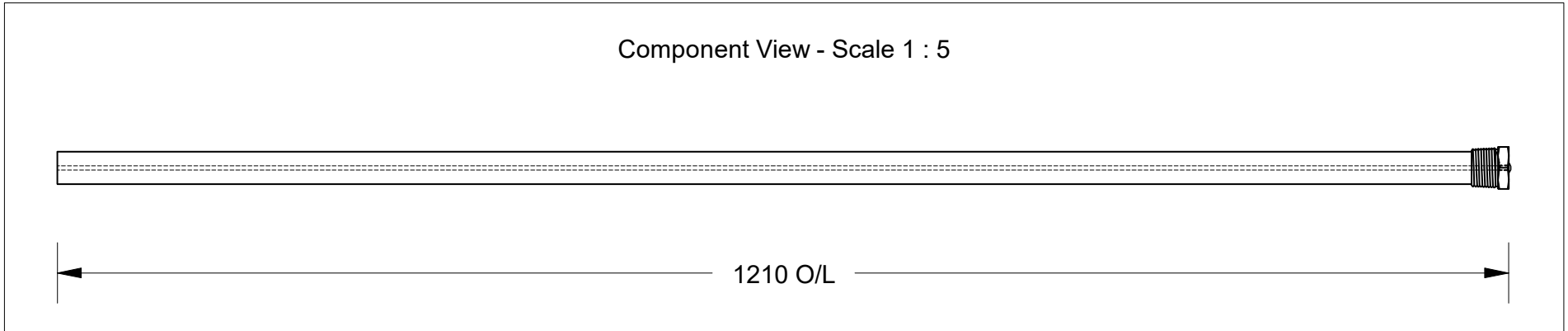


This drawing is the property of Cathodic Anodes Australasia. To be used with permission only.
 This drawing becomes an uncontrolled document once issued as hard or electronic copy.
 Customer to confirm current revision of drawing prior to ordering.

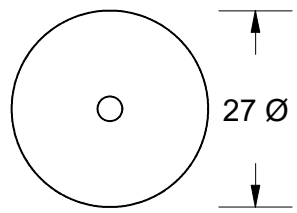
Component View - Scale 1 : 5



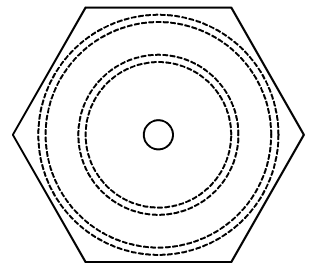
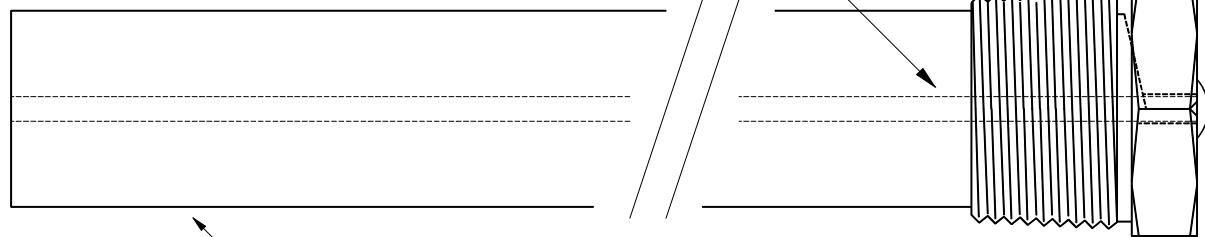
1210 O/L

3.4 Ø Mild Steel (Wire) Core - Welded at Cap End

1" BSPT (Mild Steel) Cap



27 Ø



35 Hex

27 mm Ø Low Potential (AS2239-M2) Magnesium Rod

Chemical Composition Limits		Alloy:
Element	min.	max.
Aluminium	2.5	3.5
Zinc	0.7	1.3
Manganese	0.20	1.5
Silicon	-	0.05
Copper	-	0.006
Iron	-	0.003
Nickel	-	0.001
Calcium	-	0.04
Other Impurities	-	-
- each	-	-
- total	-	0.30
Magnesium	remainder	

Standard: AS2239 (Most current revision)
 Magnesium. Low Potential

M2

- Notes
1. Anodes are cast to comply with CAA's standard casting tolerances
 2. All sharp edges removed for safe handling
 3. Anode insert material to meet relevant Australian/International specifications

Nett Weight	Gross Weight
Kg (nominal)	Kg (nominal)
1.431	1.481



cathodicanodes.com.au

Product	
Magnesium Anode	
Part no.	Scale
CDMR-M2-27-1210-A	NTS
Drawing No: CD2414	Rev Sheet
	1 1 of 1
Drawn by: R Northey Date: 19 DEC 2017	
All dimensions are in mm (nominal)	

Rev	Details of Change(s)	Drawn	Initials	Verified	Initials
1	2013 Catalogue Version	19 DEC 17	R.N.	19 DEC 17	R.G.