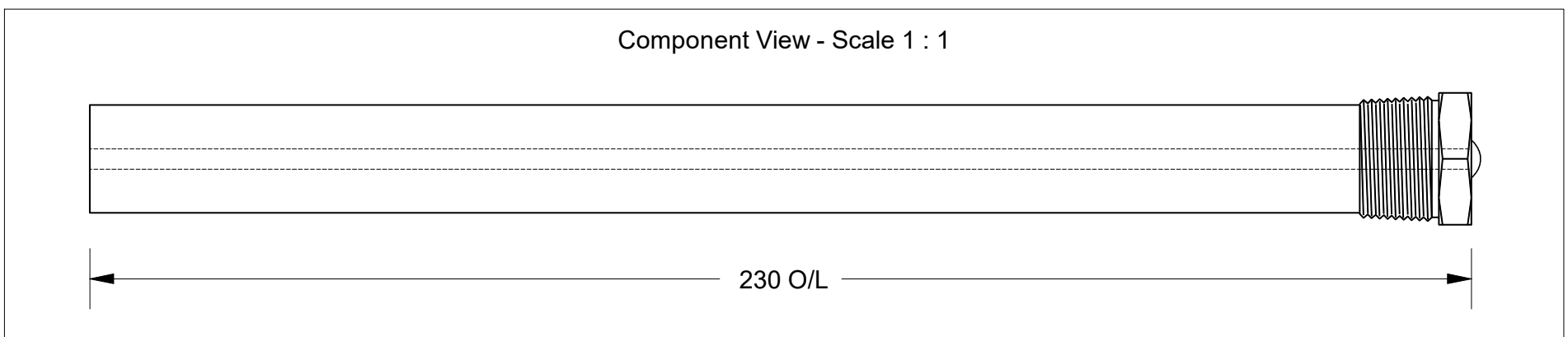


This drawing is the property of Cathodic Anodes Australasia. To be used with permission only. This drawing becomes an uncontrolled document once issued as hard or electronic copy. Customer to confirm current revision of drawing prior to ordering.

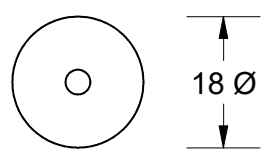
Component View - Scale 1 : 1



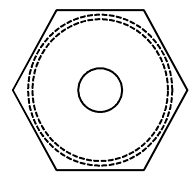
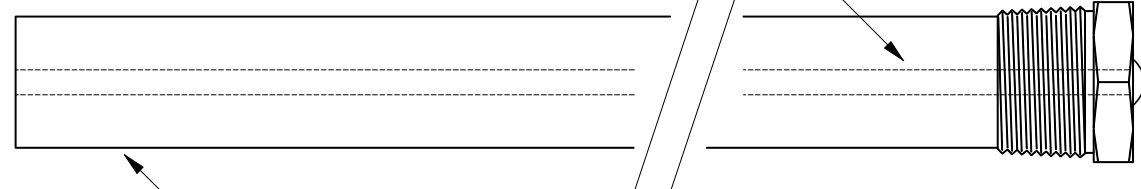
230 O/L

3.4 Ø Mild Steel (Wire) Core - Welded at Cap End

1/2 BSPT (Mild Steel) Cap



18 Ø



22 Hex

18 mm Ø High Potential (M1C) Magnesium Rod

Chemical Composition Limits			Alloy:
Standard: ASTM B843 (Most current revision)			M1C
Magnesium. High Potential			
Element	min.	max.	
Aluminium	-	0.01	
Zinc	-	0.02	
Manganese	0.50	1.3*	
Silicon	-	0.05	
Copper	-	0.02	
Iron	-	0.03	
Nickel	-	0.001	
Calcium	-	0.04	
Other Impurities			
- each	-	0.05	
- total	-	0.30	
Magnesium	remainder		

- Notes
1. Anodes are cast to comply with CAA's standard casting tolerances
 2. All sharp edges removed for safe handling
 3. Anode insert material to meet relevant Australian/International specifications

Rev	Details of Change(s)	Nett Weight		Gross Weight	
		Drawn	Initials	Verified	Initials
		0.127		0.167	
1	2013 Catalogue Version	02 NOV 17	R.N.	02 NOV 17	R.G.

CAA
Cathodic Anodes Australasia
cathodicanodes.com.au

Product		Magnesium Anode	
Part no.	Scale		
CDMR-M1-18-0230-A	NTS		
Drawing No: CD2412	Rev	Sheet	
	1	1 of 1	
Drawn by: R Northey Date: 02 NOV 2017			
All dimensions are in mm (nominal)			