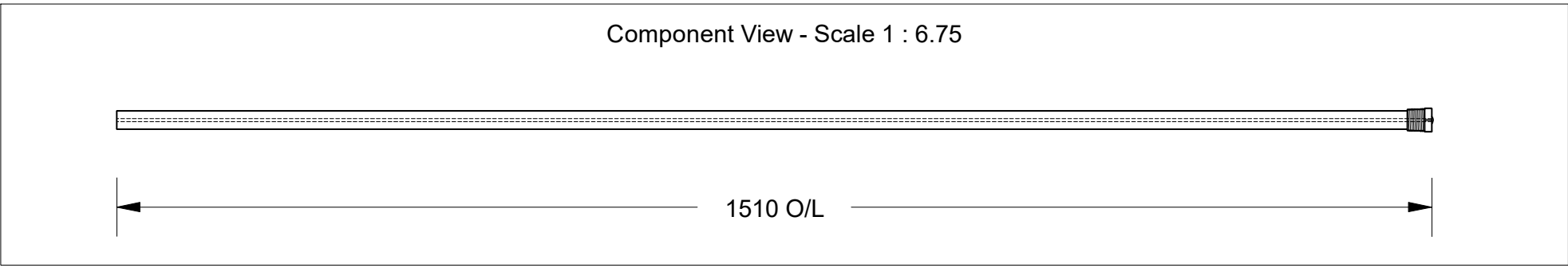


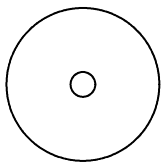
This drawing is the property of Cathodic Anodes Australasia. To be used with permission only.
 This drawing becomes an uncontrolled document once issued as hard or electronic copy.
 Customer to confirm current revision of drawing prior to ordering.

Component View - Scale 1 : 6.75

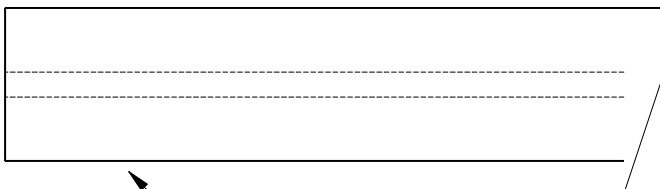


3.4 Ø Mild Steel (Wire) Core - Welded at Cap End

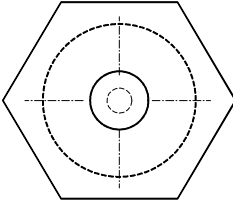
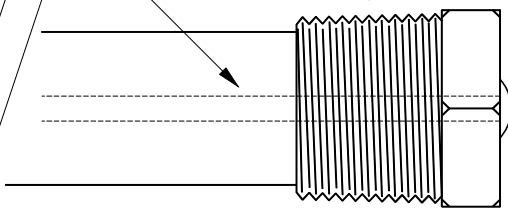
3/4 BSPT (Mild Steel) Cap



21 Ø



21 mm Ø High Potential (M1C) Magnesium Rod



27 Hex

Chemical Composition Limits			Alloy:
Standard: ASTM B843 (Most current revision)			M1C
Magnesium. High Potential			
Element	min.	max.	
Aluminium	-	0.01	
Zinc	-	0.02	
Manganese	0.50	1.3*	
Silicon	-	0.05	
Copper	-	0.02	
Iron	-	0.03	
Nickel	-	0.001	
Calcium	-	0.04	
Other Impurities			
- each	-	0.05	
- total	-	0.30	
Magnesium	remainder		

- Notes
1. Anodes are cast to comply with CAA's standard casting tolerances
 2. All sharp edges removed for safe handling
 3. Anode insert material to meet relevant Australian/International specifications

		Nett Weight Kg (nominal)		Gross Weight Kg (nominal)	
		1.014		1.064	
Rev	Details of Change(s)	Drawn	Initials	Verified	Initials
1	2013 Catalogue Version	01 NOV 17	R.N.	01 NOV 17	R.G.



Cathodic Anodes Australasia

cathodicanodes.com.au

Product			
Magnesium Anode			
Part no.		Scale	
CDMR-M1-21-1510-A		N T S	
Drawing No: CD2410		Rev	Sheet
		1	1 of 1
Drawn by: R Northey Date: 01 NOV 2017			
All dimensions are in mm (nominal)			

