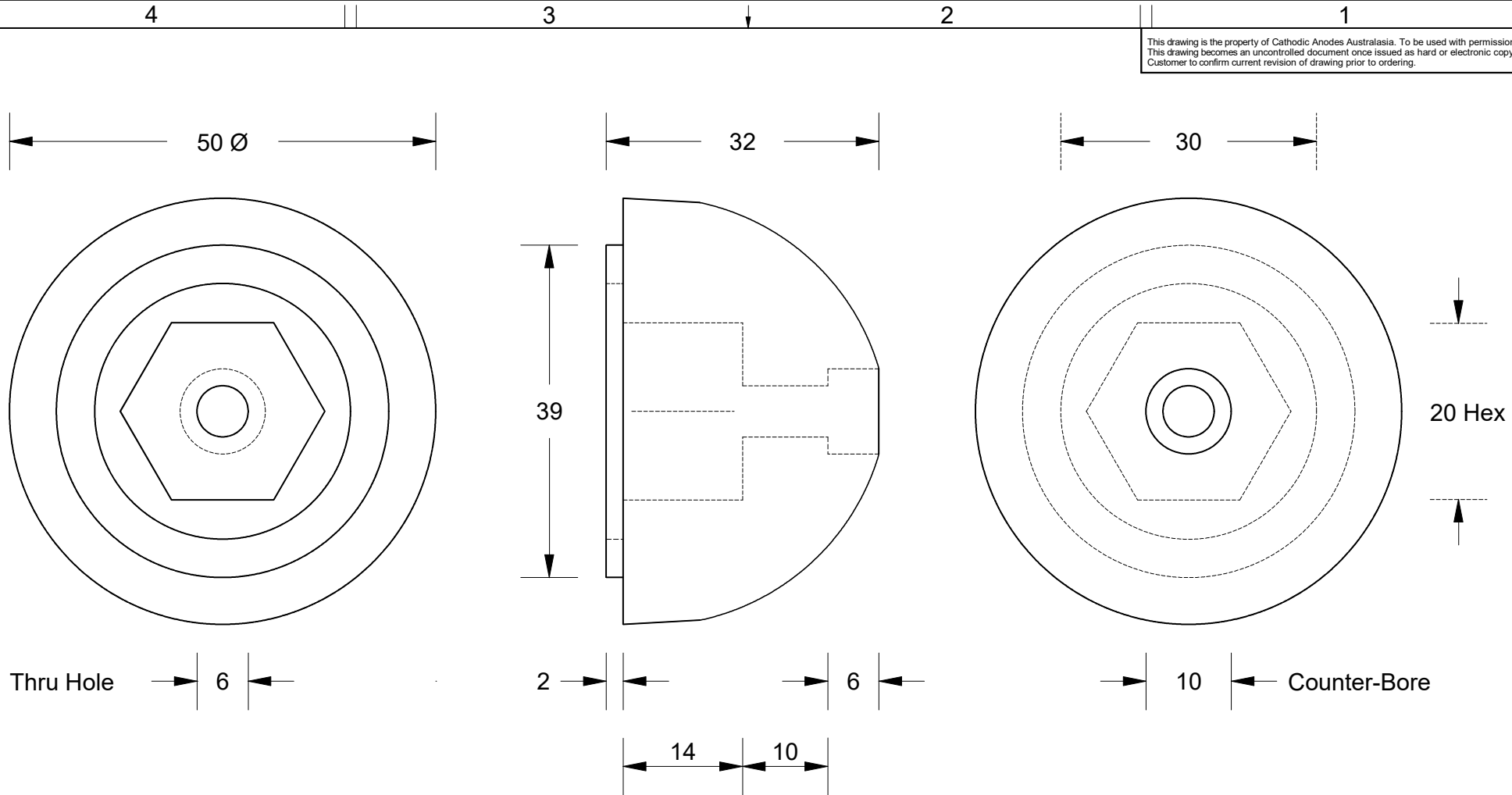


This drawing is the property of Cathodic Anodes Australasia. To be used with permission only.  
 This drawing becomes an uncontrolled document once issued as hard or electronic copy.  
 Customer to confirm current revision of drawing prior to ordering.



Chemical Composition Limits		Alloy:
Element	min.	max.
Standard: AS2239* (Most current revision)		<b>Z1</b>
Zinc		
Cadmium	0.025	0.07
Aluminium	0.10	0.50
Silicon	-	0.005
Copper	-	0.005
Iron	-	0.005
Lead	-	0.006
Other Impurities	-	-
- each	-	0.005
- total	-	0.02
Zinc	remainder	

\* Corresponds to MIL-DTL-18001L alloy composition

**Notes**

1. Anodes are cast to comply with CAA's standard casting tolerances
2. All sharp edges removed for safe handling
3. Anode insert material to meet relevant Australian/International specifications

All dimensions are in mm (nominal)

Rev	Details of Change(s)	Date	Drawn	Verified
1	New Part Addition	19 September 2017	R.N.	R.G.

Nett Weight Kg (nominal)	Gross Weight Kg (nominal)
<b>0.250</b>	<b>0.250</b>



Cathodic Anodes Australasia

[cathodicanodes.com.au](http://cathodicanodes.com.au)

Product	
<b>Zinc Anode</b>	
Part no. <b>CDZ9 - 194</b>	Scale <b>1.5 : 1</b>
Drawing No: <b>CD2404</b>	Rev <b>1</b> Sheet <b>1 of 1</b>
Drawn by: R Northey	Date: 19 SEP 2017
Mould No: N/A	Tooling: N/A

