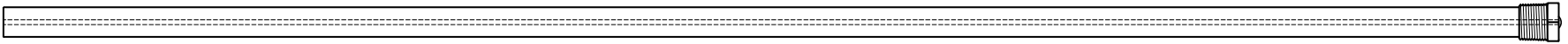


This drawing is the property of Cathodic Anodes Australasia. To be used with permission only.
 This drawing becomes an uncontrolled document once issued as hard or electronic copy.
 Customer to confirm current revision of drawing prior to ordering.

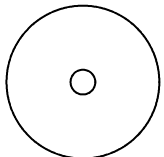
Component View - Scale 1 : 4.5



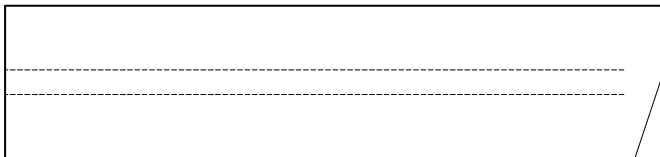
1140 O/L

3.4 Ø Mild Steel (Wire) Core - Welded at Cap End

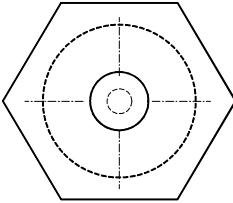
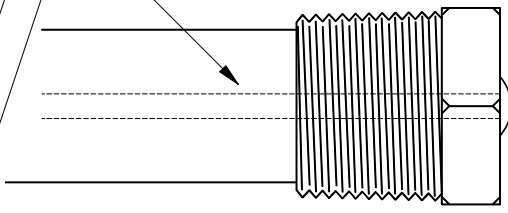
3/4 BSPT (Mild Steel) Cap



21 Ø



21 mm Ø High Potential (ASTM B843-07 - M1C) Magnesium Rod



27 Hex

Chemical Composition Limits			Alloy:
Standard: ASTM B843 (Most current revision)			M1C
Magnesium, High Potential			
Element	min.	max.	
Aluminium	-	0.01	
Zinc	-	0.02	
Manganese	0.50	1.3*	
Silicon	-	0.05	
Copper	-	0.02	
Iron	-	0.03	
Nickel	-	0.001	
Calcium	-	0.04	
Other Impurities			
- each	-	0.05	
- total	-	0.30	
Magnesium	remainder		

- Notes
1. Anodes are cast to comply with CAA's standard casting tolerances
 2. All sharp edges removed for safe handling
 3. Anode insert material to meet relevant Australian/International specifications

Rev	Details of Change(s)	Drawn	Initials	Verified	Initials
1	For Quotation	13 JUN 17	R.N.	13 JUN 17	R.G.

Nett Weight Kg (nominal)	Gross Weight Kg (nominal)
0.741	0.791



Cathodic Anodes Australasia

cathodicanodes.com.au

Product Magnesium Anode	
Part no. CDMR-M1-21-1140-A	Scale NTS
Drawing No: CD2394	Rev 1 Sheet 1 of 1
Drawn by: R Northey Date: 13 JUN 2017	
All dimensions are in mm (nominal)	

