

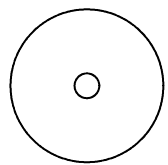
This drawing is the property of Cathodic Anodes Australasia. To be used with permission only. This drawing becomes an uncontrolled document once issued as hard or electronic copy. Customer to confirm current revision of drawing prior to ordering.

Component View - Scale 1 : 7.5

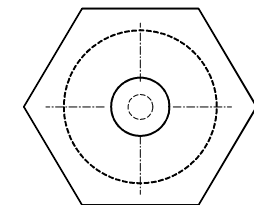
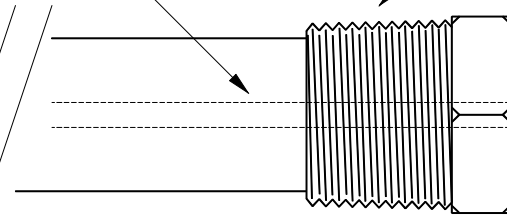
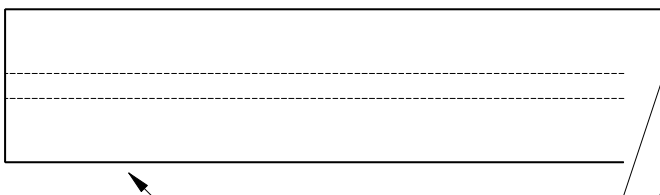


3.5 Ø (7 x 7) (Galvanised Steel Wire Rope) Core - Welded at Cap End

3/4 BSPT (Mild Steel) Cap



21 Ø



27 Hex

21 mm Ø Low Potential (AS2239-M2) Magnesium Rod

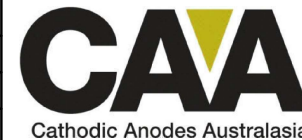
Chemical Composition Limits		Alloy:	
Standard: AS2239 (Most current revision)		M2	
Magnesium, Low Potential			
Element	min.	max.	
Aluminium	2.5	3.5	
Zinc	0.7	1.3	
Manganese	0.20	1.5	
Silicon	-	0.05	
Copper	-	0.006	
Iron	-	0.003	
Nickel	-	0.001	
Calcium	-	0.04	
Other Impurities	-	-	
- each	-	-	
- total	-	0.30	
Magnesium	remainder		

Notes

1. Anodes are cast to comply with CAA's standard casting tolerances
2. All sharp edges removed for safe handling
3. Anode insert material to meet relevant Australian/International specifications

Rev	Details of Change(s)	Nett Weight		Gross Weight	
		Drawn	Initials	Verified	Initials
1	2013 Catalogue Version	09 APR 18	R.N.	09 APR 18	R.G.
2	Exposed (Steel Core) Length Shown = 28 mm	04 APR 19	R.N.	04 APR 19	L.S.

Nett Weight	Gross Weight
Kg (nominal)	Kg (nominal)
<b>0.988</b>	<b>1.038</b>



cathodicanodes.com.au

Product		<b>Magnesium Anode</b>	
Part no.	Scale	NTS	
<b>CDMR-M2-21-1686-F5</b>	Rev	Sheet	
Drawing No: <b>CD2372</b>	<b>2</b>	<b>1 of 1</b>	
Drawn by: R Northey Date: 04 APR 2019			
All dimensions are in mm (nominal)			