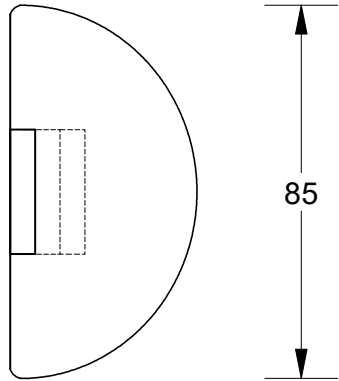


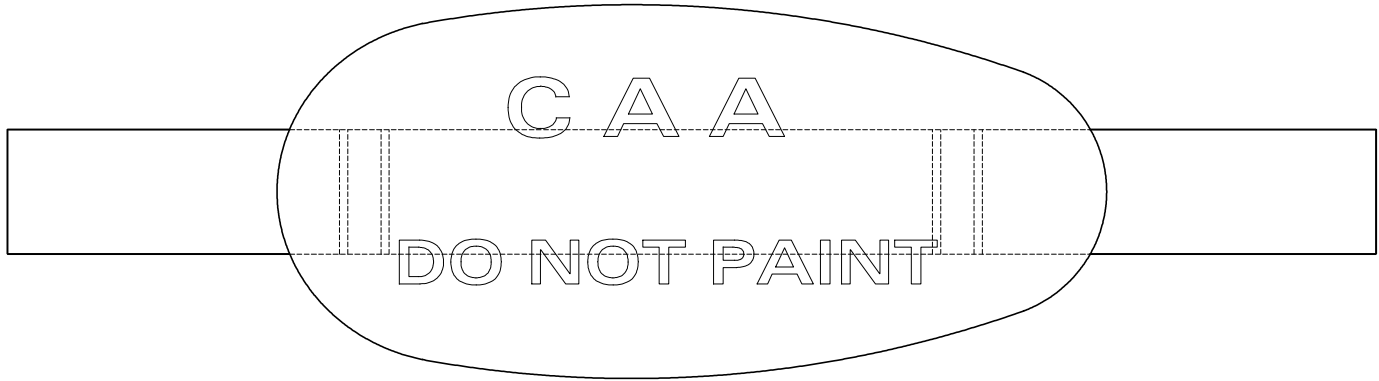
This drawing is the property of Cathodic Anodes Australasia. To be used with permission only. This drawing becomes an uncontrolled document once issued as hard or electronic copy. Customer to confirm current revision of drawing prior to ordering.

45

330



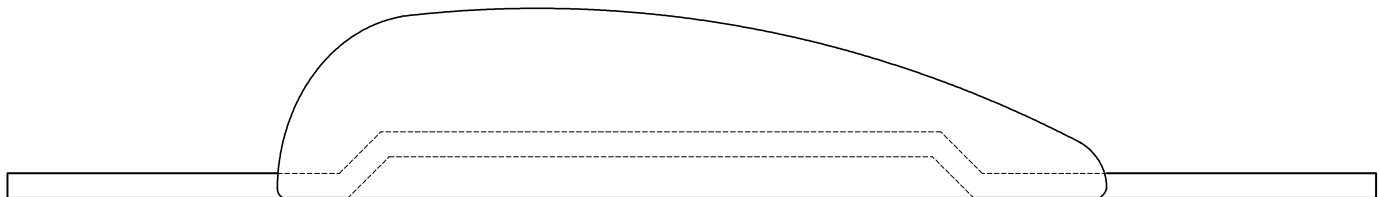
85



32

65 200 65

45



6

INSERT - 32 x 6 Aluminium

Intended Use - for ALUMINIUM Hull Vessels

All dimensions are in mm (nominal)

Chemical Composition Limits			Alloy: Z1
Standard: AS2239* (Most current revision)			
Element	min.	max.	
Zinc			
Cadmium	0.025	0.07	
Aluminium	0.10	0.50	
Silicon	-	0.005	
Copper	-	0.005	
Iron	-	0.005	
Lead	-	0.006	
Other Impurities			
- each	-	0.005	
- total	-	0.02	
Zinc	remainder		

* Corresponds to MIL-DTL-18001L alloy composition

- Notes
1. Anodes are cast to comply with CAA's standard casting tolerances
 2. All sharp edges removed for safe handling
 3. Anode insert material to meet relevant Australian/International specifications



Nett Weight Kg (nominal)		Gross Weight Kg (nominal)		
2.70		3.00		
Rev	Details of Change(s)	Date	Drawn	Verified
1	For Manufacture	24 Feb 2017	R.N.	R.G.

CAA
Cathodic Anodes Australasia
cathodicanodes.com.au

Product Zinc Anode		
Part no. CDZ3-8ALS Type1 3.0 kg	Scale 1 : 1.75	
Drawing No: CD2356	Rev 1	Sheet 1 of 1
Drawn by: R Northey	Date: 24 FEB 2017	
Mould No:	Strap Sample: Custom	

