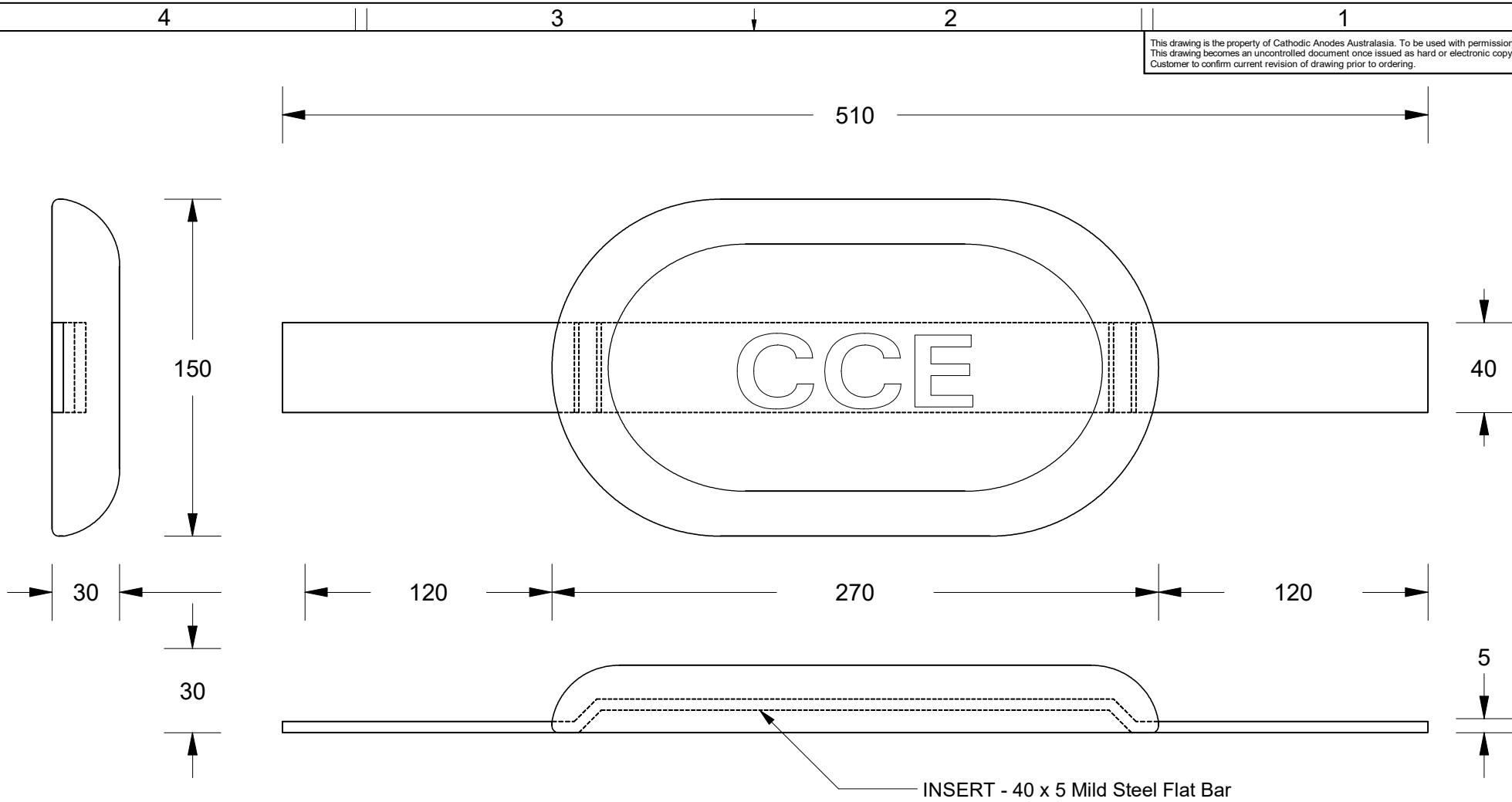


This drawing is the property of Cathodic Anodes Australasia. To be used with permission only. This drawing becomes an uncontrolled document once issued as hard or electronic copy. Customer to confirm current revision of drawing prior to ordering.



Chemical Composition Limits		Alloy:
Standard: AS2239* (Most current revision)		<b>Z1</b>
Element	min.	max.
Cadmium	0.025	0.07
Aluminium	0.10	0.50
Silicon	-	0.005
Copper	-	0.005
Iron	-	0.005
Lead	-	0.006
Other Impurities		
- each	-	0.005
- total	-	0.02
Zinc	remainder	

\* Corresponds to MIL-DTL-18001L alloy composition

- Notes
1. Anodes are cast to comply with CAA's standard casting tolerances
  2. All sharp edges removed for safe handling
  3. Anode insert material to meet relevant Australian/International specifications



Nett Weight Kg (nominal)	Gross Weight Kg (nominal)
<b>6.50</b>	<b>7.30</b>

**CAA**  
Cathodic Anodes Australasia  
cathodicanodes.com.au

Rev	Details of Change(s)	Date	Drawn	Verified
1	For Manufacture	17 February 2017	R.N.	J.L.
2	Strap Sample 63 Added For Recurring Manufacture	21 February 2017	R.N.	J.L.

Product		<b>Zinc Anode</b>	
Part no.	<b>CCE Branded WZ7 Special</b>	Scale	<b>1 : 2.5</b>
Drawing No:	<b>CD2351</b>	Rev	<b>2</b>
Drawn by: R Northey	Date: 21 FEB 2017	Sheet	<b>1 of 1</b>
Mould No: N/A	Strap Sample : 63		

All dimensions are in mm (nominal)