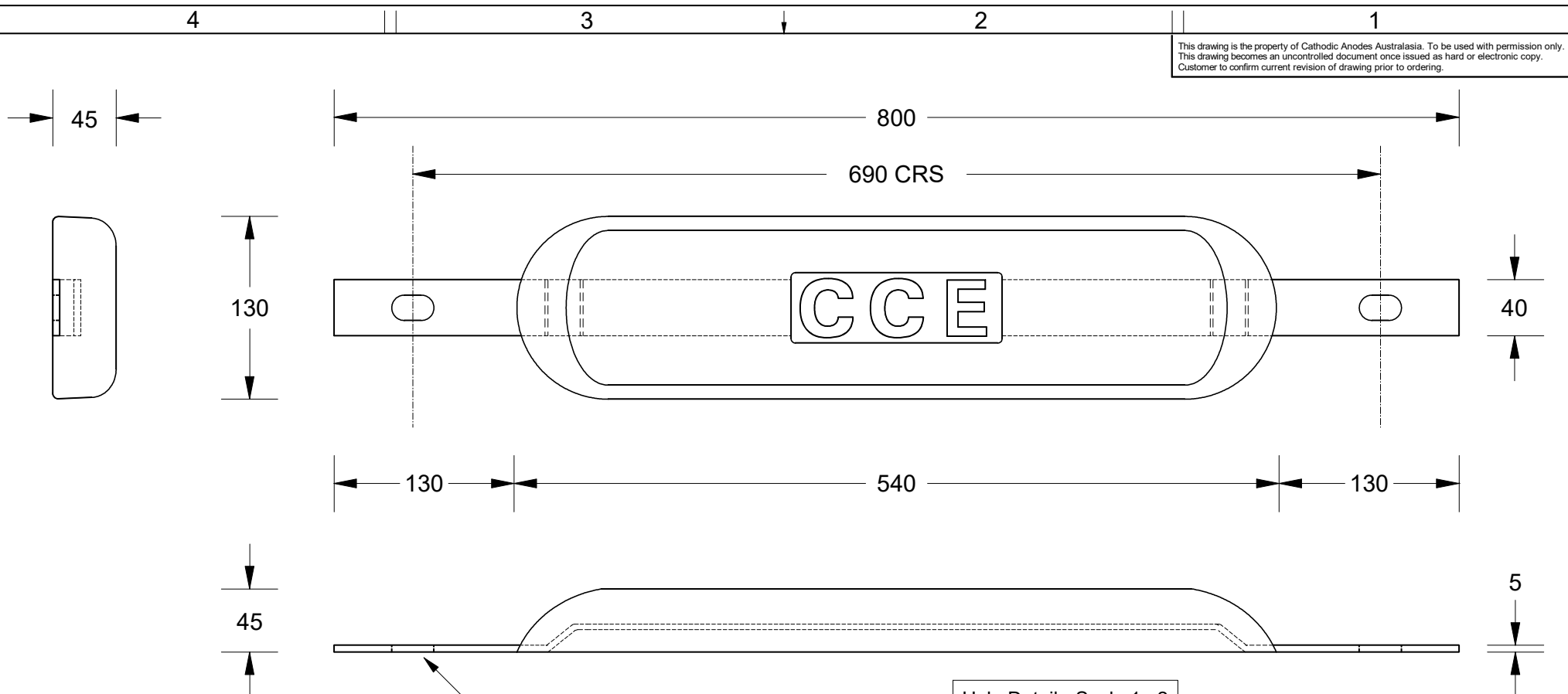


This drawing is the property of Cathodic Anodes Australasia. To be used with permission only. This drawing becomes an uncontrolled document once issued as hard or electronic copy. Customer to confirm current revision of drawing prior to ordering.



Alloy Compositions Standard: AS2239 Aluminium (Most current version)	Alloy: A1		Alloy: A6	
	Min	Max	Min	Max
Zinc	2.1	2.7	2.0	6.0
Indium	0.017	0.025	0.01	0.02
Cadmium	0.008	0.012	—	0.005
Silicon	—	0.20	0.08	0.12
Iron	—	0.12	—	0.12
Magnesium	—	0.02	—	0.02
Titanium	—	0.02	—	0.02
Copper	—	0.006	—	0.006
Tin	—	0.02	—	0.02
Other Impurities	- Each	0.02	- Each	0.02
Aluminium	- Total	0.05 remainder	- Total	0.05 remainder

- Notes
- Anodes are cast to comply with CAA's standard casting tolerances
  - All sharp edges removed for safe handling
  - Anode insert material to meet relevant Australian/International specifications



Rev	Details of Change(s)	Date	Drawn	Verified
1	For Manufacture	15 February 2017	R.N.	J.L.
2	Strap Sample 64 Added For Recurring Manufacture	21 February 2017	R.N.	J.L.
3	Holes Changed to 2 x Slotted Holes	24 January 2018	R.N.	J.L.

Nett Weight Kg (nominal)	Gross Weight Kg (nominal)
<b>6.6</b>	<b>7.8</b>

**CAA**  
Cathodic Anodes Australasia  
cathodicanodes.com.au

Product <b>Aluminium Anode</b>	
Part no. <b>CCE Branded WA8 Special</b>	Scale <b>1 : 4</b>
Drawing No: <b>CD2350</b>	Rev <b>3</b> Sheet <b>1 of 1</b>
Drawn by: R Northey	Date: 24 JAN 2018
Mould No: N/A	Strap Sample: 64

All dimensions are in mm (nominal)

4 3 2 1