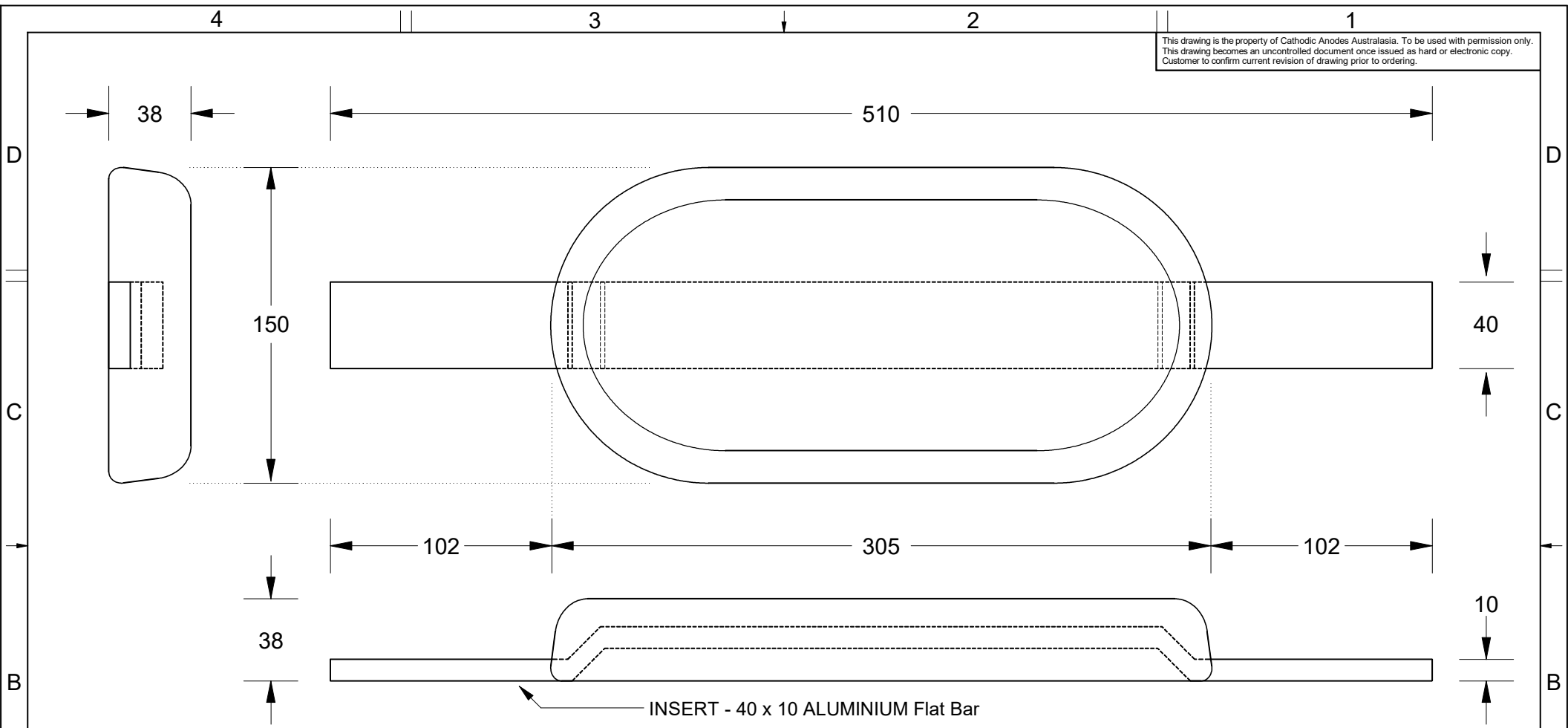


This drawing is the property of Cathodic Anodes Australasia. To be used with permission only. This drawing becomes an uncontrolled document once issued as hard or electronic copy. Customer to confirm current revision of drawing prior to ordering.



INSERT - 40 x 10 ALUMINIUM Flat Bar

**Intended Use - for ALUMINIUM Hull Vessels**

All dimensions are in mm (nominal)

Chemical Composition Limits			Alloy: <b>Z1</b>
Standard: AS2239* (Most current revision)			
Zinc			
Element	min.	max.	
Cadmium	0.025	0.07	
Aluminium	0.10	0.50	
Silicon	-	0.005	
Copper	-	0.005	
Iron	-	0.005	
Lead	-	0.006	
Other Impurities			
- each	-	0.005	
- total	-	0.02	
Zinc	remainder		

\* Corresponds to MIL-DTL-18001L alloy composition

- Notes
1. Anodes are cast to comply with CAA's standard casting tolerances
  2. All sharp edges removed for safe handling
  3. Anode insert material to meet relevant Australian/International specifications



Rev	Details of Change(s)	Date	Drawn	Verified
1	For Manufacture	13 FEB 17	R.N.	R.G.

Nett Weight Kg (nominal)	Gross Weight Kg (nominal)
<b>9.20</b>	<b>9.80</b>

**CAA**  
Cathodic Anodes Australasia  
cathodicanodes.com.au

Product <b>Zinc Anode - c/w ALUMINIUM Insert</b>	
Part no. <b>CDZ8-12-150 ALS</b>	Scale <b>1 : 2.5</b>
Drawing No: <b>CD2342</b>	Rev 1 Sheet 1 of 1
Drawn by: R Northey Date: 13 FEB 2017	
Mould No: 89 Strap Sample 04	

A

A

4

3

2

1