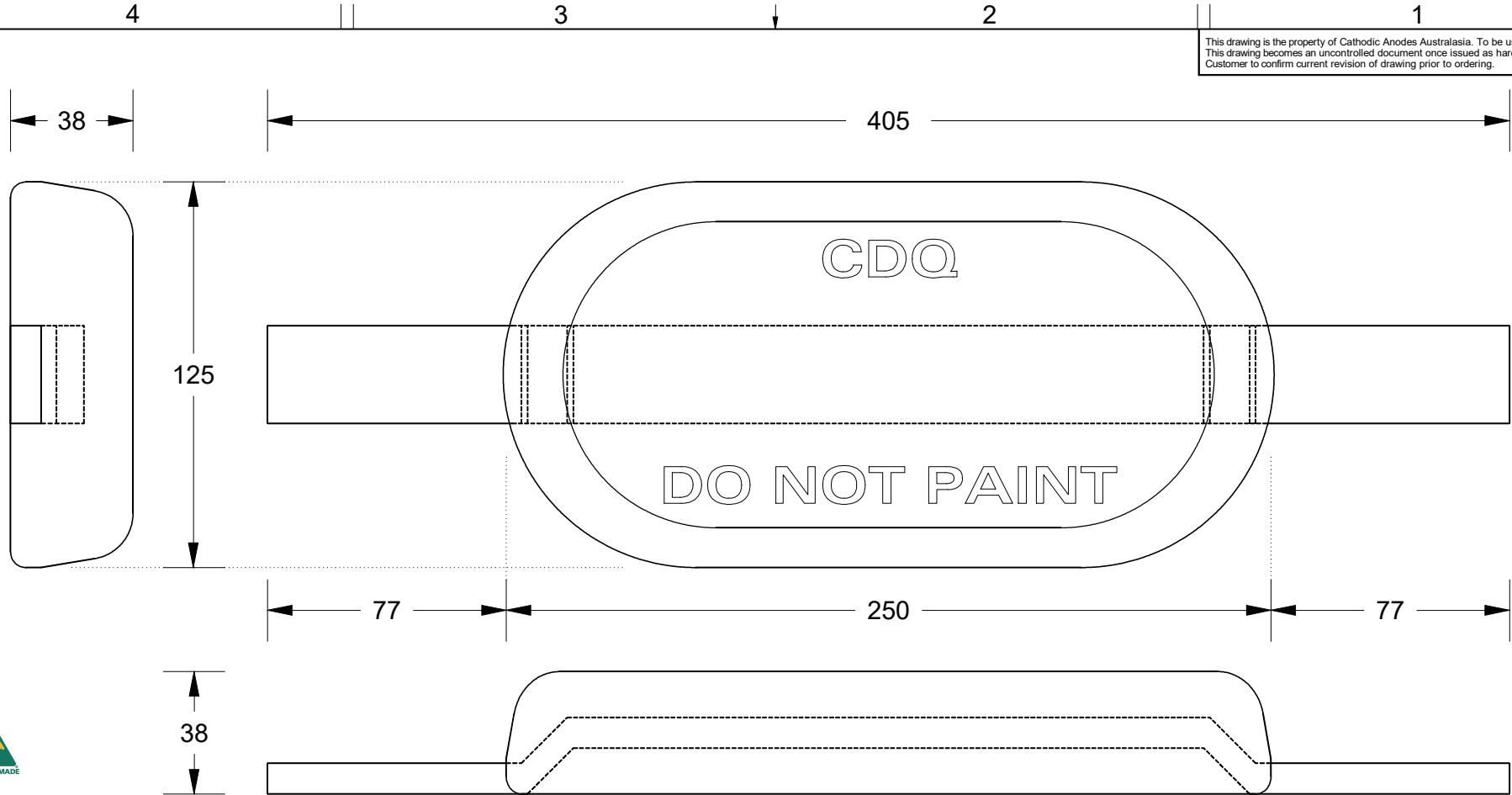


This drawing is the property of Cathodic Anodes Australasia. To be used with permission only. This drawing becomes an uncontrolled document once issued as hard or electronic copy. Customer to confirm current revision of drawing prior to ordering.



- Notes
1. Anodes are cast to comply with CAA's standard casting tolerances
  2. All sharp edges removed for safe handling
  3. Anode insert material to meet relevant Australian/International specifications

**Intended Use - for ALUMINIUM Hull Vessels**

**CDQ**  
CAST INDENTATION LETTERING

All dimensions are in mm (nominal)

Chemical Composition Limits			Alloy:
Standard: AS2239* (Most current revision)			<b>Z1</b>
Element	min.	max.	
Cadmium	0.025	0.07	
Aluminium	0.10	0.50	
Silicon	-	0.005	
Copper	-	0.005	
Iron	-	0.005	
Lead	-	0.006	
Other Impurities			
- each	-	0.005	
- total	-	0.02	
Zinc	remainder		

\* Corresponds to MIL-DTL-18001L alloy composition

Rev	Details of Change(s)	Date	Nett Weight		Gross Weight	
			Kg (nominal)		Kg (nominal)	
			<b>6.50</b>		<b>6.80</b>	
1	For Manufacture	13 FEB 17		R.N.	R.G.	



Cathodic Anodes Australasia

[cathodicanodes.com.au](http://cathodicanodes.com.au)

Product		<b>Zinc Anode - c/w ALUMINIUM Insert</b>	
Part no.	<b>CDZ8-10 ALS</b>	Scale	<b>1 : 2</b>
Drawing No:	<b>CD2341</b>	Rev	<b>1</b>
Drawn by: R Northey	Date: 13 FEB 2017	Sheet	<b>1 of 1</b>
Mould No: 88	Strap Sample 02		