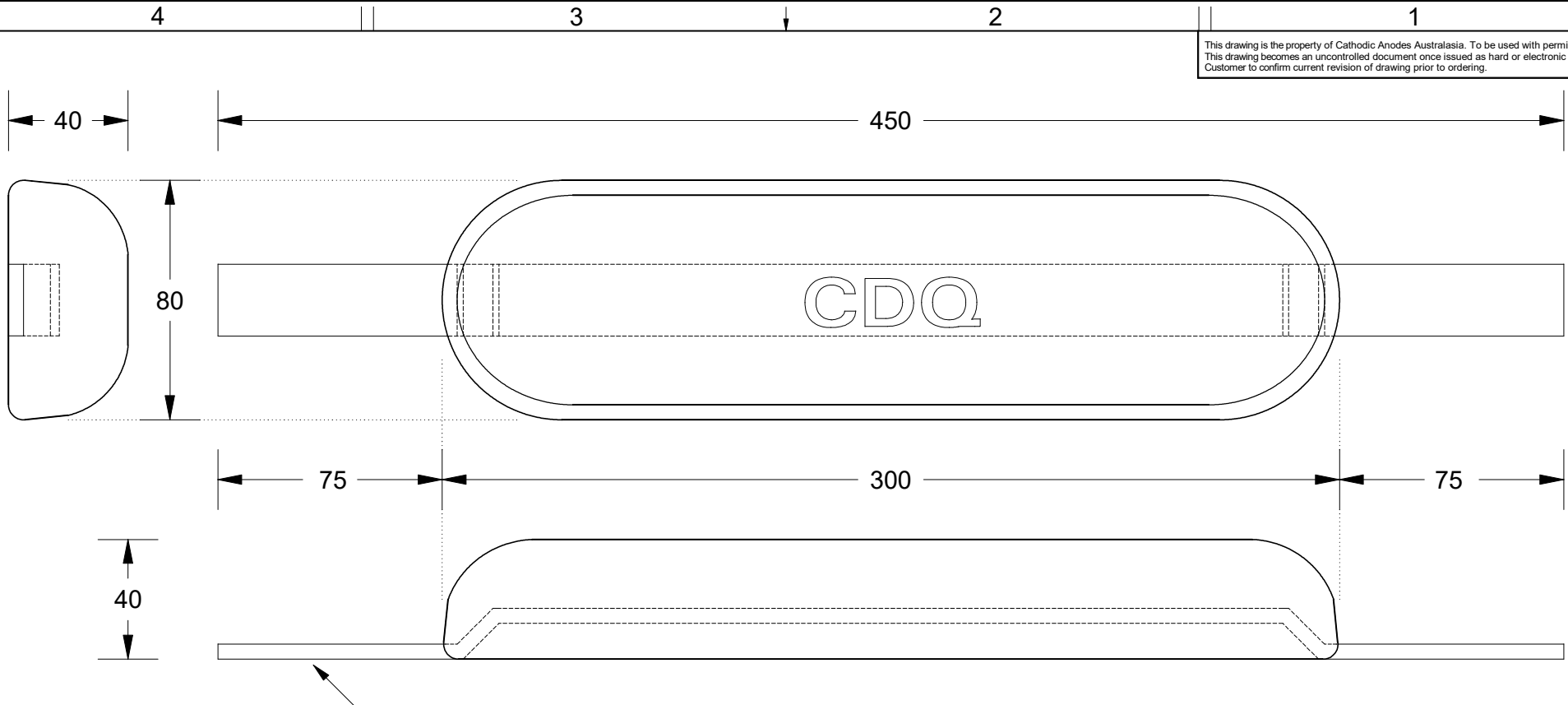


This drawing is the property of Cathodic Anodes Australasia. To be used with permission only. This drawing becomes an uncontrolled document once issued as hard or electronic copy. Customer to confirm current revision of drawing prior to ordering.



Intended Use - for ALUMINIUM Hull Vessels

CDQ
CAST INDENTATION LETTERING

Insert - 25 x 6 - ALUMNIUM Flat Bar

Chemical Composition Limits		Alloy:	
Standard: AS2239* (Most current revision)		Z1	
Element	min.	max.	
Cadmium	0.025	0.07	
Aluminium	0.10	0.50	
Silicon	-	0.005	
Copper	-	0.005	
Iron	-	0.005	
Lead	-	0.006	
Other Impurities			
- each	-	0.005	
- total	-	0.02	
Zinc	remainder		

* Corresponds to MIL-DTL-18001L alloy composition

- Notes**
1. Anodes are cast to comply with CAA's standard casting tolerances
 2. All sharp edges removed for safe handling
 3. Anode insert material to meet relevant Australian/International specifications



Rev	Details of Change(s)	Date	Drawn	Verified
1	For Manufacture	13 JAN 17	R.N.	R.G.

CAA

Cathodic Anodes Australasia

cathodicanodes.com.au

Product		Zinc Anode - c/w ALUMINIUM Insert	
Part no.	CDZ8-123-150 ALS	Scale	1 : 2
Drawing No:	CD2340	Rev	1
		Sheet	1 of 1
Drawn by: R Northey	Date: 13 JAN 2017		
Mould No: 91	Strap Sample 35		

All dimensions are in mm (nominal)