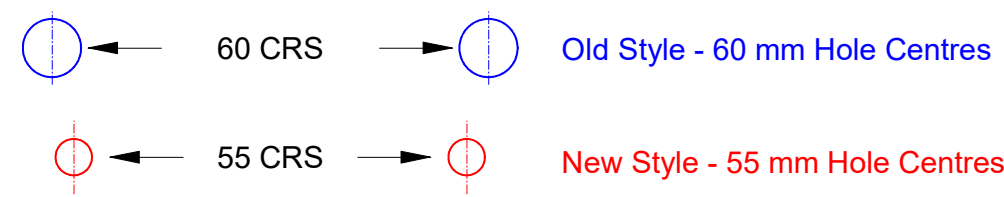
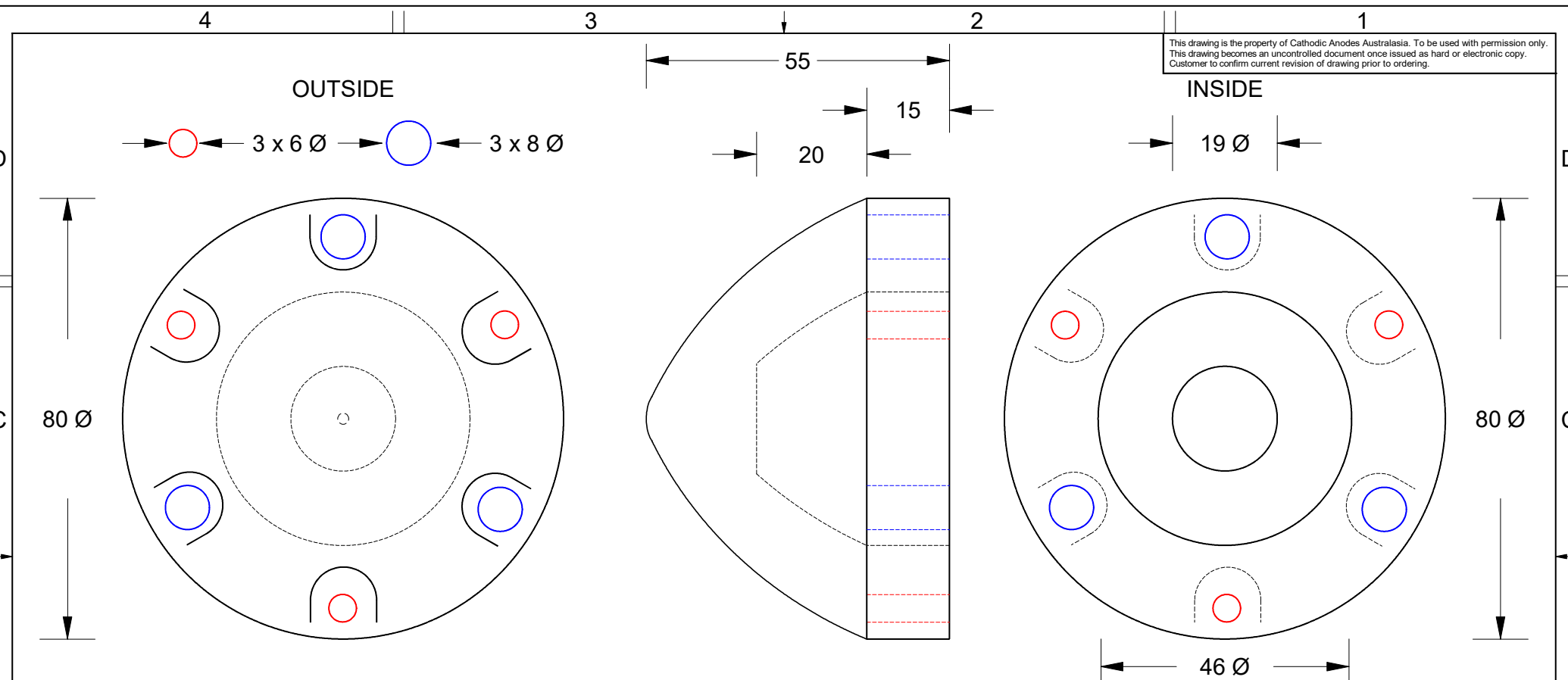


This drawing is the property of Cathodic Anodes Australasia. To be used with permission only. This drawing becomes an uncontrolled document once issued as hard or electronic copy. Customer to confirm current revision of drawing prior to ordering.



Chemical Composition Limits		Alloy:
Standard: AS2239* (Most current Revision)		Z1
Zinc		
Element	min.	max.
Cadmium	0.025	0.07
Aluminium	0.10	0.50
Silicon	-	0.005
Copper	-	0.005
Iron	-	0.005
Lead	-	0.006
Other Impurities		
- each	-	0.005
- total	-	0.02
Zinc	remainder	

- Notes
1. Anodes are cast to comply with CAA's standard casting tolerances
 2. All sharp edges removed for safe handling
 3. Anode insert material to meet relevant Australian/International specifications

Rev	Details of Change(s)	Date	Drawn	Verified
1	2013 Catalogue Version (CAA Logo)	25 August 2016	R.N.	R.G.

Nett Weight	Gross Weight
Kg (nominal)	Kg (nominal)
0.900	0.900

CAA
Cathodic Anodes Australasia
cathodicanodes.com.au

Product	
Zinc Anode	
Part no.	Scale
CDZPN-83 U	1 : 1
Drawing No: CD2313	Rev Sheet
	1 1 of 1
Drawn by: R Northey	Date: 25 AUG 2016

All dimensions are in mm (nominal)

* Corresponds to MIL-DTL-18001L alloy composition