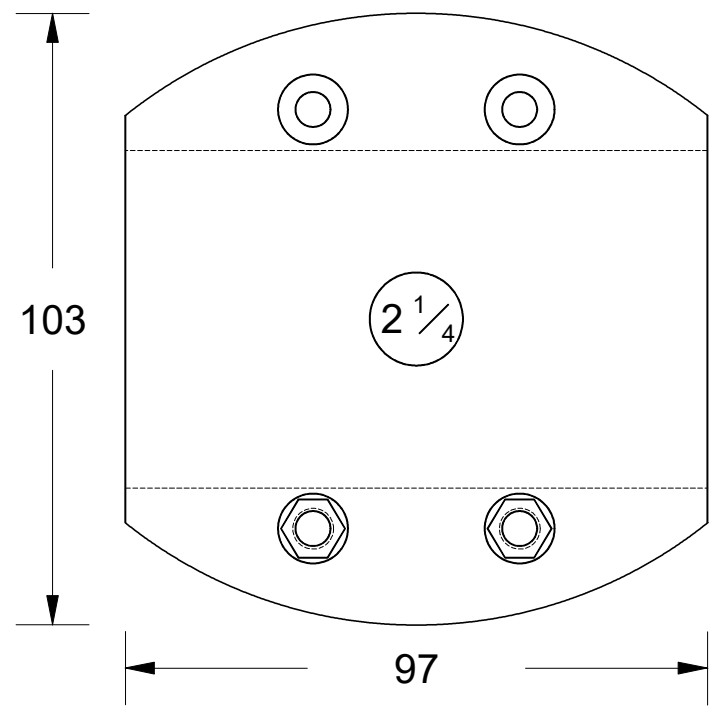
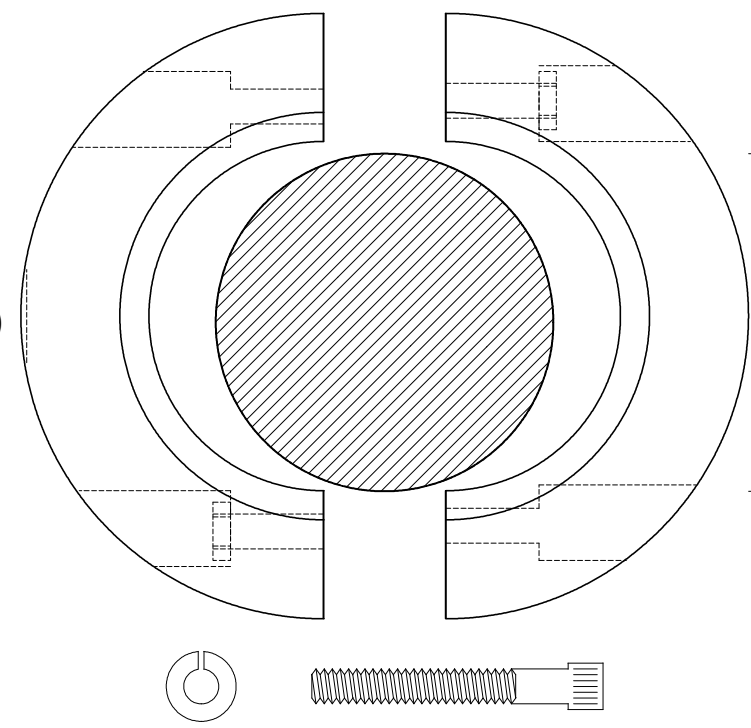


This drawing is the property of Cathodic Anodes Australasia. To be used with permission only.
 This drawing becomes an uncontrolled document once issued as hard or electronic copy.
 Customer to confirm current revision of drawing prior to ordering.

4 x S/S Socket Head Cap Screws & Spring Washers (Supplied)



57.15 Ø (2-1/4")



INTENDED USE FOR 2-1/4" IMPERIAL SHAFTS

Chemical Composition Limits			Alloy:
Standard: AS2239* (Most current revision)			Z1
Zinc			
Element	min.	max.	
Cadmium	0.025	0.07	
Aluminium	0.10	0.50	
Silicon	-	0.005	
Copper	-	0.005	
Iron	-	0.005	
Lead	-	0.006	
Other Impurities			
- each	-	0.005	
- total	-	0.02	
Zinc	remainder		

- Notes
1. Anodes are cast to comply with CAA's standard casting tolerances
 2. All sharp edges removed for safe handling
 3. Anode insert material to meet relevant Australian/International specifications

All dimensions are in mm (nominal)

Rev	Details of Change(s)	Date	Nett Weight		Gross Weight	
			Kg (nominal)		Kg (nominal)	
			2.75		2.80	
1	Introduced July 2016	13 July 2016			<i>R.N.</i>	<i>R.G.</i>

CAA
 Cathodic Anodes Australasia
 cathodicanodes.com.au

Product			
Zinc Anode - Shaft Anode			
Part no.	Scale		
CDZ4 - 225 LD	1 : 1.25		
Drawing No:	CD2284	Rev	Sheet
		1	1 of 1
Drawn by: R Northey	Date: 13 JUL 2016		

* Corresponds to MIL-DTL-18001L alloy composition