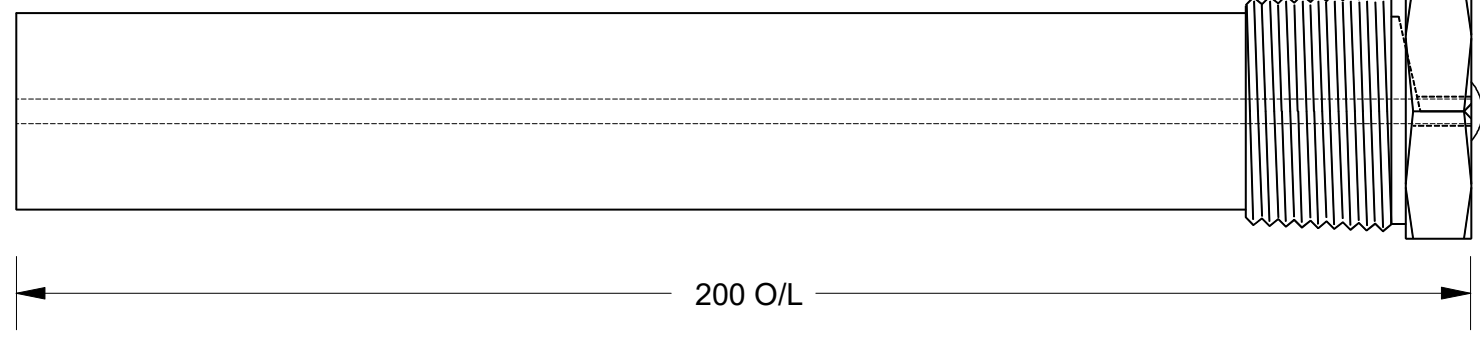


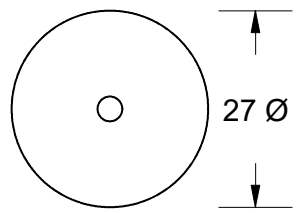
This drawing is the property of Cathodic Anodes Australasia. To be used with permission only. This drawing becomes an uncontrolled document once issued as hard or electronic copy. Customer to confirm current revision of drawing prior to ordering.

Component View - Scale 1 : 1

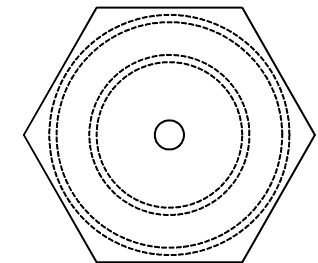
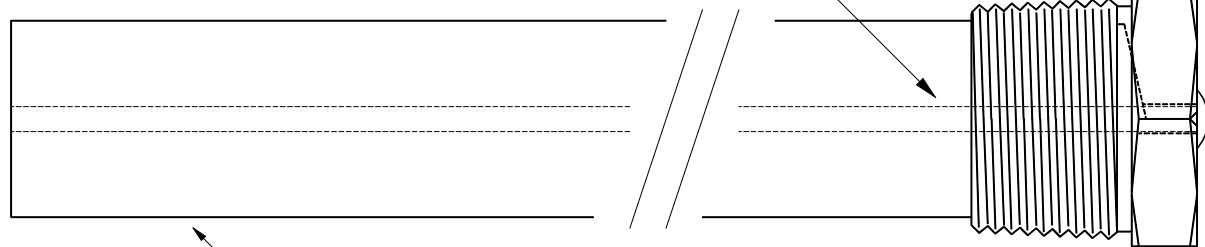


3.4 Ø Mild Steel (Wire) Core - Welded at Cap End

1" BSPT (Mild Steel) Cap



27 Ø



35
Hex

27 mm Ø Low Potential (AS2239-M2) Magnesium Rod

Chemical Composition Limits		Alloy:
Standard: AS2239 (Most current revision)		M2
Magnesium, Low Potential		
Element	min.	max.
Aluminium	2.5	3.5
Zinc	0.7	1.3
Manganese	0.20	1.5
Silicon	-	0.05
Copper	-	0.006
Iron	-	0.003
Nickel	-	0.001
Calcium	-	0.04
Other Impurities		
- each	-	-
- total	-	0.30
Magnesium	remainder	

- Notes
1. Anodes are cast to comply with CAA's standard casting tolerances
 2. All sharp edges removed for safe handling
 3. Anode insert material to meet relevant Australian/International specifications

Rev	Details of Change(s)	Nett Weight		Gross Weight	
		kg (nominal)	kg (nominal)	kg (nominal)	kg (nominal)
		0.313		0.363	
1	2013 Catalogue Version	02 NOV 17	R.N.	02 NOV 17	R.G.

CAA
Cathodic Anodes Australasia
cathodicanodes.com.au

Product		Magnesium Anode	
Part no.	CDMR-M2-27-0200-A	Scale	NTS
Drawing No:	CD2257	Rev	1
Drawn by: R Northey	Date: 02 NOV 2017	Sheet	1 of 1
All dimensions are in mm (nominal)			