

This drawing is the property of Cathodic Anodes Australasia. To be used with permission only. This drawing becomes an uncontrolled document once issued as hard or electronic copy. Customer to confirm current revision of drawing prior to ordering.

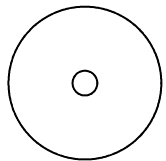
Component View - Scale 1 : 6.75



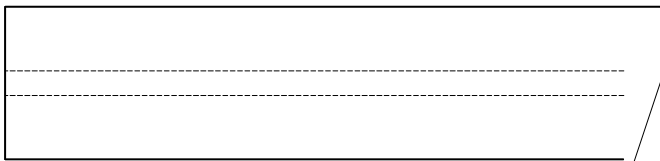
1655 O/L

3.4 Ø Mild Steel (Wire) Core - Welded at Cap End

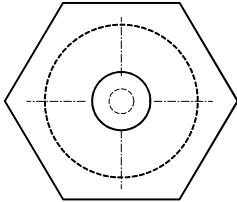
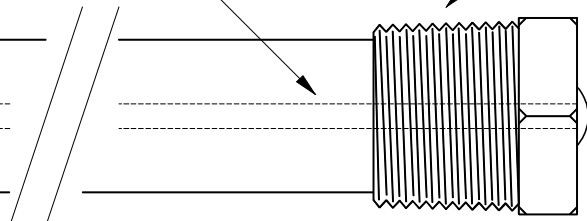
3/4 BSPT (Mild Steel) Cap



21 Ø



21 mm Ø Low Potential (AS2239-M2) Magnesium Rod



27 Hex

Chemical Composition Limits			Alloy: M2
Standard: AS2239 (Most current revision)			
Magnesium. Low Potential			
Element	min.	max.	
Aluminium	2.5	3.5	
Zinc	0.7	1.3	
Manganese	0.20	1.5	
Silicon	-	0.05	
Copper	-	0.006	
Iron	-	0.003	
Nickel	-	0.001	
Calcium	-	0.04	
Other Impurities			
- each	-	-	
- total	-	0.30	
Magnesium	remainder		

Notes

1. Anodes are cast to comply with CAA's standard casting tolerances
2. All sharp edges removed for safe handling
3. Anode insert material to meet relevant Australian/International specifications

Rev	Details of Change(s)	Nett Weight		Gross Weight	
		kg (nominal)		kg (nominal)	
		1.114		1.164	
1	2013 Catalogue Version	10 MAY 16	R.N.	10 MAY 16	R.G.



cathodicanodes.com.au

Product	
Magnesium Anode	
Part no.	Scale
CDMR-M2-21-1655-A	NTS
Drawing No: CD2254	Rev Sheet
	1 1 of 1
Drawn by: R Northey Date: 10 MAY 2016	
All dimensions are in mm (nominal)	

