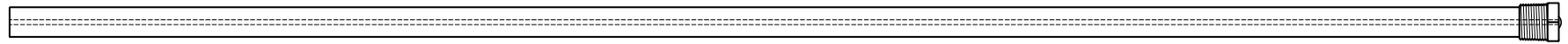


This drawing is the property of Cathodic Anodes Australasia. To be used with permission only.
 This drawing becomes an uncontrolled document once issued as hard or electronic copy.
 Customer to confirm current revision of drawing prior to ordering.

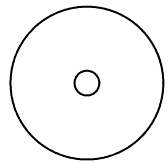
Component View - Scale 1 : 4.5



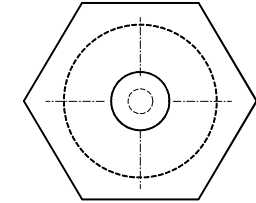
1100 O/L

3.4 Ø Mild Steel (Wire) Core - Welded at Cap End

3/4 BSPT (Mild Steel) Cap



21 Ø



27 Hex

21 mm Ø Low Potential (AS2239-M2) Magnesium Rod

Chemical Composition Limits		Alloy:
Standard: AS2239 (Most current revision)		M2
Magnesium. Low Potential		
Element	min.	max.
Aluminium	2.5	3.5
Zinc	0.7	1.3
Manganese	0.20	1.5
Silicon	-	0.05
Copper	-	0.006
Iron	-	0.003
Nickel	-	0.001
Calcium	-	0.04
Other Impurities	-	-
- each	-	-
- total	-	0.30
Magnesium	remainder	

Notes

1. Anodes are cast to comply with CAA's standard casting tolerances
2. All sharp edges removed for safe handling
3. Anode insert material to meet relevant Australian/International specifications

Rev	Details of Change(s)	Nett Weight		Gross Weight	
		kg (nominal)		kg (nominal)	
		0.741		0.791	
1	2013 Catalogue Version	09 MAY 16	R.N.	09 MAY 16	R.G.



Cathodic Anodes Australasia

cathodicanodes.com.au

Product		Magnesium Anode	
Part no.	CDMR-M2-21-1100-A	Scale	NTS
Drawing No:	CD2250	Rev	Sheet
		1	1 of 1
Drawn by: R Northey		Date: 09 MAY 2016	
All dimensions are in mm (nominal)			

