

This drawing is the property of Cathodic Anodes Australasia. To be used with permission only.
 This drawing becomes an uncontrolled document once issued as hard or electronic copy.
 Customer to confirm current revision of drawing prior to ordering.

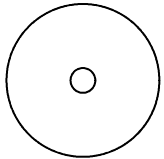
Component View - Scale 1 : 3.75



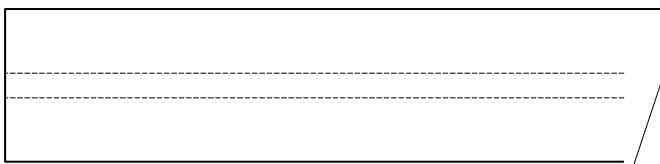
915 O/L

3.4 Ø Mild Steel (Wire) Core - Welded at Cap End

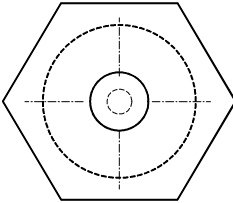
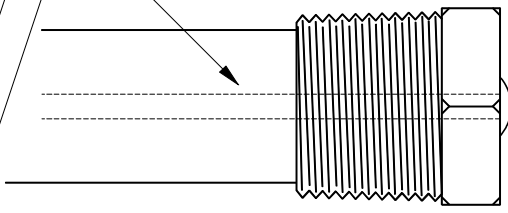
3/4 BSPT (Mild Steel) Cap



21 Ø



21 mm Ø Low Potential (AS2239-M2) Magnesium Rod



27 Hex

Chemical Composition Limits		Alloy:
Element	min.	max.
Aluminium	2.5	3.5
Zinc	0.7	1.3
Manganese	0.20	1.5
Silicon	-	0.05
Copper	-	0.006
Iron	-	0.003
Nickel	-	0.001
Calcium	-	0.04
Other Impurities	-	-
- each	-	-
- total	-	0.30
Magnesium	remainder	

Standard: AS2239 (Most current revision)
 Magnesium. Low Potential
M2

- Notes
1. Anodes are cast to comply with CAA's standard casting tolerances
 2. All sharp edges removed for safe handling
 3. Anode insert material to meet relevant Australian/International specifications

Rev	Details of Change(s)	Drawn	Initials	Verified	Initials
1	2013 Catalogue Version	27 APR 16	R.N.	27 APR 16	R.G.

Nett Weight Kg (nominal)	Gross Weight Kg (nominal)
0.617	0.667

CAA
 Cathodic Anodes Australasia
 cathodicanodes.com.au

Product Magnesium Anode	
Part no. CDMR-M2-21-0915-A	Scale NTS
Drawing No: CD2249	Rev 1 Sheet 1 of 1
Drawn by: R Northey Date: 27 APR 2016	
All dimensions are in mm (nominal)	