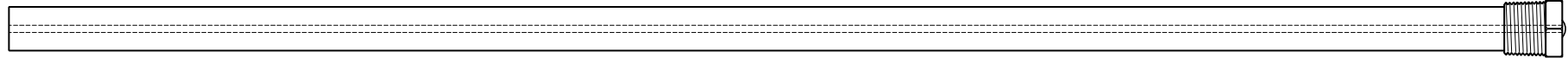


This drawing is the property of Cathodic Anodes Australasia. To be used with permission only.  
 This drawing becomes an uncontrolled document once issued as hard or electronic copy.  
 Customer to confirm current revision of drawing prior to ordering.

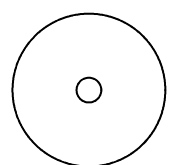
Component View - Scale 1 : 3



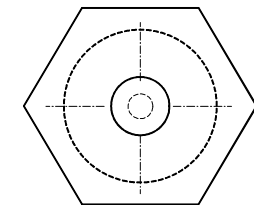
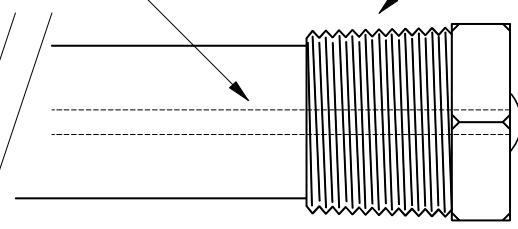
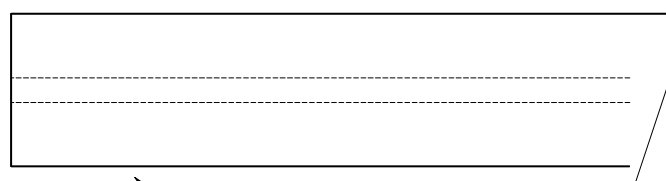
750 O/L

3.4 Ø Mild Steel (Wire) Core - Welded at Cap End

3/4 BSPT (Mild Steel) Cap



21 Ø



27 Hex

21 mm Ø Low Potential (AS2239-M2) Magnesium Rod

Chemical Composition Limits		Alloy:	
Standard: AS2239 (Most current revision)		<b>M2</b>	
Magnesium. Low Potential			
Element	min.	max.	
Aluminium	2.5	3.5	
Zinc	0.7	1.3	
Manganese	0.20	1.5	
Silicon	-	0.05	
Copper	-	0.006	
Iron	-	0.003	
Nickel	-	0.001	
Calcium	-	0.04	
Other Impurities	-	-	
- each	-	-	
- total	-	0.30	
Magnesium	remainder		

- Notes
- Anodes are cast to comply with CAA's standard casting tolerances
  - All sharp edges removed for safe handling
  - Anode insert material to meet relevant Australian/International specifications

Rev		Details of Change(s)		Drawn		Initials		Verified		Initials	
1		2013 Catalogue Version		27 APR 16		R.N.		27 APR 16		R.G.	

Nett Weight	Gross Weight
Kg (nominal)	Kg (nominal)
<b>0.506</b>	<b>0.556</b>



cathodicanodes.com.au

Product		<b>Magnesium Anode</b>	
Part no.		CDMR-M2-21-0750-A	
Scale		NTS	
Drawing No:		CD2247	
Rev	Sheet		
1	1 of 1		
Drawn by: R Northey		Date: 27 APR 2016	
All dimensions are in mm (nominal)			

