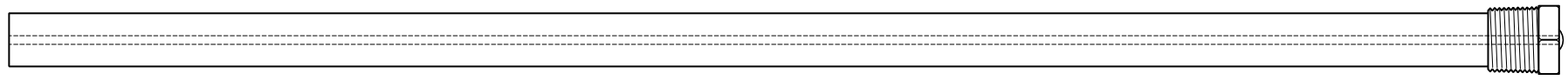


This drawing is the property of Cathodic Anodes Australasia. To be used with permission only. This drawing becomes an uncontrolled document once issued as hard or electronic copy. Customer to confirm current revision of drawing prior to ordering.

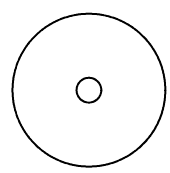
Component View - Scale 1 : 2.5



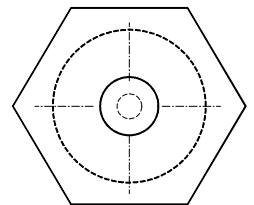
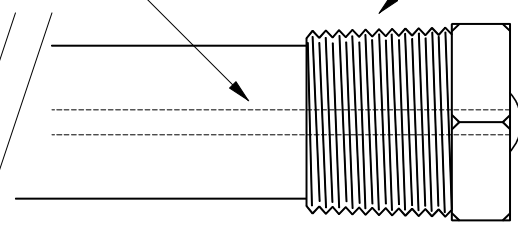
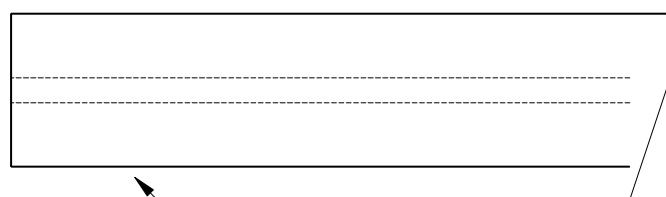
610 O/L

3.4 Ø Mild Steel (Wire) Core - Welded at Cap End

3/4 BSPT (Mild Steel) Cap



21 Ø



27 Hex

21 mm Ø Low Potential (AS2239-M2) Magnesium Rod

| Chemical Composition Limits              |           | Alloy:    |
|------------------------------------------|-----------|-----------|
| Element                                  | min.      | max.      |
| Standard: AS2239 (Most current revision) |           |           |
| Magnesium. Low Potential                 |           | <b>M2</b> |
| Aluminium                                | 2.5       | 3.5       |
| Zinc                                     | 0.7       | 1.3       |
| Manganese                                | 0.20      | 1.5       |
| Silicon                                  | -         | 0.05      |
| Copper                                   | -         | 0.006     |
| Iron                                     | -         | 0.003     |
| Nickel                                   | -         | 0.001     |
| Calcium                                  | -         | 0.04      |
| Other Impurities                         | -         | -         |
| - each                                   | -         | -         |
| - total                                  | -         | 0.30      |
| Magnesium                                | remainder |           |

- Notes
- Anodes are cast to comply with CAA's standard casting tolerances
  - All sharp edges removed for safe handling
  - Anode insert material to meet relevant Australian/International specifications

| Nett Weight  | Gross Weight |
|--------------|--------------|
| Kg (nominal) | Kg (nominal) |
| <b>0.412</b> | <b>0.462</b> |



Cathodic Anodes Australasia

cathodicanodes.com.au

|                                    |            |                        |  |
|------------------------------------|------------|------------------------|--|
| Product                            |            | <b>Magnesium Anode</b> |  |
| Part no.                           | Scale      |                        |  |
| <b>CDMR-M2-21-0610-A</b>           | <b>NTS</b> |                        |  |
| Drawing No:                        | Rev        | Sheet                  |  |
| <b>CD2246</b>                      | <b>1</b>   | <b>1 of 1</b>          |  |
| Drawn by: R Northey                |            | Date: 27 APR 2016      |  |
| All dimensions are in mm (nominal) |            |                        |  |

| Rev | Details of Change(s)   | Drawn     | Initials | Verified  | Initials |
|-----|------------------------|-----------|----------|-----------|----------|
| 1   | 2013 Catalogue Version | 27 APR 16 | R.N.     | 27 APR 16 | R.G.     |
|     |                        |           |          |           |          |
|     |                        |           |          |           |          |
|     |                        |           |          |           |          |