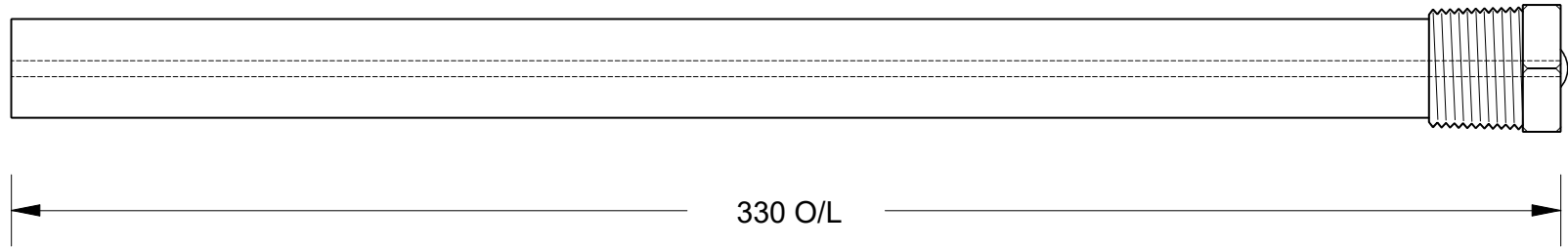


This drawing is the property of Cathodic Anodes Australasia. To be used with permission only.
 This drawing becomes an uncontrolled document once issued as hard or electronic copy.
 Customer to confirm current revision of drawing prior to ordering.

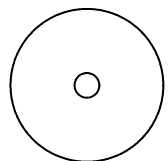
Component View - Scale 1 : 1.5



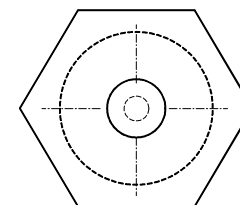
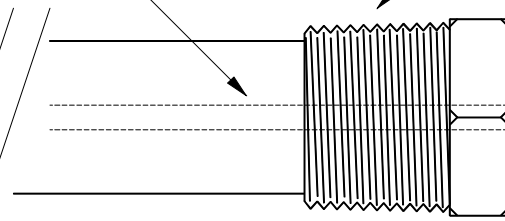
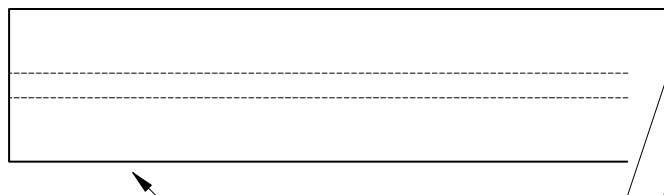
330 O/L

3.4 Ø Mild Steel (Wire) Core - Welded at Cap End

3/4 BSPT (Mild Steel) Cap



21 Ø



27 Hex

21 mm Ø Low Potential (AS2239-M2) Magnesium Rod

Chemical Composition Limits			Alloy:
Standard: AS2239 (Most current revision)			M2
Magnesium. Low Potential			
Element	min.	max.	
Aluminium	2.5	3.5	
Zinc	0.7	1.3	
Manganese	0.20	1.5	
Silicon	-	0.05	
Copper	-	0.006	
Iron	-	0.003	
Nickel	-	0.001	
Calcium	-	0.04	
Other Impurities			
- each	-	-	
- total	-	0.30	
Magnesium	remainder		

Notes

1. Anodes are cast to comply with CAA's standard casting tolerances
2. All sharp edges removed for safe handling
3. Anode insert material to meet relevant Australian/International specifications

Rev	Details of Change(s)	Nett Weight		Gross Weight	
		Drawn	Initials	Verified	Initials
1	2013 Catalogue Version	27 APR 16	R.N.	27 APR 16	R.G.

Nett Weight
Kg (nominal)
0.224

Gross Weight
Kg (nominal)
0.274



Cathodic Anodes Australasia

cathodicanodes.com.au

Product Magnesium Anode		Scale NTS
Part no. CDMR-M2-21-0330-A	Rev 1	Sheet 1 of 1
Drawing No: CD2243		
Drawn by: R Northey Date: 27 APR 2016		
All dimensions are in mm (nominal)		