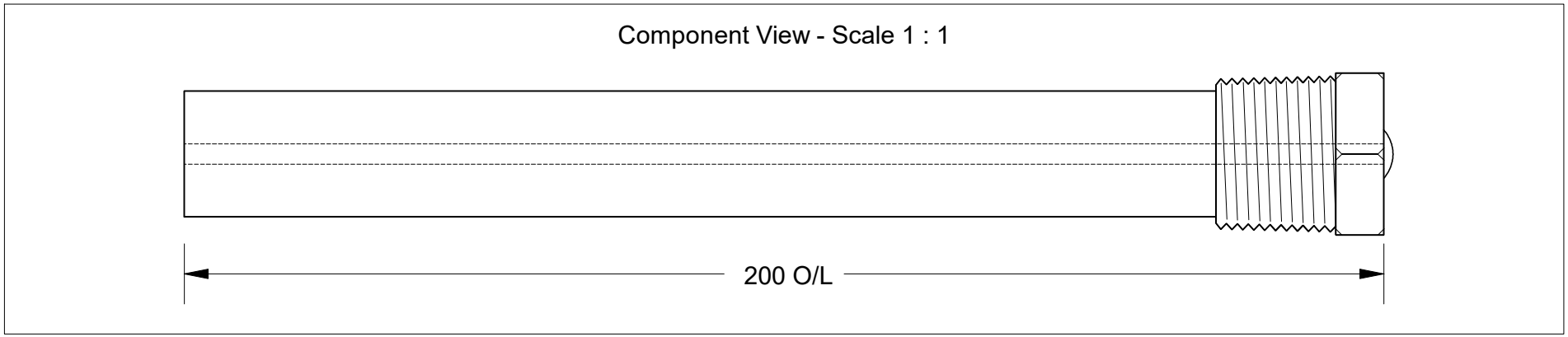


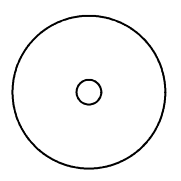
This drawing is the property of Cathodic Anodes Australasia. To be used with permission only. This drawing becomes an uncontrolled document once issued as hard or electronic copy. Customer to confirm current revision of drawing prior to ordering.

Component View - Scale 1 : 1

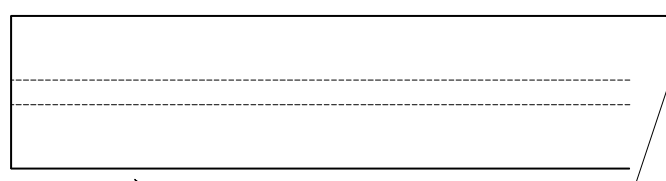


3.4 Ø Mild Steel (Wire) Core - Welded at Cap End

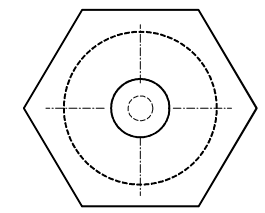
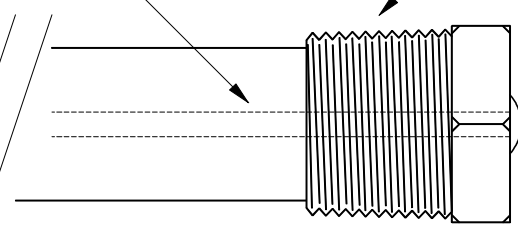
3/4 BSPT (Mild Steel) Cap



21 Ø



21 mm Ø Low Potential (AS2239-M2) Magnesium Rod



27 Hex

Chemical Composition Limits			Alloy:
Standard: AS2239 (Most current revision)			<b>M2</b>
Magnesium, Low Potential			
Element	min.	max.	
Aluminium	2.5	3.5	
Zinc	0.7	1.3	
Manganese	0.20	1.5	
Silicon	-	0.05	
Copper	-	0.006	
Iron	-	0.003	
Nickel	-	0.001	
Calcium	-	0.04	
Other Impurities			
- each	-	-	
- total	-	0.30	
Magnesium	remainder		

- Notes
1. Anodes are cast to comply with CAA's standard casting tolerances
  2. All sharp edges removed for safe handling
  3. Anode insert material to meet relevant Australian/International specifications

Nett Weight		Gross Weight			
Kg (nominal)		Kg (nominal)			
<b>0.136</b>		<b>0.186</b>			
Rev	Details of Change(s)	Drawn	Initials	Verified	Initials
1	2013 Catalogue Version	27 APR 16	R.N.	27 APR 16	R.G.

**CAA**  
Cathodic Anodes Australasia  
cathodicanodes.com.au

Product		<b>Magnesium Anode</b>					
Part no.		CDMR-M2-21-0200-A					
Drawing No:		<b>CD2240</b>					
Drawn by: R Northey		Date: 27 APR 2016					
All dimensions are in mm (nominal)		<table border="1"> <tr> <th>Rev</th> <th>Sheet</th> </tr> <tr> <td>1</td> <td>1 of 1</td> </tr> </table>		Rev	Sheet	1	1 of 1
Rev	Sheet						
1	1 of 1						

4

3

2

1