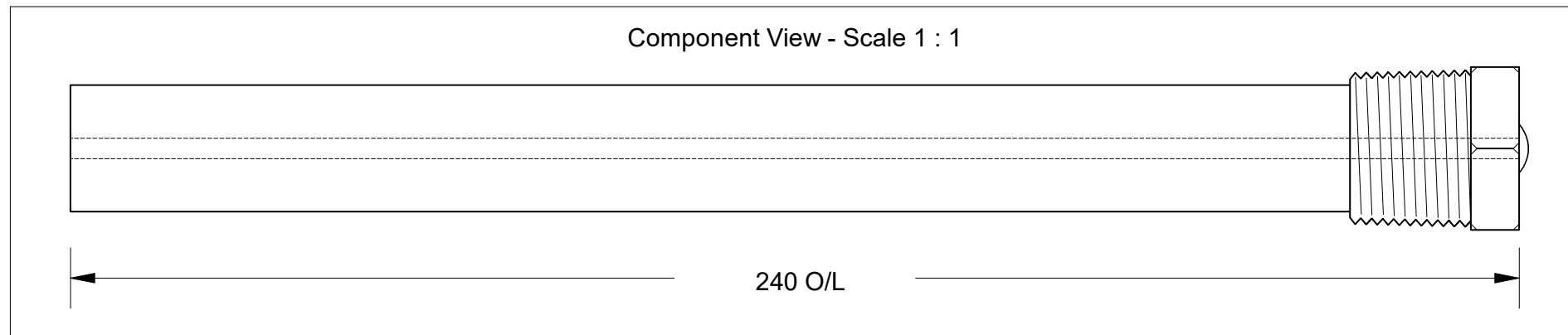


This drawing is the property of Cathodic Anodes Australasia. To be used with permission only.
 This drawing becomes an uncontrolled document once issued as hard or electronic copy.
 Customer to confirm current revision of drawing prior to ordering.

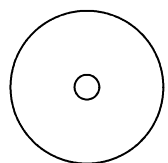
Component View - Scale 1 : 1



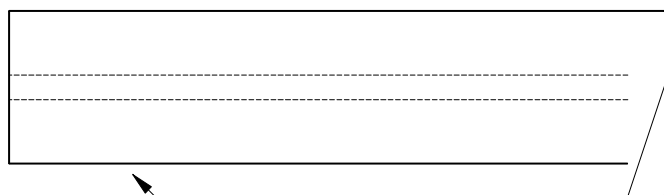
240 O/L

3.4 Ø Mild Steel (Wire) Core - Welded at Cap End

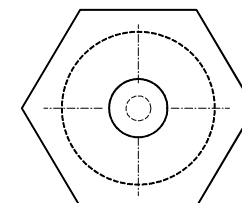
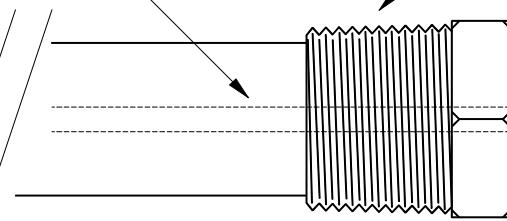
3/4 NPT (Mild Steel) Cap



21 Ø



21 mm Ø Low Potential (AS2239-M2) Magnesium Rod



27 Hex

Stamping:

CAAGF - M2N

Hex of Plug to be painted Black

Chemical Composition Limits			Alloy:
Standard: AS2239 (Most current revision)			M2
Magnesium. Low Potential			
Element	min.	max.	
Aluminium	2.5	3.5	
Zinc	0.7	1.3	
Manganese	0.20	1.5	
Silicon	-	0.05	
Copper	-	0.006	
Iron	-	0.003	
Nickel	-	0.001	
Calcium	-	0.04	
Other Impurities			
- each	-	-	
- total	-	0.30	
Magnesium	remainder		

Notes

- Anodes are cast to comply with CAA's standard casting tolerances
- All sharp edges removed for safe handling
- Anode insert material to meet relevant Australian/International specifications

Rev	Details of Change(s)	Nett Weight		Gross Weight	
		kg (nominal)		kg (nominal)	
		0.164		0.214	
1	2013 Catalogue Version	26 APR 16	R.N.	26 APR 16	R.G.



Cathodic Anodes Australasia

cathodicanodes.com.au

Product			
Magnesium Anode			
Part no.		Scale	
CDMR-M2-21-240A-NPT		N T S	
Drawing No: CD2237		Rev	Sheet
		1	1 of 1
Drawn by: R Northey Date: 26 APR 2016			
All dimensions are in mm (nominal)			

