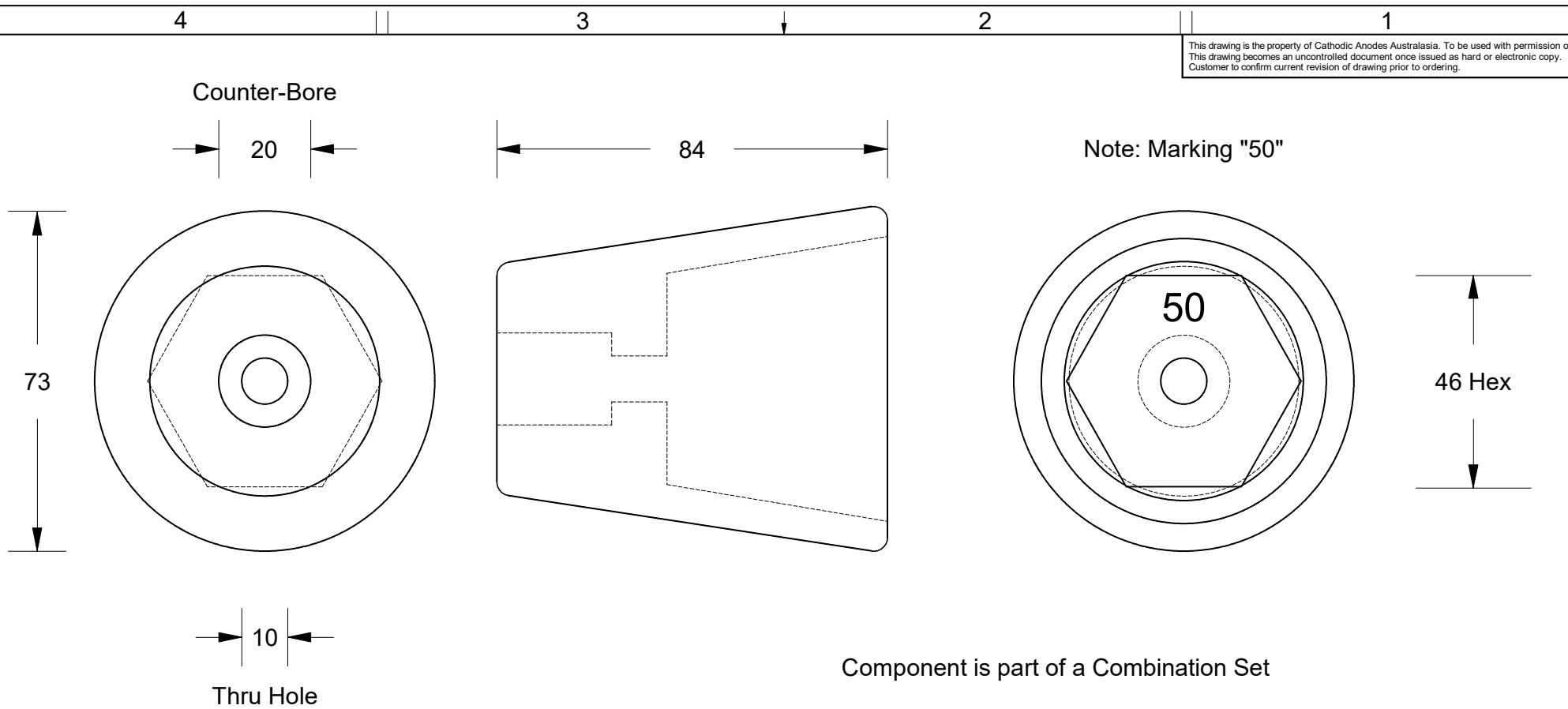


This drawing is the property of Cathodic Anodes Australasia. To be used with permission only.
 This drawing becomes an uncontrolled document once issued as hard or electronic copy.
 Customer to confirm current revision of drawing prior to ordering.



Note: Marking "50"

Component is part of a Combination Set
 Part Number: CDZPN-250 HZ - Zinc Anode Only
 Part Number: CDZPN-250 HZC - Zinc Anode & Bronze Insert
 Part Number: CDZPN-250 HB - Bronze Insert Only

Chemical Composition Limits		Alloy:
Standard: AS2239* (Most current revision)		Z1
Element	min.	max.
Zinc		
Cadmium	0.025	0.07
Aluminium	0.10	0.50
Silicon	-	0.005
Copper	-	0.005
Iron	-	0.005
Lead	-	0.006
Other Impurities		
- each	-	0.005
- total	-	0.02
Zinc	remainder	

- Notes
1. Anodes are cast to comply with CAA's standard casting tolerances
 2. All sharp edges removed for safe handling
 3. Anode insert material to meet relevant Australian/International specifications

All dimensions are in mm (nominal)

Rev		Details of Change(s)	Date	Drawn	Verified
1		Initial Drawing - 2013 Catalogue Version	31 March 2016	R.N.	R.G.

Nett Weight	Gross Weight
Kg (nominal)	Kg (nominal)
N/A	1.00

CAA
 Cathodic Anodes Australasia
 cathodicanodes.com.au

Product	
Zinc Propeller Nut Anode	
Part no.	Scale
CDZPN-250 HZ	1 : 1.25
Drawing No: CD2218	Rev 1 Sheet 1 of 1
Drawn by: R Northey	Date: 31 MAR 2016

* Corresponds to MIL-DTL-18001L alloy composition