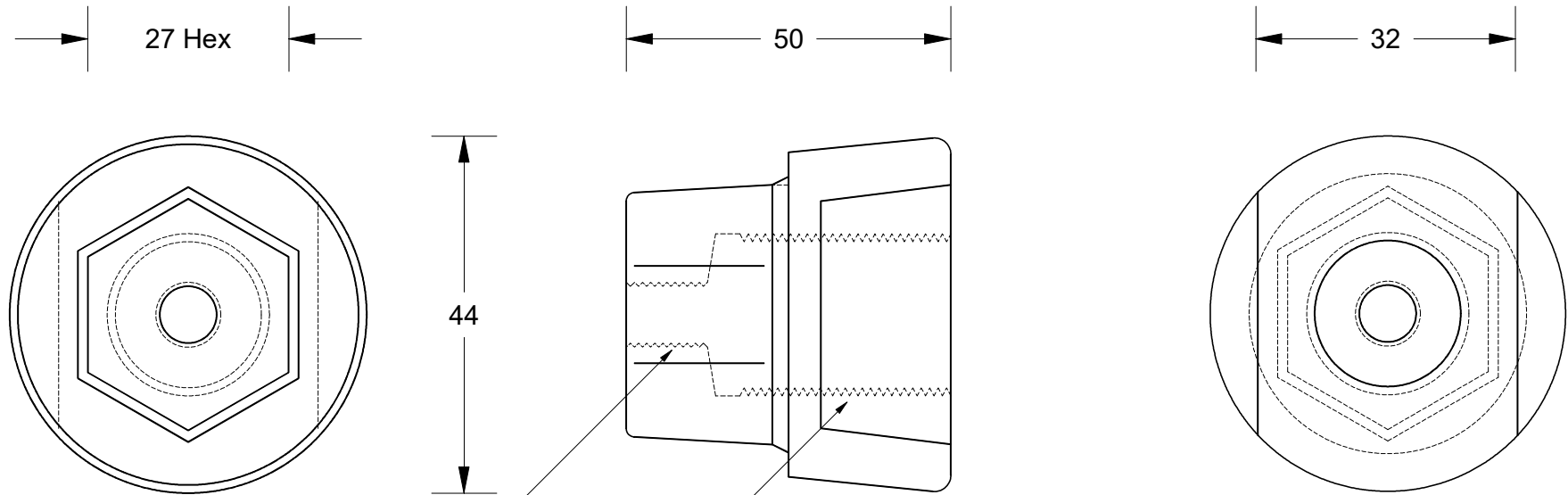


This drawing is the property of Cathodic Anodes Australasia. To be used with permission only.  
 This drawing becomes an uncontrolled document once issued as hard or electronic copy.  
 Customer to confirm current revision of drawing prior to ordering.



Component is part of a Combination Set

Part Number: CDZPN-230 HZ - Zinc Anode Only

Part Number: CDZPN-230 HZC - Zinc Anode & Bronze Insert

Part Number: CDZPN-230 HB - Bronze Insert Only

M8-C

M20-F

Chemical Composition Limits		Alloy:
Standard: AS2239* (Most current revision)		<b>Z1</b>
Zinc		
Element	min.	max.
Cadmium	0.025	0.07
Aluminium	0.10	0.50
Silicon	-	0.005
Copper	-	0.005
Iron	-	0.005
Lead	-	0.006
Other Impurities	-	-
- each	-	0.005
- total	-	0.02
Zinc	remainder	

\* Corresponds to MIL-DTL-18001L alloy composition

Notes

1. Anodes are cast to comply with CAA's standard casting tolerances
2. All sharp edges removed for safe handling
3. Anode insert material to meet relevant Australian/International specifications

All dimensions are in mm (nominal)

Rev	Details of Change(s)	Date	Drawn	Verified
1	Initial Drawing - 2013 Catalogue Version	31 March 2016	R.N.	R.G.

Nett Weight	Gross Weight
Kg (nominal)	Kg (nominal)
<b>N/A</b>	<b>0.305</b>



Cathodic Anodes Australasia

cathodicanodes.com.au

Product			
<b>Zinc Propeller Nut Bronze Insert</b>			
Part no.	Scale	Rev	Sheet
<b>CDZPN-230 HB</b>	<b>1.5 : 1</b>	<b>1</b>	<b>1 of 1</b>
Drawing No: <b>CD2214</b>		Date: 31 MAR 2016	
Drawn by: R Northey		Date: 31 MAR 2016	

