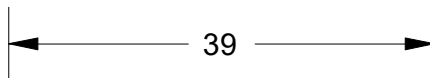
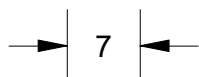
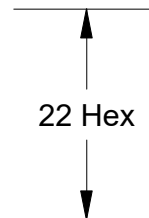
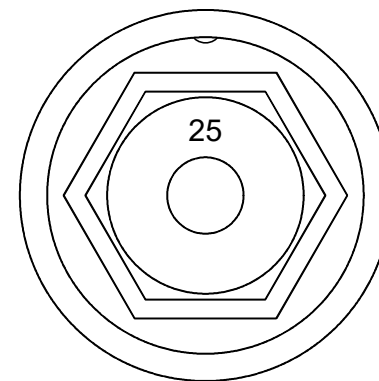
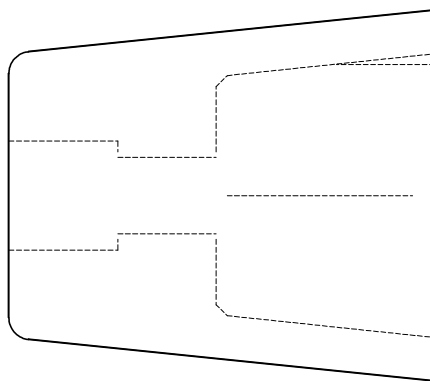
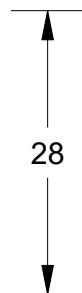
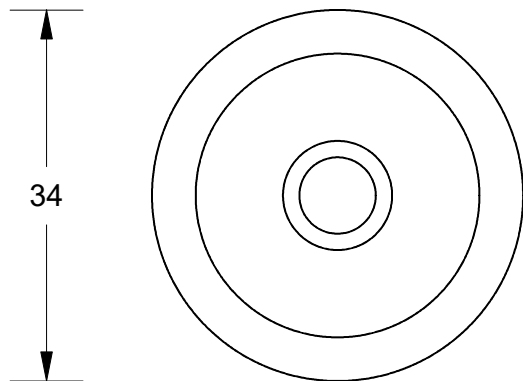


This drawing is the property of Cathodic Anodes Australasia. To be used with permission only.
 This drawing becomes an uncontrolled document once issued as hard or electronic copy.
 Customer to confirm current revision of drawing prior to ordering.

Counter-Bore



Note: Marking "25"



Thru Hole

Component is part of a Combination Set

Part Number: CDZPN-222/225 HZ - Zinc Anode Only

Part Number: CDZPN-222/225 HZC - Zinc Anode & Bronze Insert

Part Number: CDZPN-222/225 HB - Bronze Insert Only

All dimensions are in mm (nominal)

Chemical Composition Limits			Alloy: Z1
Standard: AS2239* ^(Most current revision)			
Zinc			
Element	min.	max.	
Cadmium	0.025	0.07	
Aluminium	0.10	0.50	
Silicon	-	0.005	
Copper	-	0.005	
Iron	-	0.005	
Lead	-	0.006	
Other Impurities			
- each	-	0.005	
- total	-	0.02	
Zinc	remainder		

* Corresponds to MIL-DTL-18001L alloy composition

Notes

- Anodes are cast to comply with CAA's standard casting tolerances
- All sharp edges removed for safe handling
- Anode insert material to meet relevant Australian/International specifications

Rev	Details of Change(s)	Date	Drawn	Verified
1	Initial Drawing - 2013 Catalogue Version	29 March 2016	R.N.	R.G.

Nett Weight	Gross Weight
Kg (nominal)	Kg (nominal)
N/A	0.120



Cathodic Anodes Australasia

cathodicanodes.com.au

Product			
Zinc Propeller Nut Anode			
Part no.		Scale	
CDZPN-222/225 HZ		1.5 : 1	
Drawing No: CD2209		Rev	Sheet
		1	1 of 1
Drawn by: R Northey Date: 29 MAR 2016			