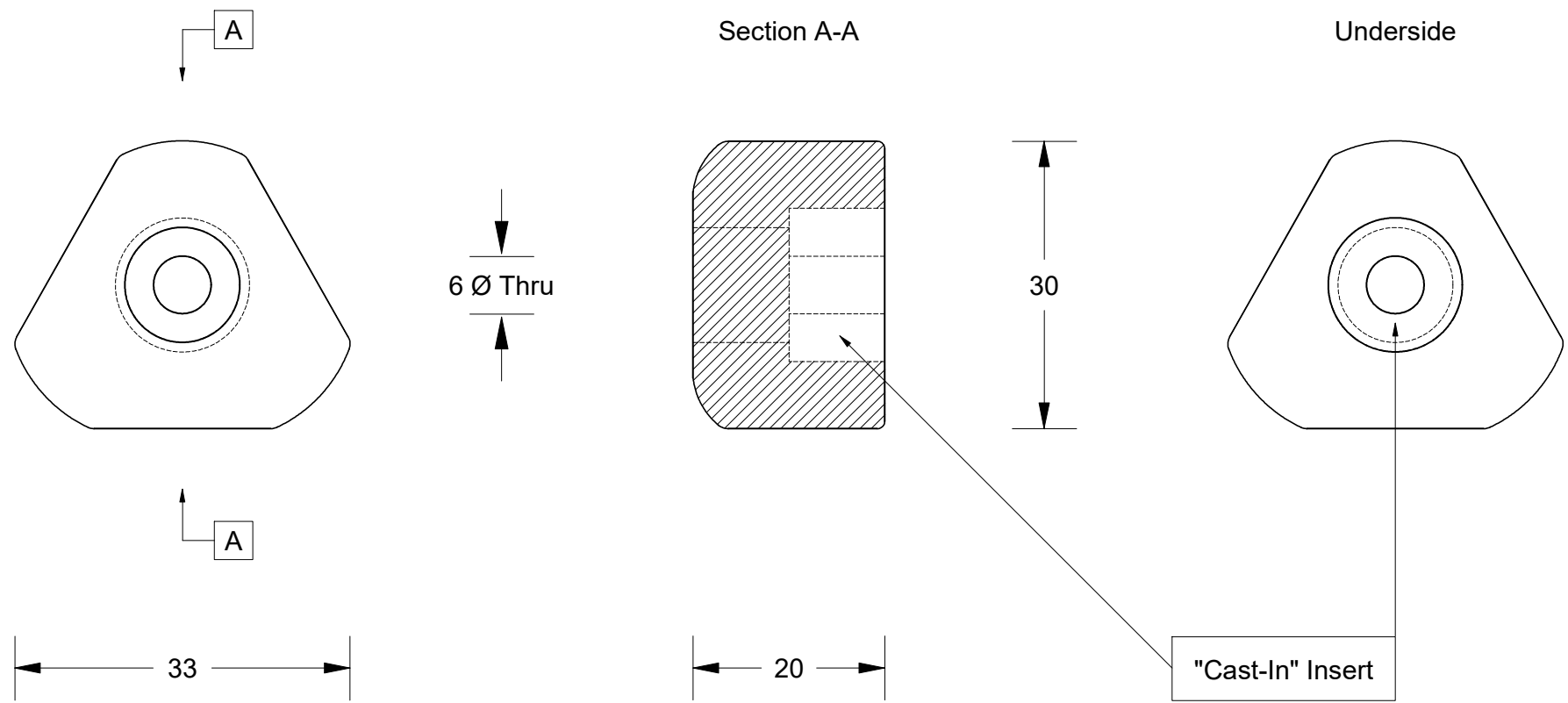


This drawing is the property of Cathodic Anodes Australasia. To be used with permission only. This drawing becomes an uncontrolled document once issued as hard or electronic copy. Customer to confirm current revision of drawing prior to ordering.



Gori Prop Nut - Replaces Genuine Part No: 1407410000

All dimensions are in mm (nominal)

Chemical Composition Limits		Alloy:
Element	min.	max.
Standard: AS2239* (Most current revision)		<b>Z1</b>
Zinc		
Cadmium	0.025	0.07
Aluminium	0.10	0.50
Silicon	-	0.005
Copper	-	0.005
Iron	-	0.005
Lead	-	0.006
Other Impurities		
- each	-	0.005
- total	-	0.02
Zinc	remainder	

- Notes
1. Anodes are cast to comply with CAA's standard casting tolerances
  2. All sharp edges removed for safe handling
  3. Anode insert material to meet relevant Australian/International specifications

Rev	Details of Change(s)	Date	Drawn	Verified
1	Initial Drawing - 2013 Catalogue Version	23 March 2016	R.N.	R.G.

Nett Weight Kg (nominal)	Gross Weight Kg (nominal)
<b>N/A</b>	<b>0.090</b>

**CAA**  
Cathodic Anodes Australasia  
cathodicanodes.com.au

Product	
<b>Zinc Propeller Nut Anode</b>	
Part no.	Scale
<b>CDZ9 - 165</b>	<b>1.5 : 1</b>
Drawing No: <b>CD2206</b>	Rev   Sheet
	<b>1   1 of 1</b>
Drawn by: R Northey Date: 23 MAR 2016	

\* Corresponds to MIL-DTL-18001L alloy composition