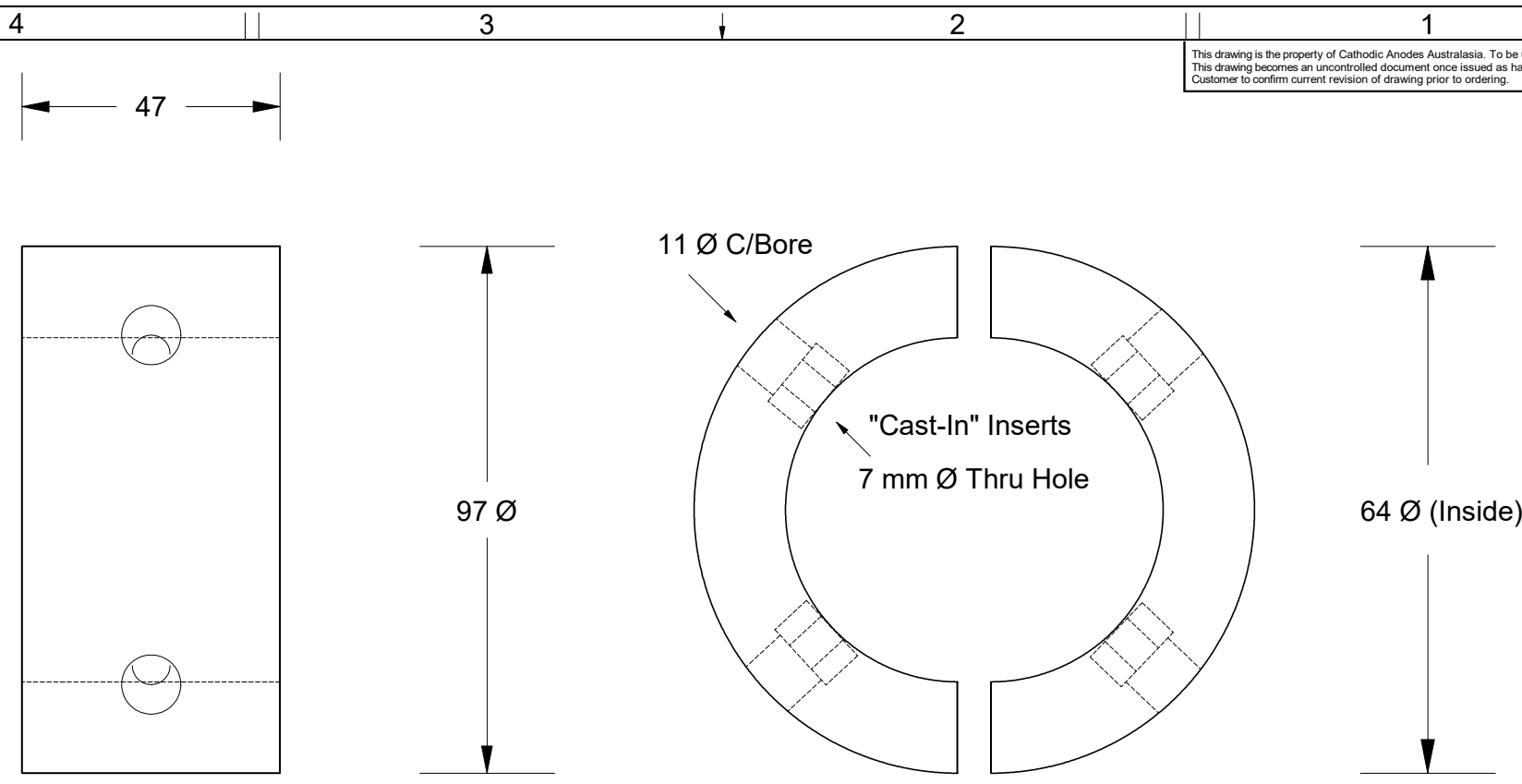


This drawing is the property of Cathodic Anodes Australasia. To be used with permission only.
 This drawing becomes an uncontrolled document once issued as hard or electronic copy.
 Customer to confirm current revision of drawing prior to ordering.



Gori (Split Type) - Replaces Genuine Part No: 1554000000

All dimensions are in mm (nominal)

Chemical Composition Limits			Alloy: Z1
Element	min.	max.	
Standard: AS2239* (Most current revision)			
Zinc			
Cadmium	0.025	0.07	
Aluminium	0.10	0.50	
Silicon	-	0.005	
Copper	-	0.005	
Iron	-	0.005	
Lead	-	0.006	
Other Impurities			
- each	-	0.005	
- total	-	0.02	
Zinc	remainder		

- Notes
1. Anodes are cast to comply with CAA's standard casting tolerances
 2. All sharp edges removed for safe handling
 3. Anode insert material to meet relevant Australian/International specifications

Nett Weight Kg (nominal)		Gross Weight Kg (nominal)		
N/A		1.37		
Rev	Details of Change(s)	Date	Drawn	Verified
1	Initial Drawing - 2013 Catalogue Version	22 March 2016	R.N.	R.G.

CAA
Cathodic Anodes Australasia

cathodicanodes.com.au

Product			
Split Collar Zinc Anode			
Part no.		Scale	
CDZ9 - 171		1 : 1.25	
Drawing No: CD2200		Rev	Sheet
Drawn by: R Northey Date: 22 MAR 2016		1	1 of 1

* Corresponds to MIL-DTL-18001L alloy composition