

STANDARD CASTING TAPER AND RADIUS APPLY

This drawing is the property of Cathodic Anodes Australasia. To be used with permission only.  
This drawing becomes an uncontrolled document once issued as hard or electronic copy.  
Customer to confirm current revision of drawing prior to ordering.

PLAN VIEW

SIDE VIEW

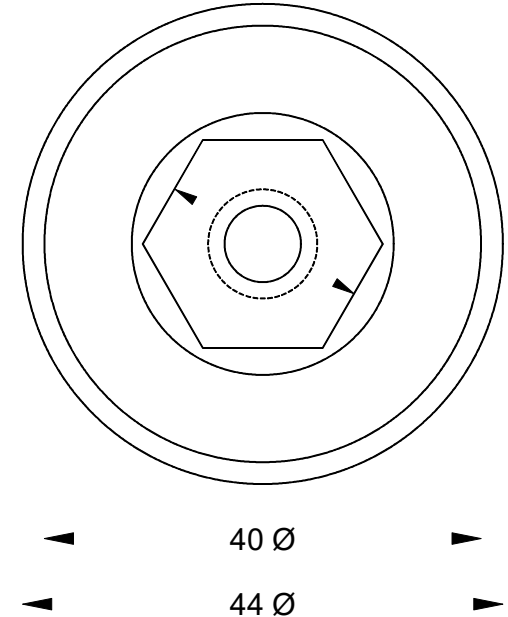
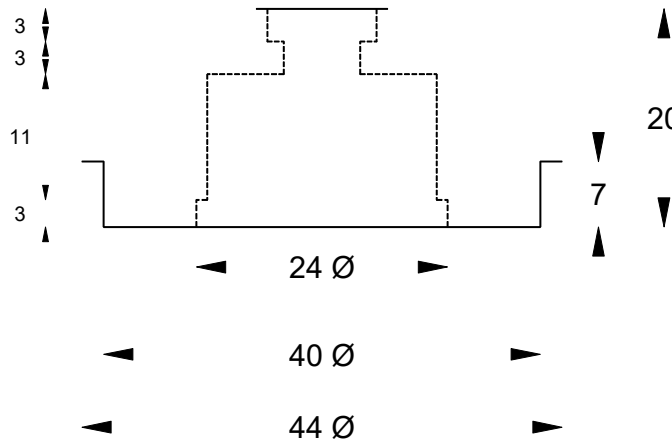
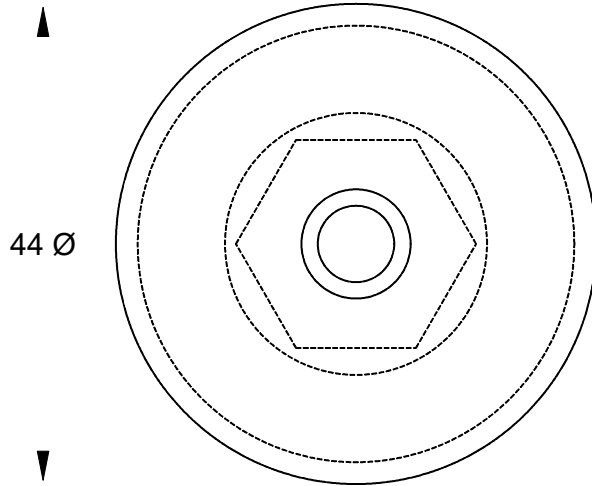
PLAN "UNDERSIDE"

10  
7

Counterbore = 10 mm  
Through Hole = 7 mm

Counterbore = 24 mm 24

HEX = 20 mm



- Notes
1. Anodes are cast to comply with CAA's standard casting tolerances
  2. All sharp edges removed for safe handling
  3. Anode insert material to meet relevant Australian/International specifications

SIDEPower (SLEIPNER) BOW THRUSTER MODEL NO SP55Si, 55S,75Ti,75T,95Ti,95T,100 Hyd

REPLACES GENUINE PART NO 20 1180

All dimensions are in mm (nominal)

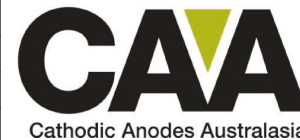
Chemical Composition Limits			Alloy: <b>Z1</b>
Standard: AS2239* (Most current revision)			
Zinc			
Element	min.	max.	
Cadmium	0.025	0.07	
Aluminium	0.10	0.50	
Silicon	-	0.005	
Copper	-	0.005	
Iron	-	0.005	
Lead	-	0.006	
Other Impurities			
- each	-	0.005	
- total	-	0.02	
Zinc	remainder		

\* Corresponds to MIL-DTL-18001L alloy composition

DO NOT SCALE

Rev	Details of Change(s)	Date	Drawn	Verified
1	Cathodic Diecasting Original	20 June 2011	R.N.	R.G.
2	2013 Catalogue Version (CAA Logo)	01 December 2015	R.N.	R.G.

Nett Weight Kg (nominal)	Gross Weight Kg (nominal)
<b>0.120</b>	<b>0.120</b>



cathodicanodes.com.au

Product <b>Zinc Anode</b>		Scale <b>1.5 : 1</b>	
Part no. <b>CDZ9 - 101</b>		Rev <b>2</b>	Sheet <b>1 of 1</b>
Drawing No: <b>CD2150</b>		Date: 01 DEC 2015	
Drawn by: R Northey		Date: 01 DEC 2015	

