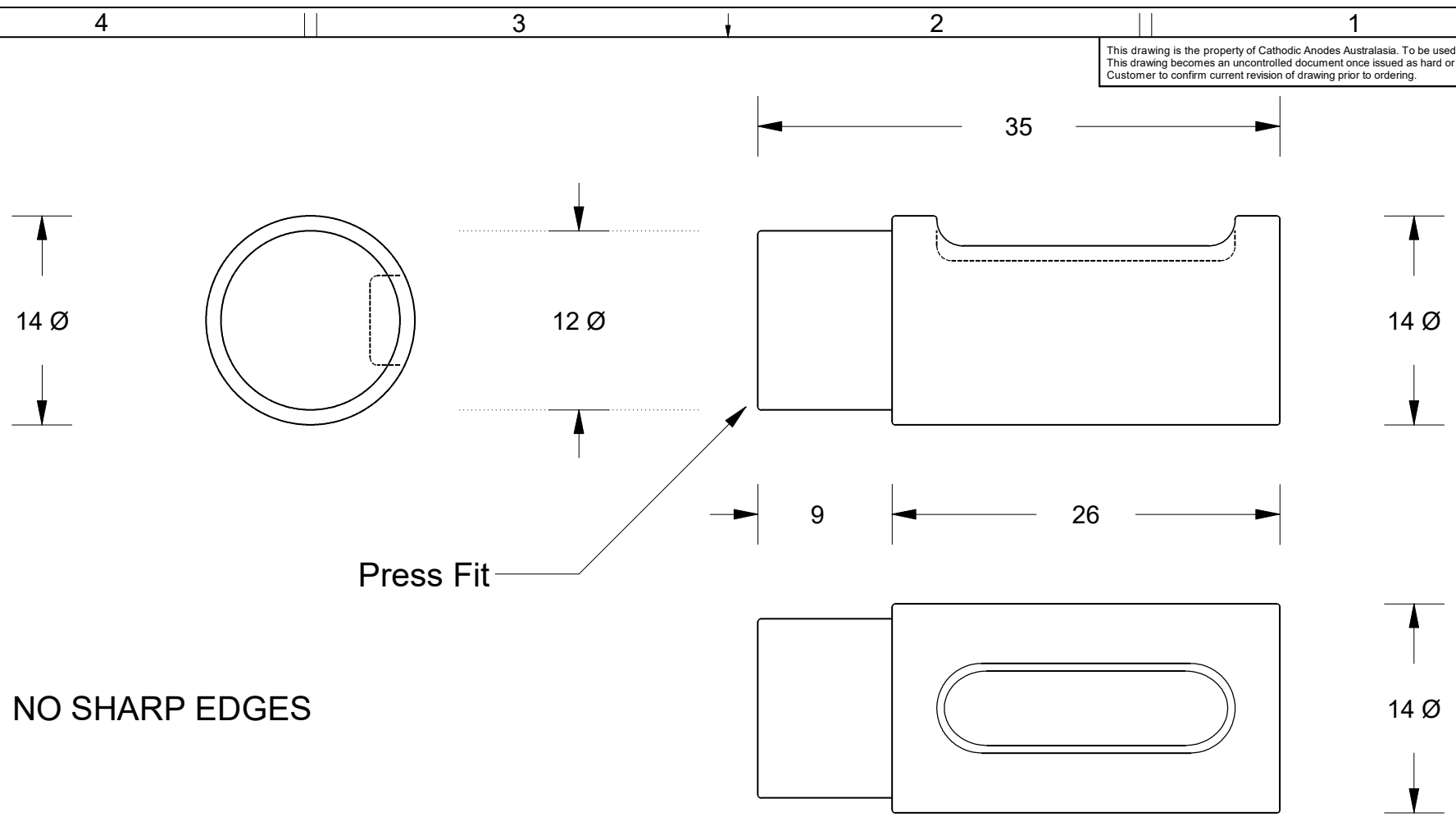


This drawing is the property of Cathodic Anodes Australasia. To be used with permission only.
 This drawing becomes an uncontrolled document once issued as hard or electronic copy.
 Customer to confirm current revision of drawing prior to ordering.



Press Fit

NO SHARP EDGES

All dimensions are in mm (nominal)

- Notes
- Anodes are cast to comply with CAA's standard casting tolerances
 - All sharp edges removed for safe handling
 - Anode insert material to meet relevant Australian/International specifications

Rev	Details of Change(s)	Date	Drawn	Verified
1	Cathodic Diecasting Original	06 June 2011	R.N.	R.G.
2	2013 Catalogue Version (CAA Logo)	10 November 2014	R.N.	R.G.
3	Dimension Changes Noted (LS)	01 July 2020	R.N.	L.S.

Nett Weight Kg (nominal)	Gross Weight Kg (nominal)
0.030	0.030

CAA
Cathodic Anodes Australasia
cathodicanodes.com.au

Product Zinc Anode		Scale 2.5 : 1	
Part no. CDZ9-094		Rev 3	Sheet 1 of 1
Drawing No: CD2116		Drawn by: R Northey Date: 01 JUL 2020	
Mould No: N/A		Tooling: N/A	

Chemical Composition Limits			Alloy:
Standard: AS2239* (Most current revision)			Z1
Zinc	min.	max.	
Element			
Cadmium	0.025	0.07	
Aluminium	0.10	0.50	
Silicon	-	0.005	
Copper	-	0.005	
Iron	-	0.005	
Lead	-	0.006	
Other Impurities			
- each	-	0.005	
- total	-	0.02	
Zinc	remainder		

* Corresponds to MIL-DTL-18001L alloy composition