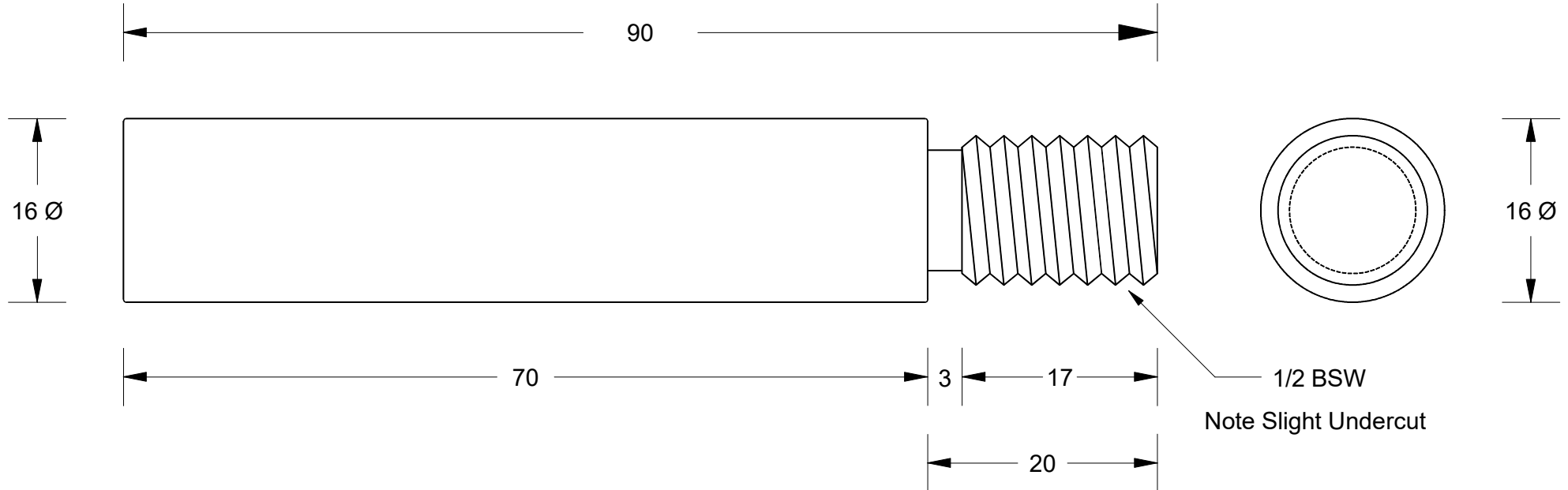


This drawing is the property of Cathodic Anodes Australasia. To be used with permission only.
 This drawing becomes an uncontrolled document once issued as hard or electronic copy.
 Customer to confirm current revision of drawing prior to ordering.

NO SHARP EDGES



Chemical Composition Limits			Alloy: Z1
Standard: AS2239* (Most current revision)			
Zinc			
Element	min.	max.	
Cadmium	0.025	0.07	
Aluminium	0.10	0.50	
Silicon	-	0.005	
Copper	-	0.005	
Iron	-	0.005	
Lead	-	0.006	
Other Impurities			
- each	-	0.005	
- total	-	0.02	
Zinc		remainder	

* Corresponds to MIL-DTL-18001L alloy composition

- Notes
1. Anodes are cast to comply with CAA's standard casting tolerances
 2. All sharp edges removed for safe handling
 3. Anode insert material to meet relevant Australian/International specifications



Nett Weight Kg (nominal)	Gross Weight Kg (nominal)			
0.120	0.120			
Rev	Details of Change(s)	Date	Drawn	Verified
1	Cathodic Diecasting Original	09 May 2011	R.N.	R.G.
2	2013 Catalogue Version (CAA Logo)	10 November 2014	R.N.	R.G.

Cathodic Anodes Australasia

cathodicanodes.com.au

Product Zinc Anode			
Part no. CDZ9-158		Scale 2 : 1	
Drawing No: CD2103		Rev 2	Sheet 1 of 1
Drawn by: R Northey		Date: 10 NOV 2014	
Mould No: N/A		Tooling: N/A	

All dimensions are in mm (nominal)