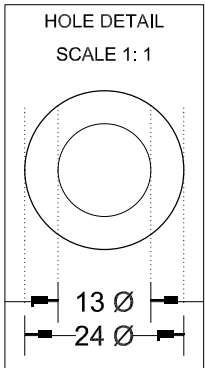
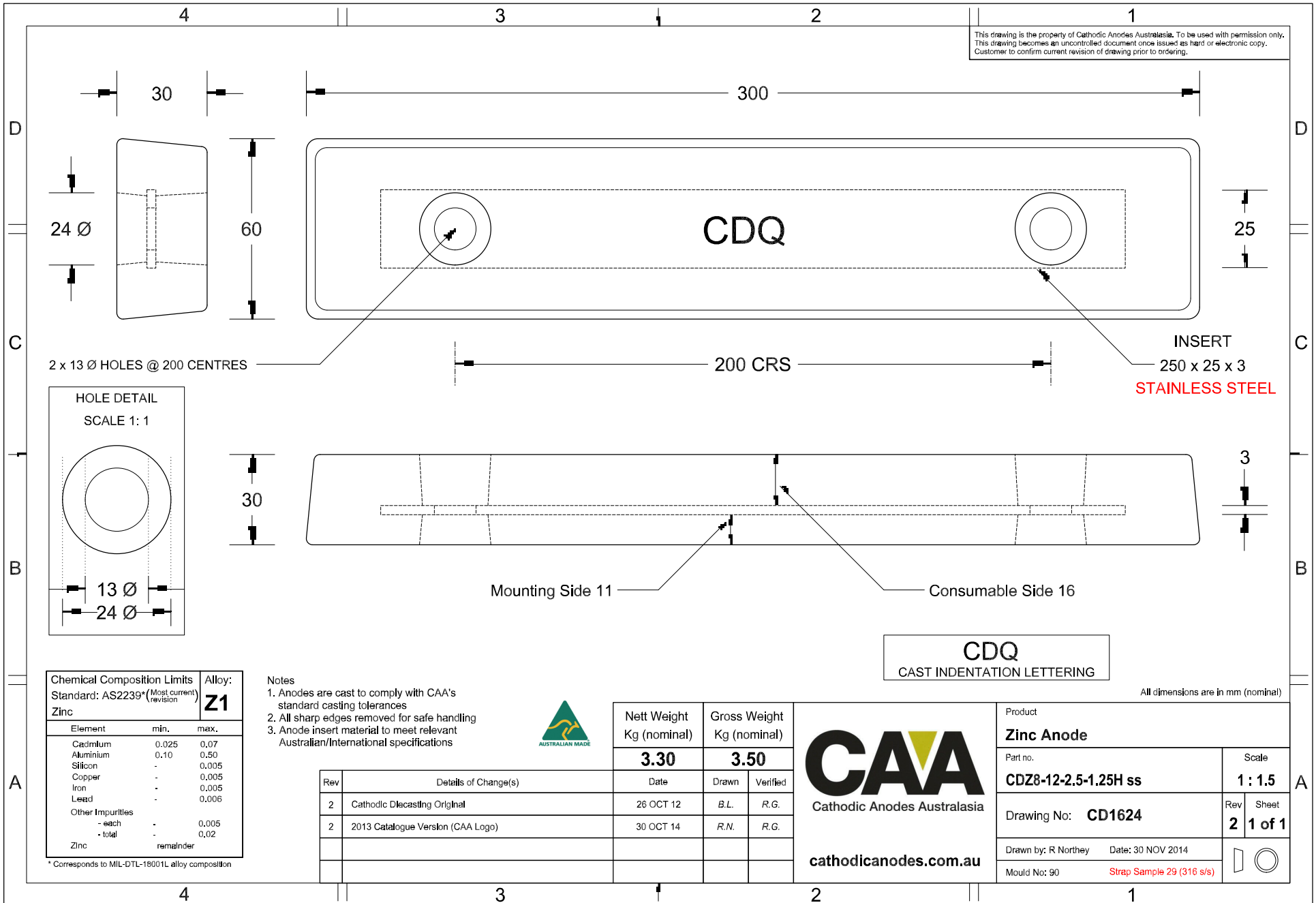


This drawing is the property of Cathodic Anodes Australasia. To be used with permission only.  
 This drawing becomes an uncontrolled document once issued as hard or electronic copy.  
 Customer to confirm current revision of drawing prior to ordering.



Chemical Composition Limits		Alloy:
Standard: AS2239* (Most current revision)		<b>Z1</b>
Element	min.	max.
Zinc		
Cadmium	0.025	0.07
Aluminium	0.10	0.50
Silicon	-	0.005
Copper	-	0.005
Iron	-	0.005
Lead	-	0.006
Other Impurities		
- each	-	0.005
- total	-	0.02
Zinc	remainder	

\* Corresponds to MIL-DTL-18001L alloy composition

- Notes
1. Anodes are cast to comply with CAA's standard casting tolerances
  2. All sharp edges removed for safe handling
  3. Anode insert material to meet relevant Australian/International specifications



Rev	Details of Change(s)	Date	Drawn	Verified
2	Cathodic Diecasting Original	26 OCT 12	B.L.	R.G.
2	2013 Catalogue Version (CAA Logo)	30 OCT 14	R.N.	R.G.

Nett Weight	Gross Weight
Kg (nominal)	Kg (nominal)
<b>3.30</b>	<b>3.50</b>

**CAA**  
 Cathodic Anodes Australasia  
 cathodicanodes.com.au

**CDQ**  
 CAST INDENTATION LETTERING

All dimensions are in mm (nominal)

Product		<b>Zinc Anode</b>	
Part no.	<b>CDZ8-12-2.5-1.25H ss</b>	Scale	<b>1 : 1.5</b>
Drawing No:	<b>CD1624</b>	Rev	<b>2</b>
		Sheet	<b>1 of 1</b>
Drawn by: R Northey	Date: 30 NOV 2014		
Mould No: 90	Strap Sample 29 (316 s/s)		