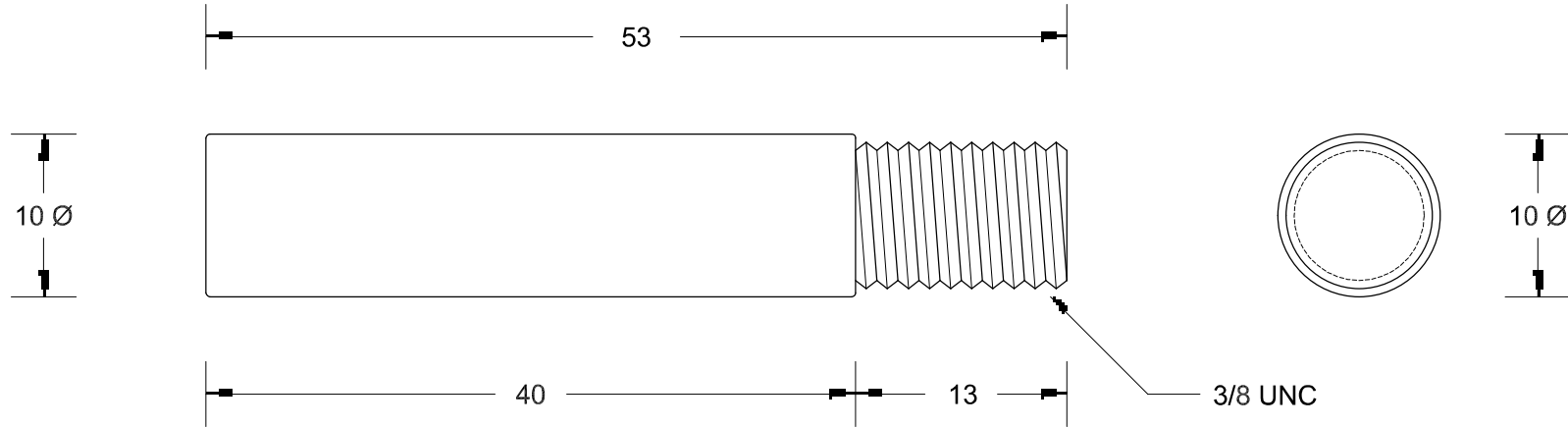


This drawing is the property of Cathodic Anodes Australasia. To be used with permission only. This drawing becomes an uncontrolled document once issued as hard or electronic copy. Customer to confirm current revision of drawing prior to ordering.

NO SHARP EDGES



Component Cut-Down from Part No: CDZ9-010 - Hence No Undercut Shoulder

Pressure Die-Cast Component

All dimensions are in mm (nominal)

Chemical Composition Limits			Alloy: Z1
Standard: AS2239* (Most current revision)			
Zinc			
Element	min.	max.	
Cadmium	0.025	0.07	
Aluminium	0.10	0.50	
Silicon	-	0.005	
Copper	-	0.005	
Iron	-	0.005	
Lead	-	0.006	
Other Impurities			
- each	-	0.005	
- total	-	0.02	
Zinc		remainder	

* Corresponds to MIL-DTL-18001L alloy composition

Notes

1. Anodes are cast to comply with CAA's standard casting tolerances
2. All sharp edges removed for safe handling
3. Anode insert material to meet relevant Australian/International specifications



Rev	Details of Change(s)	Date	Nett Weight		Gross Weight	
			Kg (nominal)		Kg (nominal)	
			0.020		N/A	
1	Cathodic Diecasting Original	14 April 2011		B.L.	R.G.	
2	2013 Catalogue Version (CAA Logo)	15 January 2014		R.N.	R.G.	



Product Zinc Anode		Scale 2.5 : 1	
Part no. CDZ9-157		Rev 2	Sheet 1 of 1
Drawing No: CD1500			
Drawn by: R Northey Date: 15 JAN 2014			