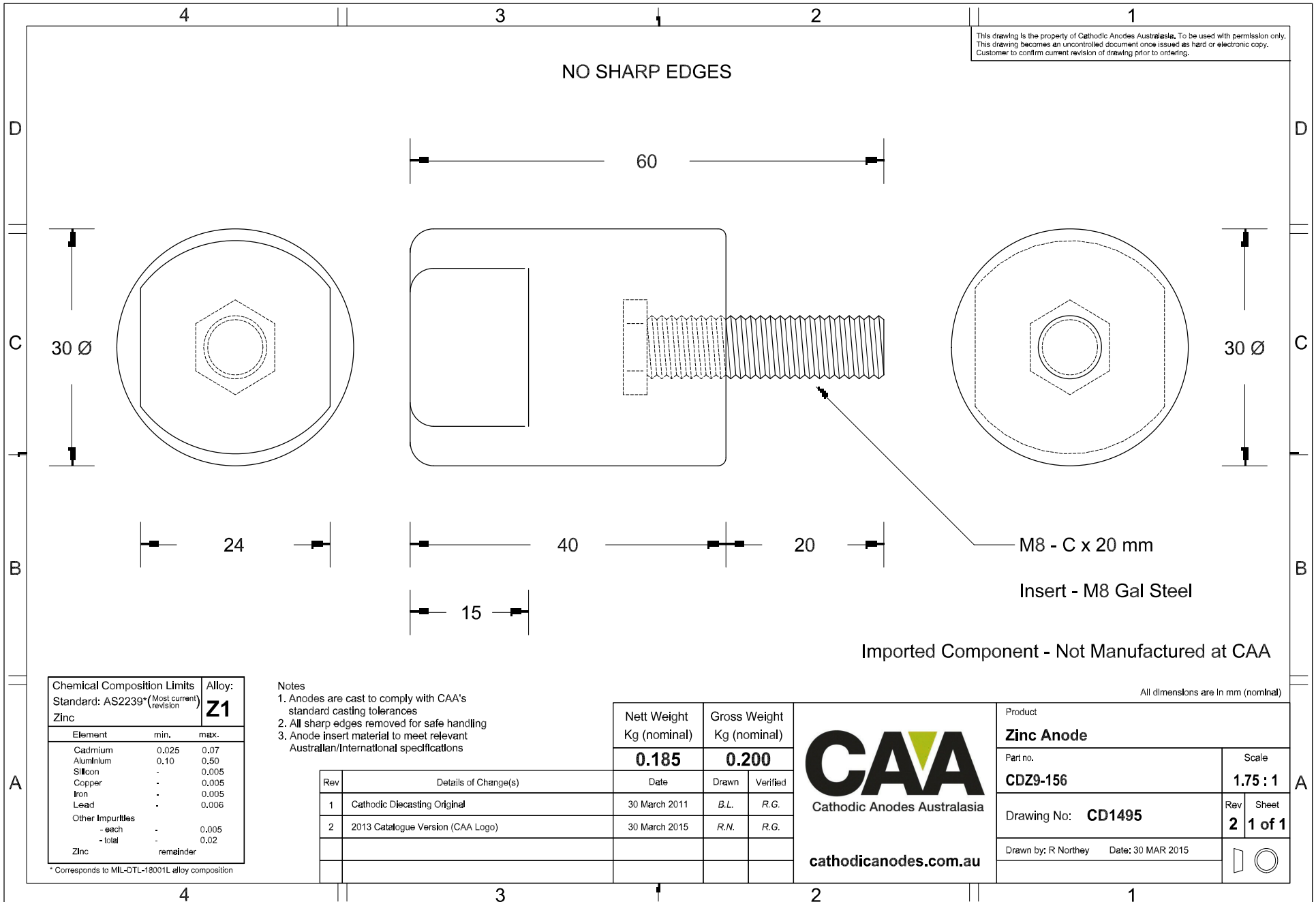


This drawing is the property of Cathodic Anodes Australasia. To be used with permission only. This drawing becomes an uncontrolled document once issued as hard or electronic copy. Customer to confirm current revision of drawing prior to ordering.

NO SHARP EDGES



Imported Component - Not Manufactured at CAA

All dimensions are in mm (nominal)

Chemical Composition Limits			Alloy: Z1
Standard: AS2239* (Most current revision)			
Element	min.	max.	
Zinc			
Cadmium	0.025	0.07	
Aluminium	0.10	0.50	
Silicon	-	0.005	
Copper	-	0.005	
Iron	-	0.005	
Lead	-	0.006	
Other Impurities			
- each	-	0.005	
- total	-	0.02	
Zinc		remainder	

* Corresponds to MIL-DTL-18001L alloy composition

Notes

1. Anodes are cast to comply with CAA's standard casting tolerances
2. All sharp edges removed for safe handling
3. Anode insert material to meet relevant Australian/International specifications

Rev	Details of Change(s)	Date	Drawn	Verified
1	Cathodic Diecasting Original	30 March 2011	B.L.	R.G.
2	2013 Catalogue Version (CAA Logo)	30 March 2015	R.N.	R.G.

Nett Weight Kg (nominal)	Gross Weight Kg (nominal)
0.185	0.200

CAA
Cathodic Anodes Australasia
cathodicanodes.com.au

Product Zinc Anode	
Part no. CDZ9-156	Scale 1.75 : 1
Drawing No: CD1495	Rev Sheet 2 1 of 1
Drawn by: R Northey Date: 30 MAR 2015	