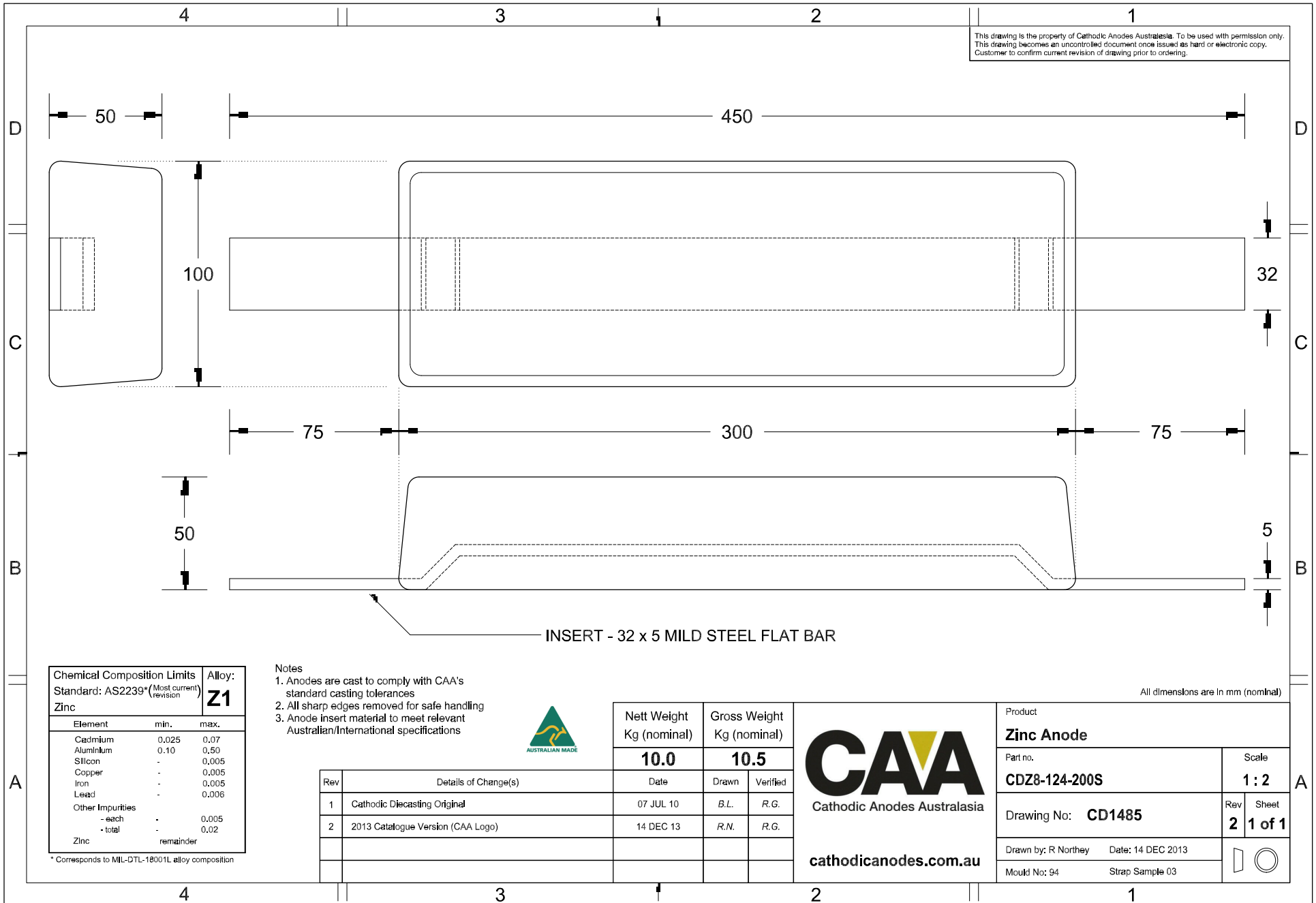


This drawing is the property of Cathodic Anodes Australasia. To be used with permission only.
 This drawing becomes an uncontrolled document once issued as hard or electronic copy.
 Customer to confirm current revision of drawing prior to ordering.



INSERT - 32 x 5 MILD STEEL FLAT BAR

Chemical Composition Limits		Alloy:	
Standard: AS2239* (Most current revision)		Z1	
Element	min.	max.	
Cadmium	0.025	0.07	
Aluminium	0.10	0.50	
Silicon	-	0.005	
Copper	-	0.005	
Iron	-	0.005	
Lead	-	0.006	
Other Impurities			
- each	-	0.005	
- total	-	0.02	
Zinc		remainder	

* Corresponds to MIL-DTL-18001L alloy composition


Notes

1. Anodes are cast to comply with CAA's standard casting tolerances
2. All sharp edges removed for safe handling
3. Anode insert material to meet relevant Australian/International specifications



Rev	Details of Change(s)	Date	Drawn	Verified
1	Cathodic Diecasting Original	07 JUL 10	B.L.	R.G.
2	2013 Catalogue Version (CAA Logo)	14 DEC 13	R.N.	R.G.


Cathodic Anodes Australasia
cathodicanodes.com.au

Product		Zinc Anode	
Part no.	CDZ8-124-200S	Scale	1 : 2
Drawing No:	CD1485	Rev	2
		Sheet	1 of 1
Drawn by: R Northey	Date: 14 DEC 2013		
Mould No: 94	Strap Sample 03		

All dimensions are in mm (nominal)