

This drawing is the property of Cathodic Anodes Australasia. To be used with permission only. This drawing becomes an uncontrolled document once issued as hard or electronic copy. Customer to confirm current revision of drawing prior to ordering.

**DO NOT PAINT**  
CAST INDENTATION LETTERING

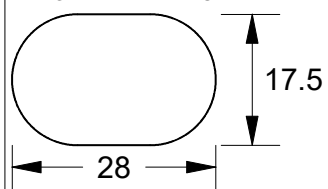
2 x (17.5 Ø X 28)  
SLOTTED HOLES  
@ 150 CENTRES

DO NOT

PAINT

INSERT  
210 x 50 x 3  
MILD STEEL FLAT

HOLE DETAIL - SCALE 1 : 1



Chemical Composition Limits			Alloy: <b>Z1</b>
Element	min.	max.	
Standard: AS2239* (Most current revision)			
Zinc			
Cadmium	0.025	0.07	
Aluminium	0.10	0.50	
Silicon	-	0.005	
Copper	-	0.005	
Iron	-	0.005	
Lead	-	0.006	
Other Impurities			
- each	-	0.005	
- total	-	0.02	
Zinc	remainder		

\* Corresponds to MIL-DTL-18001L alloy composition

**Notes**

- Anodes are cast to comply with CAA's standard casting tolerances
- All sharp edges removed for safe handling
- Anode insert material to meet relevant Australian/International specifications



Casting: Use CDZ2-84-1.25H Top and Bottom Spigots

All dimensions are in mm (nominal)

Rev	Details of Change(s)	Date	Casting: Use CDZ2-84-1.25H Top and Bottom Spigots	
			Nett Weight Kg (nominal)	Gross Weight Kg (nominal)
			<b>9.20</b>	<b>9.50</b>
1	Cathodic Diecasting Original	07 MAR 11	B.L.	R.G.
2	2013 Catalogue Version (CAA Logo)	23 DEC 13	R.N.	R.G.



Cathodic Anodes Australasia

[cathodicanodes.com.au](http://cathodicanodes.com.au)

Product <b>Zinc Anode</b>			
Part no. <b>CDZ8-126-1.25H ZP</b>	Scale <b>1 : 2</b>		
Drawing No: <b>CD1483</b>	Rev <b>2</b>	Sheet <b>1 of 1</b>	
Drawn by: R Northey	Date: 23 DEC 2013		
Mould No: N/A	Strap Sample: 13		

