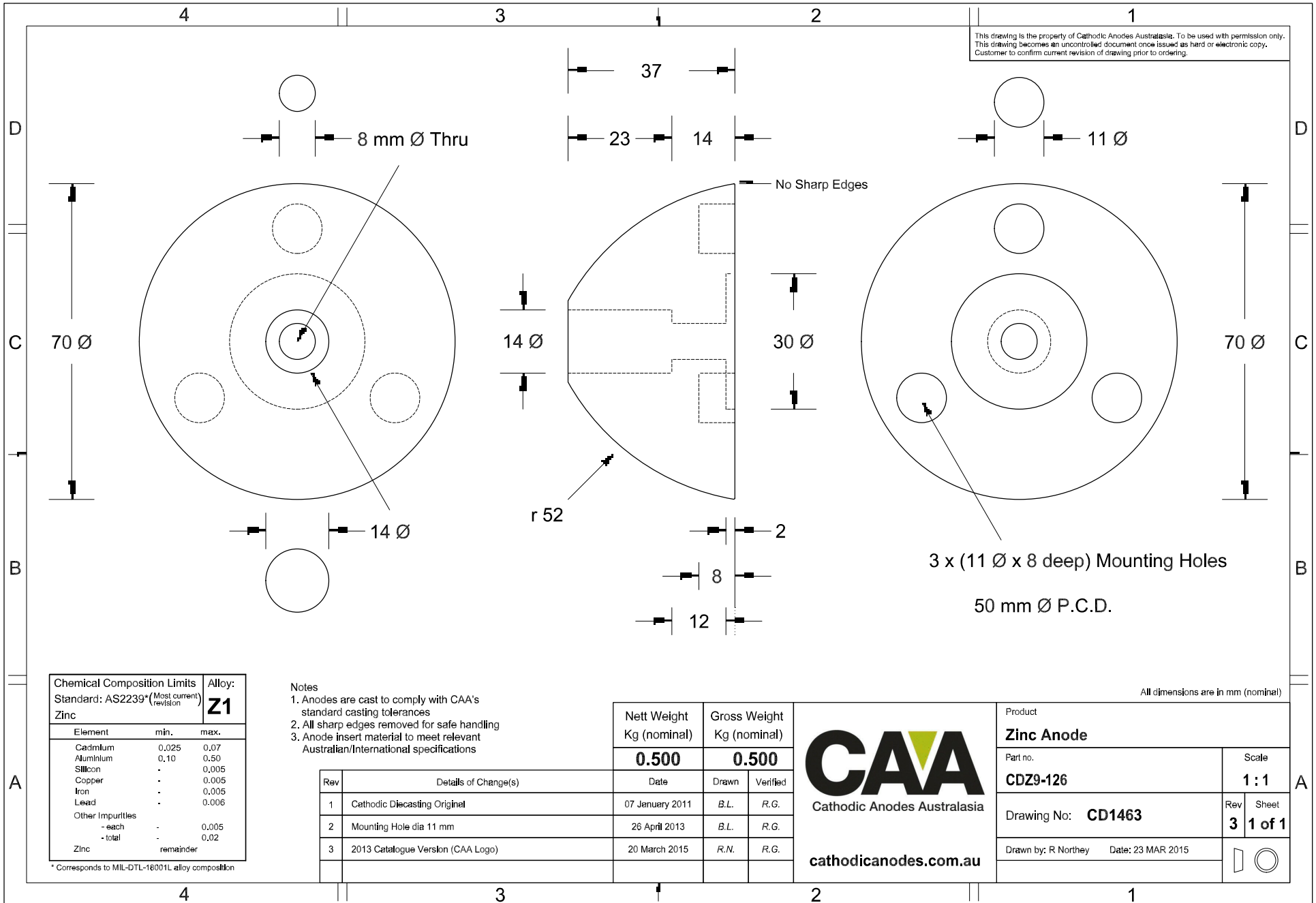


This drawing is the property of Cathodic Anodes Australasia. To be used with permission only. This drawing becomes an uncontrolled document once issued as hard or electronic copy. Customer to confirm current revision of drawing prior to ordering.



Chemical Composition Limits		Alloy: Z1
Standard: AS2239* (Most current revision)		
Element	min.	max.
Cadmium	0.025	0.07
Aluminium	0.10	0.50
Silicon	-	0.005
Copper	-	0.005
Iron	-	0.005
Lead	-	0.006
Other Impurities		
- each	-	0.005
- total	-	0.02
Zinc	remainder	

* Corresponds to MIL-DTL-18001L alloy composition

Notes

1. Anodes are cast to comply with CAA's standard casting tolerances
2. All sharp edges removed for safe handling
3. Anode insert material to meet relevant Australian/International specifications

Rev	Details of Change(s)	Date	Drawn	Verified
1	Cathodic Diecasting Original	07 January 2011	B.L.	R.G.
2	Mounting Hole dia 11 mm	26 April 2013	B.L.	R.G.
3	2013 Catalogue Version (CAA Logo)	20 March 2015	R.N.	R.G.

Nett Weight Kg (nominal)	Gross Weight Kg (nominal)
0.500	0.500



Product Zinc Anode		Scale 1 : 1	
Part no. CDZ9-126	Drawing No: CD1463		Rev Sheet 3 1 of 1
Drawn by: R Northey Date: 23 MAR 2015			

All dimensions are in mm (nominal)